

WAAS CH 72925 W04A	APP CRS 035°	Rwy Idg TDZE 2380 Apt Elev 2380
--	------------------------	---

RNAV (GPS) RWY 4

AVENGER FIELD (SWW)

⚠ Baro-VNAV NA when using Snyder altimeter setting. For uncompensated Baro-VNAV systems, LNAV/VNAV NA below -19°C (-2°F) or above 29°C (84°F). DME/DME RNP-0.3 NA. Visibility reduction by helicopters NA. When local altimeter setting not received, use Snyder altimeter setting and increase all DA 72 feet and all MDA 80 feet. Increase LPV visibility all Cats ½ mile. Increase LNAV/VNAV visibility all Cats ¼ mile and LNAV visibility Cats C and D ½ mile. When VGSI inop, Straight-in/Circling Rwy 4 procedure NA at night. When VGSI inop, Circling Rwy 17 and 22 NA at night.

MISSED APPROACH:
Climb to 4400 direct AWBIR and hold.

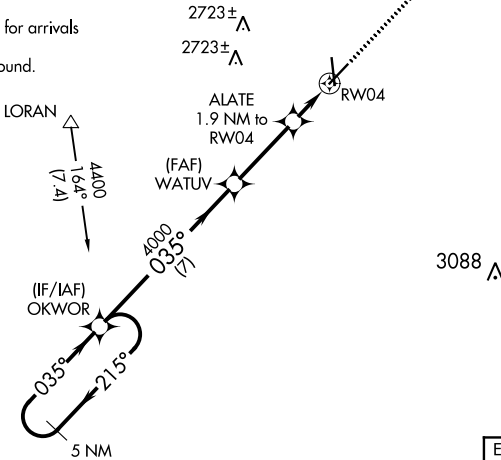
AWOS-3
119.025

ABILENE APP CON
127.2 282.3

UNICOM
122.8 (CTAF)

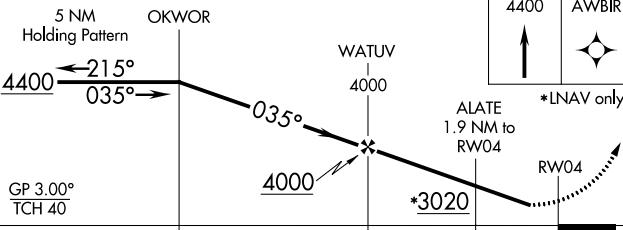


Procedure NA for arrivals at LORAN on V16 westbound.

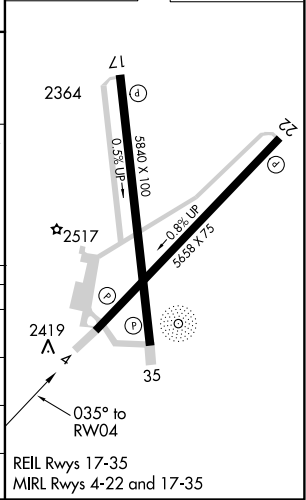


SC-2: 26 APR 2018 to 24 MAY 2018

SC-2: 26 APR 2018 to 24 MAY 2018



ELEV 2380	TDZE 2380
-----------	-----------



CATEGORY	A	B	C	D
LPV DA	2630-1 250 (300-1)			
LNAV/VNAV DA	2727-1 1/8 347 (400-1 1/8)			
LNAV MDA	2820-1 440 (500-1)	2820-1 1/4 440 (500-1 1/4)		
CIRCLING	2880-1 500 (500-1)	2880-1 1/2 500 (500-1 1/2)	2940-2 560 (600-2)	