

WAAS CH 78225 W35A	APP CRS 346°	Rwy Idg TDZE Apt Elev	5840 2355 2380
--	------------------------	-----------------------------	---

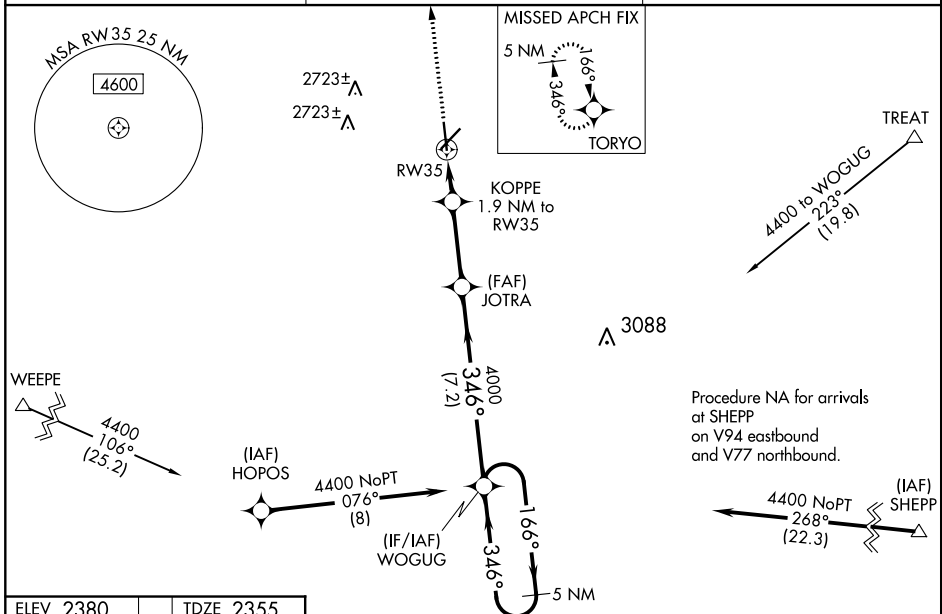
RNAV (GPS) RWY 35

AVENGER FIELD (SWW)

▼ When VGSI inop, Circling Rwy 17 and 22 NA at night. Baro-VNAV NA when using Snyder altimeter setting. For uncompensated Baro-VNAV systems, LNAV/VNAV NA below -19°C (-2°F) or above 29°C (84°F). When VGSI inop, Straight-in/Circling Rwy 35 NA at night.
▲ DME/DME RNP-0.3 NA. Visibility reduction by helicopters NA. When local altimeter setting is not received, use Snyder altimeter setting and increase all DA 72 feet and all MDA 80 feet. Increase LNAV/VNAV visibility all Cats ¼ mile and LNAV visibility Cats C and D ½ mile.

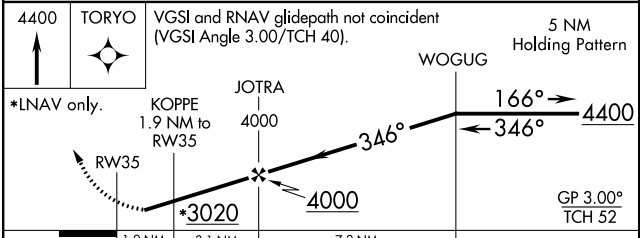
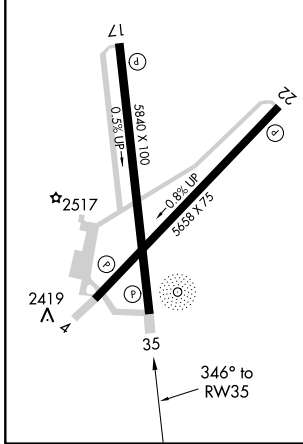
MISSED APPROACH:
Climb to 4400 direct TORYO and hold.

AWOS-3 119.025	ABILENE APP CON 127.2 282.3	UNICOM 122.8 (CTAF)
--------------------------	---------------------------------------	-------------------------------



ELEV 2380	TDZE 2355
-----------	-----------

REIL Rwy 17-35
MIRL Rwy 4-22 and 17-35



CATEGORY	A	B	C	D
LPV DA		2605-1	250 (300-1)	
LNAV/VNAV DA		2713-1½	358 (400-1½)	
LNAV MDA	2820-1	465 (500-1)	2820-1⅔	465 (500-1⅔)
CIRCLING	2880-1	500 (500-1)	2880-1½ 500 (500-1½)	2940-2 560 (600-2)

SC-2: 26 APR 2018 to 24 MAY 2018

SC-2: 26 APR 2018 to 24 MAY 2018