

WAAS CH 49125 W22A	APP CRS 215°	Rwy Idg TDZE Apt Elev	5658 2355 2380
--	------------------------	-----------------------------	---

RNAV (GPS) RWY 22

AVENGER FIELD (SWW)

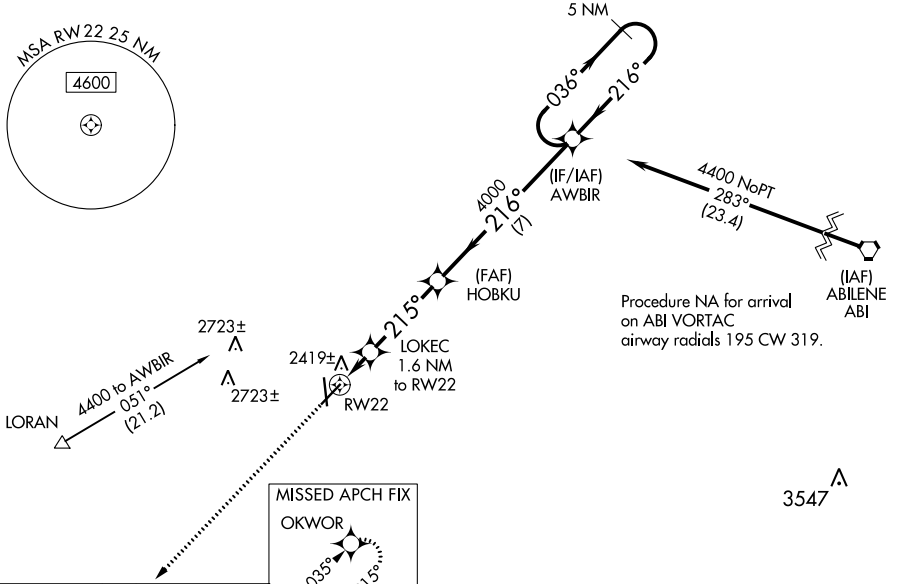
⚠ When VGSI inop, Circling Rwy 17 and 22 NA at night. Baro-VNAV NA when using Snyder altimeter setting. For uncompensated Baro-VNAV systems, LNAV/VNAV NA below -19°C (-2°F) or above 29°C (84°F). When VGSI inop, Straight in/Circling Rwy 22 procedure NA at night. DME/DME RNP-0.3 NA. Visibility reduction by helicopters NA. When local altimeter setting not received, use Snyder altimeter setting and increase all DA 72 feet and all MDA 80 feet. Increase LPV and LNAV/VNAV all Cats visibility 1/8 mile. Increase LNAV Cats C and D visibility 1/4 mile.

MISSED APPROACH:
Climb to 4400 direct OKWOR and hold.

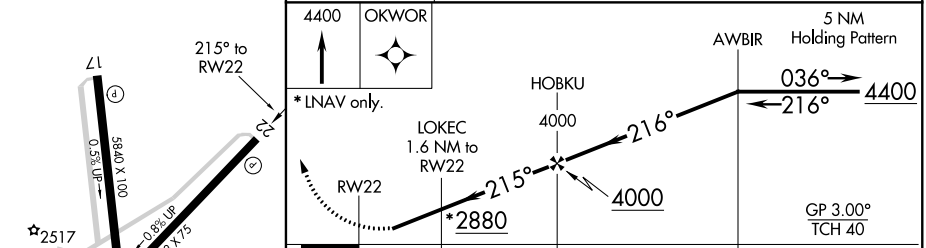
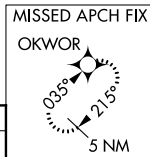
AWOS-3
119.025

ABILENE APP CON
127.2 282.3

UNICOM
122.8 (CTAF)



ELEV 2380	TDZE 2355
-----------	-----------



CATEGORY	A	B	C	D
LPV DA		2605-1	250 (300-1)	
LNAV/VNAV DA		2605-1	250 (300-1)	
LNAV MDA		2680-1	325 (300-1)	
CIRCLING	2880-1	500 (500-1)	2880-1½ 500 (500-1½)	2940-2 560 (600-2)

REIL Rwy 17-35
MIRL Rwy 4-22 and 17-35

SC-2: 26 APR 2018 to 24 MAY 2018

SC-2: 26 APR 2018 to 24 MAY 2018