

WAAS CH 93534 W27A	APP CRS 274°	Rwy Idg TDZE Apt Elev	5648 786 808
--	------------------------	-----------------------------	---

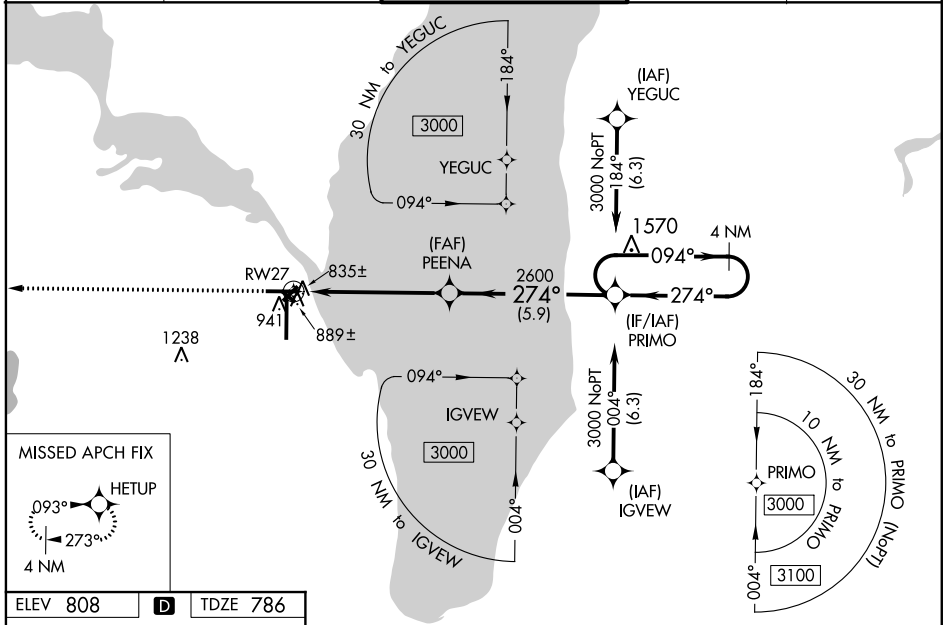
RNAV (GPS) RWY 27

WITTMAN RGNL (OSH)

⚠ For uncompensated Baro-VNAV systems, LNAV/VNAV NA below -20°C (-4°F) or above 54°C (130°F). DME/DME RNP-0.3 NA. When local altimeter setting not received, use Fond Du Lac altimeter setting and increase all DA 31 feet and all MDA 40 feet; increase LPV and LNAV/VNAV all Cats visibility and LNAV Cats C and D visibility 1/8 mile, increase Circling Cat D 1/4 mile. Baro-VNAV and VDP NA with Fond Du Lac altimeter setting. Circling to Rwy 5, 23, and 31 NA at night. Helicopter visibility reduction below 3/4 SM NA.

MISSED APPROACH:
Climb to 3000 direct HETUP and hold.

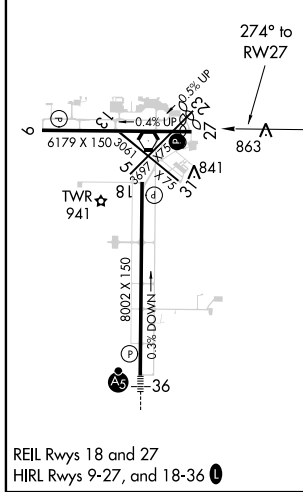
ATIS 125.9	MILWAUKEE APP CON 127.0 263.075	OSHKOSH TOWER ★ 118.5 (CTAF) 0 290.9	GND CON 132.3	UNICOM 122.95
----------------------	---	--	-------------------------	-------------------------



EC-3, 26 APR 2018 to 24 MAY 2018

EC-3, 26 APR 2018 to 24 MAY 2018

ELEV 808	D	TDZE 786
-----------------	----------	-----------------



OSHKOSH, WISCONSIN
Amdt 1A 02APR15

43°59'N-88°33'W

WITTMAN RGNL (OSH) RNAV (GPS) RWY 27