

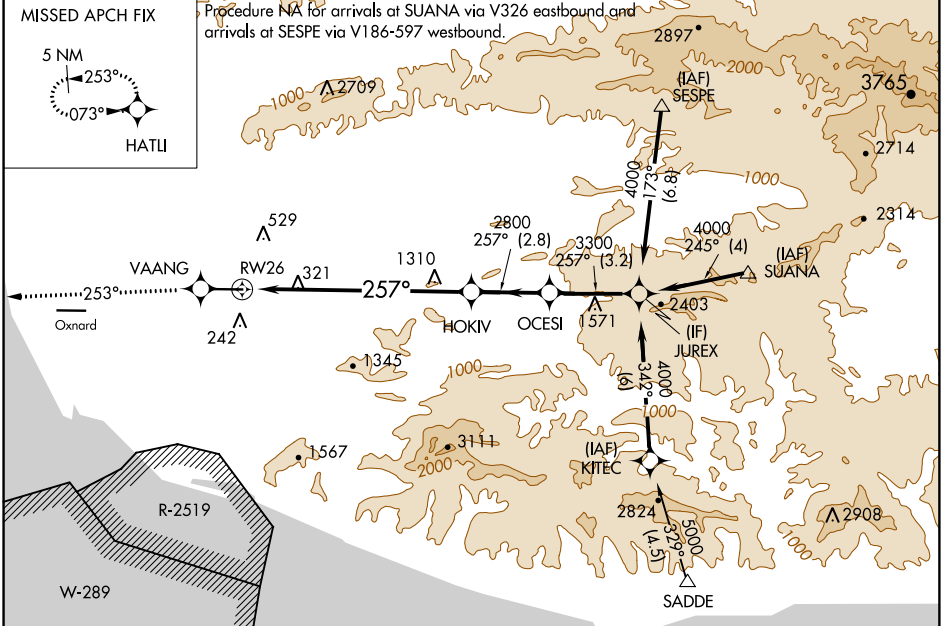
WAAS CH <b>58202</b> <b>W26A</b>	APP CRS <b>257°</b>	Rwy Idg TDZE Apt Elev	<b>6013</b> <b>77</b> <b>77</b>
--	------------------------	-----------------------------	---------------------------------------

# RNAV (GPS) Z RWY 26

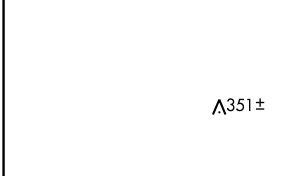
CAMARILLO (CMA)

**V** DME/DME RNP -0.3 NA.  
**▲NA** If local altimeter setting not received, use Oxnard altimeter setting and increase DA 18 feet.  
**W** MISSED APPROACH: Climb to 3000 direct VAANG and via 253° track to HATLI and hold.

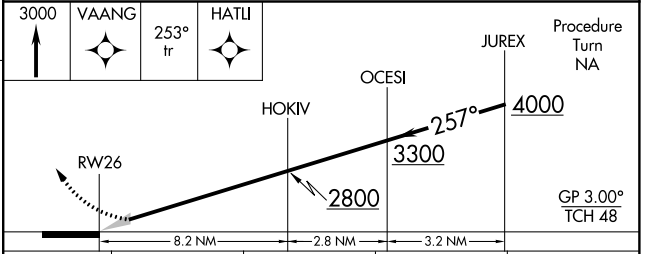
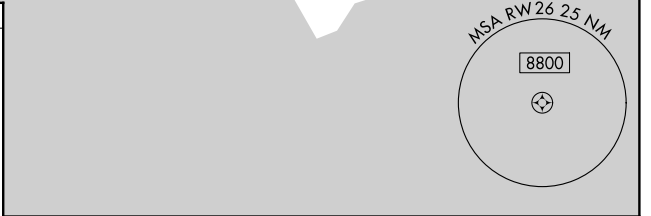
ATIS <b>126.025</b>	POINT MUGU APP CON * <b>124.7 335.5</b>	CAMARILLO TOWER * <b>128.2 (CTAF) 0 269.4</b>	GND CON <b>121.8</b>	CLNC DEL <b>121.8</b>	POINT MUGU CLNC DEL <b>120.75 279.55</b>	UNICOM <b>122.95</b>
------------------------	--	--	-------------------------	--------------------------	---	-------------------------



ELEV 77	TDZE 77
---------	---------



REIL Rwy 8 and 26  
 MIRL Rwy 8-26



CATEGORY	A	B	C	D
LPV DA		327-3/4	250 (300-3/4)	

SW-3, 26 APR 2018 to 24 MAY 2018

SW-3, 26 APR 2018 to 24 MAY 2018