

VOR/DME GDM 110.6 Chan 43	APP CRS 347°	Rwy Idg TDZE Apt Elev	5000 998 1009
-----------------------------------------------	------------------------	-----------------------------	------------------------------------------

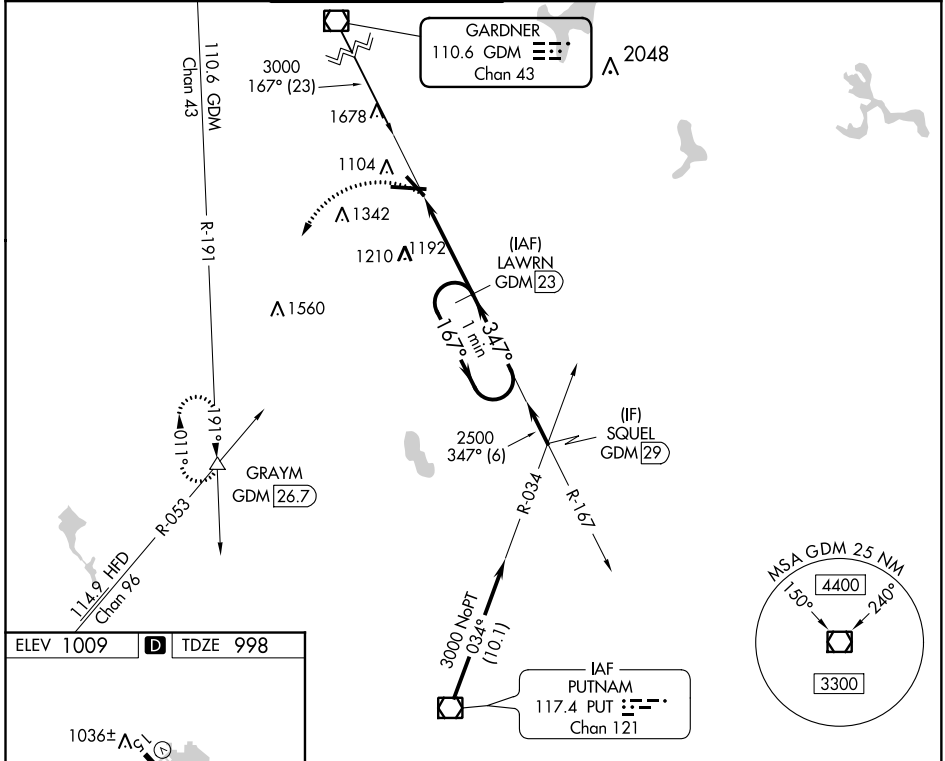
VOR/DME RWY 33

WORCESTER RGNL (ORH)

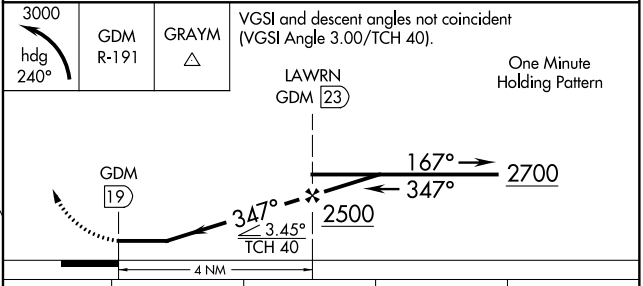
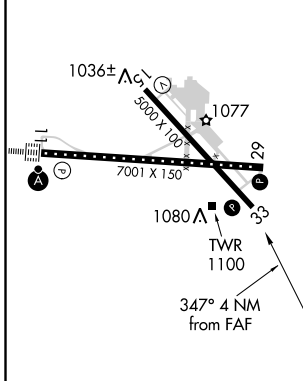
▼ When VGSi inop, Straight-in/Circling Rwy 33 procedure NA at night. Visibility reduction by helicopters NA. When local altimeter setting not received, use
 ▲ Bedford altimeter setting and increase all MDA 200 feet; increase S-33 Cat C/D visibility ½ mile and Circling Cat C visibility ¾ mile.

MISSED APPROACH: Climbing left turn to 3000 on heading 240° and GDM VOR/DME R-191 to GRAYM INT/GDM 26.7 DME and hold.

ATIS 126.55	BRADLEY APP CON 119.0 327.1	WORCESTER TOWER★ 120.5 (CTAF) 263.0	GND CON 123.85	CLNC DEL 128.65 119.0 (when tower closed)	UNICOM 122.95
-----------------------	---------------------------------------	-----------------------------------------------	--------------------------	---------------------------------------------------------------	-------------------------



ELEV 1009	D	TDZE 998
-----------	----------	----------



CATEGORY	A	B	C	D
S-33	1520-1	522 (600-1)	1520-1½	522 (600-1½)
CIRCLING	1560-1 551 (600-1)	1640-1 631 (700-1)	1720-2 711 (800-2)	1980-3 971 (1000-3)

NE-1, 26 APR 2018 to 24 MAY 2018

NE-1, 26 APR 2018 to 24 MAY 2018