

APP CRS	Rwy Idg	5000
333°	TDZE	999
	Apt Elev	1009

RNAV (GPS) RWY 33

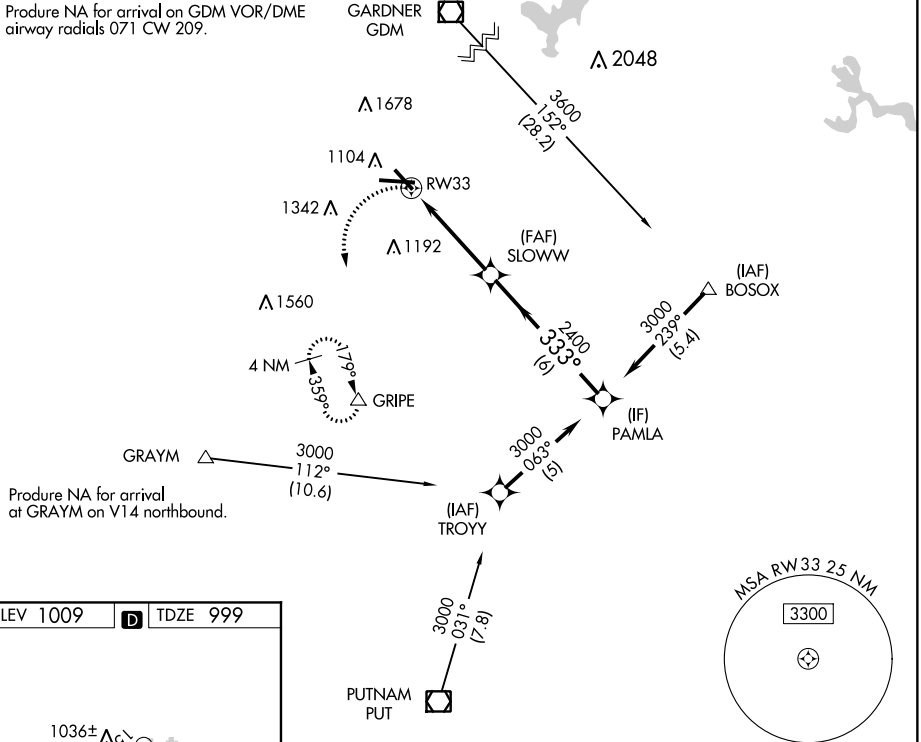
WORCESTER RGNL (ORH)

▼ DME/DME RNP-0.3 NA. When local altimeter setting not received, use Bedford altimeter setting and increase all MDA 200 feet, increase LNAV Cat C visibility ½ mile, and LNAV Cat D and Circling Cat C visibility ¾ mile. Increase Circling Cat B ¼ mile, and Cat D 1 mile. VDP NA with Bedford altimeter setting.

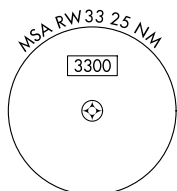
▲ MISSED APPROACH: Climbing left turn to 3000 direct GRIPE and hold.

ATIS	BRADLEY APP CON	WORCESTER TOWER★	GND CON	CLNC DEL	UNICOM
126.55	119.0 327.1	120.5 (CTAF) 263.0	123.85	128.65 119.0 (when tower closed)	122.95

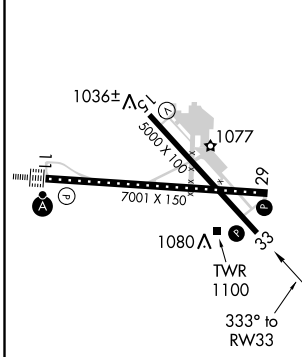
Produce NA for arrival on GDM VOR/DME airway radials 071 CW 209.



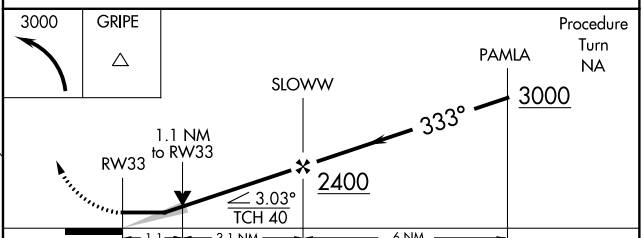
Produce NA for arrival at GRAYM on V14 northbound.



ELEV 1009	D	TDZE 999
-----------	----------	----------



TDZ/CL Rwy 11
 REIL Rws 15, 29 and 33
 HIRL Rwy 11-29
 MIRL Rwy 15-33



CATEGORY	A	B	C	D
LNAV MDA	1400-1	401 (400-1)	1400-1½	401 (400-1½)
CIRCLING	1560-1 551 (600-1)	1640-1 631 (700-1)	1720-2 711 (800-2)	2000-3 991 (1000-3)

NE-1, 26 APR 2018 to 24 MAY 2018

NE-1, 26 APR 2018 to 24 MAY 2018