

LOC/DME I-EKW <b>110.9</b> Chan 46	APP CRS <b>289°</b>	Rwy Idg TDZE Apt Elev	<b>7001</b> <b>990</b> <b>1009</b>
--	------------------------	-----------------------------	--

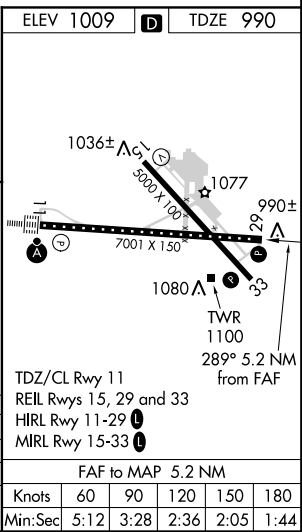
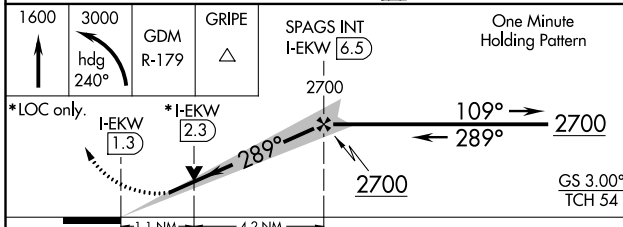
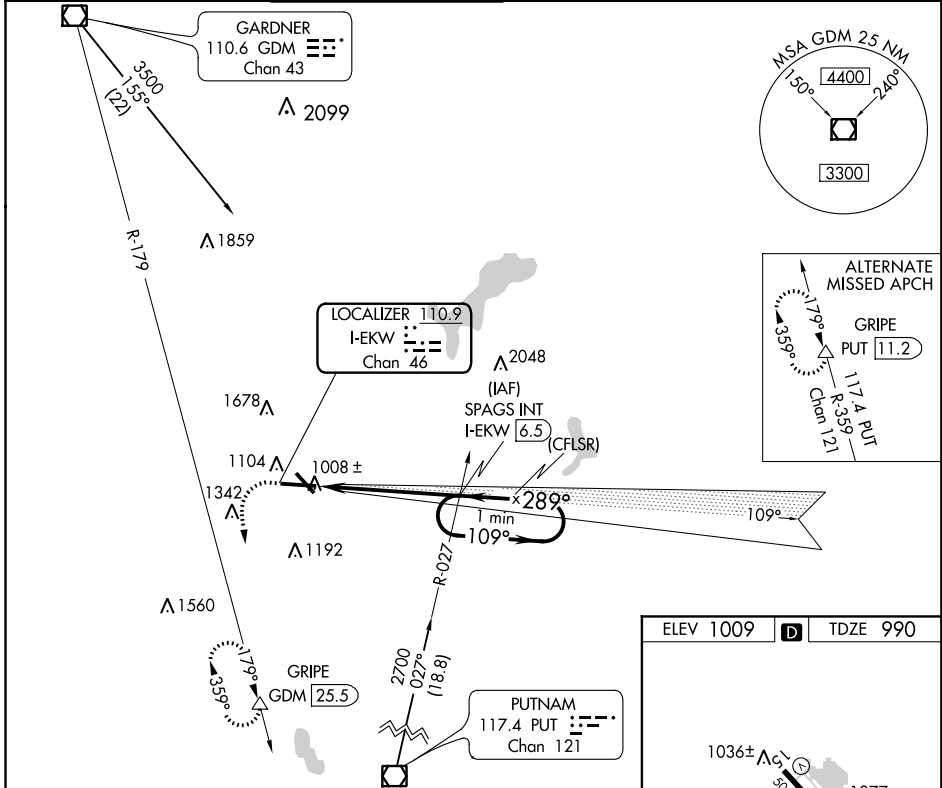
# ILS or LOC RWY 29

WORCESTER RGNL (ORH)

**⚠** DME required. VDP NA with Bedford altimeter setting. When local altimeter setting not received, use Bedford altimeter setting and increase all DA 189 feet and all MDA 200 feet; increase S-ILS 29 all Cats visibility to 1¼, increase S-LOC 29 Cats C/D visibility to 1¾, and Circling Cat B to 1¼, Cat C to 2¾. Autopilot coupled approach NA below 1266 feet.

**MISSED APPROACH:** Climb to 1600 then climbing left turn to 3000 on heading 240° and on GDM VOR/DME R-179 to GRIPE/GDM 25.5 DME and hold.

ATIS <b>126.55</b>	BRADLEY APP CON <b>119.0 327.1</b>	WORCESTER TOWER★ <b>120.5 (CTAF) 0 263.0</b>	GND CON <b>123.85</b>	CLNC DEL <b>128.65</b> <b>119.0</b> (when tower closed)	UNICOM <b>122.95</b>
-----------------------	---------------------------------------	---	--------------------------	---	-------------------------



CATEGORY	A	B	C	D
S-ILS 29		1190/40	200 (200-¾)	
S-LOC 29		1380/55	390 (400-1¼)	
CIRCLING	1560-1 551 (600-1)	1640-1 631 (700-1)	1720-2 711 (800-2)	1980-3 971 (1000-3)

NE-1, 26 APR 2018 to 24 MAY 2018

NE-1, 26 APR 2018 to 24 MAY 2018