


ILS or LOC RWY 11

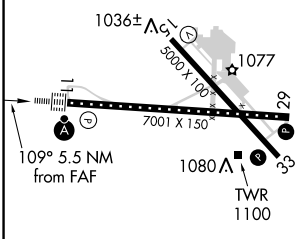
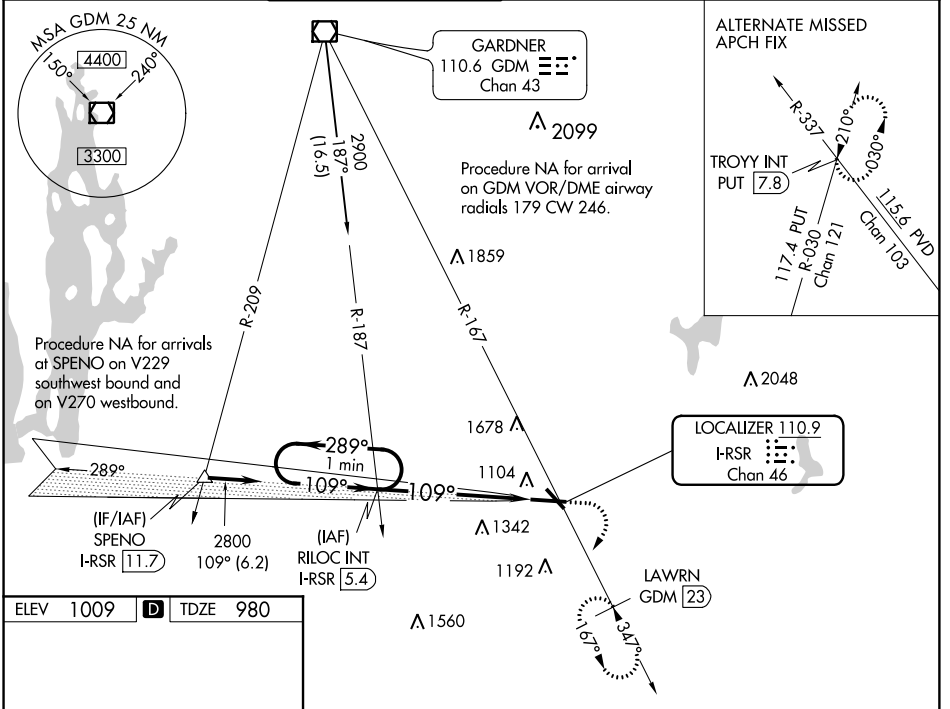
WORCESTER RGNL (ORH)

LOC/DME I-RSR 110.9 Chan 46	APP CRS 109°	Rwy ldg TDZE Apt Elev	7001 980 1009
---	------------------------	-----------------------------	--

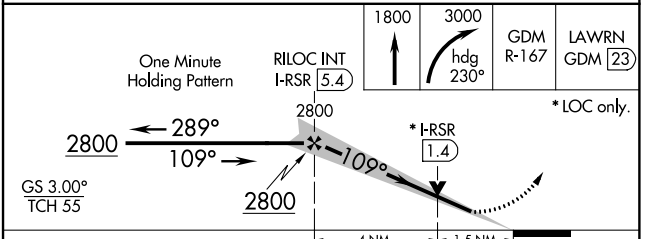
▼ DME required. For inop ALS, increase S-LOC 11 Cats C and D visibility to 1½ SM. When control tower closed: increase S-ILS 11 all Cats visibility to RVR 4000, and S-LOC 11 Cats A and B to RVR 4000 and Cats C and D to 1½ SM. When control tower closed: Inop table does not apply to S-ILS 11 all Cats. When control tower closed: for inop ALS, increase S-LOC 11 Cat C and D visibility to 1½ SM.

MALSR

MISSED APPROACH: Climb to 1800 then climbing right turn to 3000 on heading 230° and GDM VOR/DME R-167 to LAWWRN/GDM 23 DME and hold, continue climb-in-hold to 3000.

ATIS 126.55	BRADLEY APP CON 119.0 327.1	WORCESTER TOWER★ 120.5 (CTAF) 263.0	GND CON 123.85	CLNC DEL 128.65 119.0 (when tower closed)	UNICOM 122.95
-----------------------	---------------------------------------	---	--------------------------	---	-------------------------



ELEV	1009	D	TDZE	980	
TDZ/CL Rwy 11 REIL Rws 15, 29 and 33 HIRL Rwy 11-29 MIRL Rwy 15-33 FAF to MAP 5.5 NM					
Knots	60	90	120	150	180
Min:Sec	5:30	3:40	2:45	2:12	1:50



CATEGORY	A	B	C	D
S-ILS 11	1180/18		200 (200-½)	
S-LOC 11	1500/24	520 (500-½)	1500/55	520 (500-1¼)
C CIRCLING	1560-1 551 (600-1)	1720-1 711 (800-1)	2000-3	991 (1000-3)

NE-1, 26 APR 2018 to 24 MAY 2018

NE-1, 26 APR 2018 to 24 MAY 2018