

ZIAS4 FOUR DEPARTURE

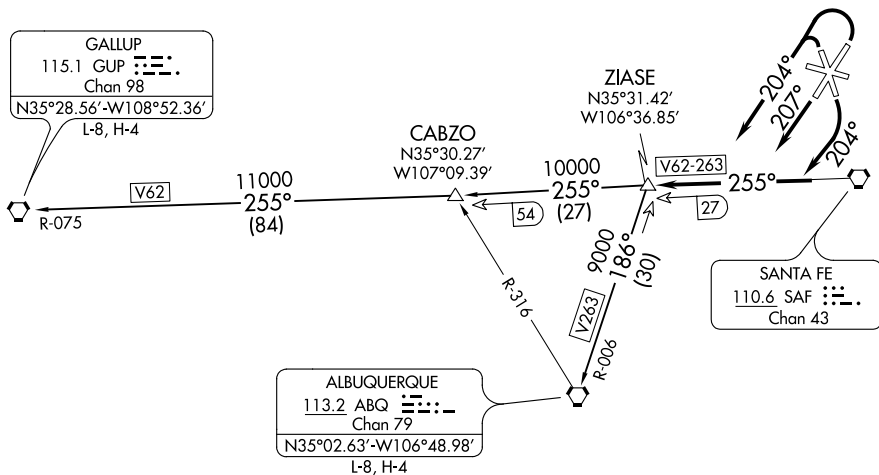
SL-548 (FAA)

SANTA FE MUNI (SAF)
SANTA FE, NEW MEXICO

ATIS 128.55
GND CON
121.7
SANTA FE TOWER*
119.5 (CTAF) 239.3
ALBUQUERQUE CENTER
132.8 346.35

CAUTION: Mountainous terrain all quadrants.

**TOP ALTITUDE:
ASSIGNED BY ATC**



TAKEOFF OBSTACLE NOTES

Rwy 15: Vegetation 75' from DER, 212' left of centerline, 15' AGL/6279' MSL.
Rwy 20: Tree 85' from DER, 354' left of centerline, 13' AGL/6276' MSL.
Rising terrain 231' from DER, 471' right of centerline, 6282' MSL

TAKEOFF MINIMUMS

Rwy 2: Standard with minimum climb of 235' per NM to 8200.
Rwy 33: Standard with minimum climb of 310' per NM to 8200.

NOTE: Chart not to scale.

DEPARTURE ROUTE DESCRIPTION

TAKEOFF RUNWAYS 2, 33: Climbing left turn heading 204° thence. . . .
TAKEOFF RUNWAY 15: Climbing right turn heading 204° thence. . . .
TAKEOFF RUNWAY 20: Climb heading 207° thence. . . .
. . . . intercept and proceed on SAF R-255 to ZIAS4 INT, then on (transition) or (assigned route).

ALBUQUERQUE TRANSITION (ZIAS4.ABQ): From over ZIAS4 INT on ABQ R-006 to ABQ VORTAC.

GALLUP TRANSITION (ZIAS4.GUP): From over ZIAS4 INT on SAF R-255 and GUP R-075 to GUP VORTAC.

ZIAS4 FOUR DEPARTURE

(ZIAS4.ZIASE) 27APR17

SANTA FE, NEW MEXICO
SANTA FE MUNI (SAF)

SW-1, 26 APR 2018 to 24 MAY 2018

SW-1, 26 APR 2018 to 24 MAY 2018