

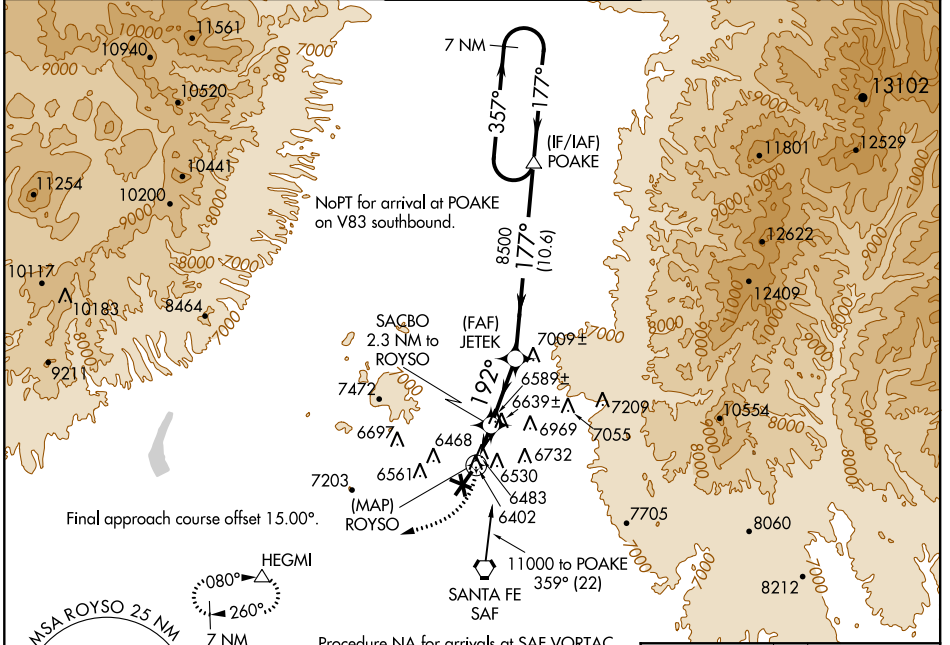
APP CRS	Rwy Idg	8366
192°	TDZE	6349
	Apt Elev	6349

RNAV (GPS) RWY 20

SANTA FE MUNI (SAF)

		DME/DME RNP-0.3 NA.	MISSED APPROACH: Climbing right turn to 9000 direct HEGMI and hold.		
--	--	---------------------	---	--	--

ATIS 128.55	ALBUQUERQUE CENTER 132.8 346.35	SANTA FE TOWER ★ 119.5 (CTAF) 239.3	GND CON 121.7	UNICOM 122.95
-----------------------	---	---	-------------------------	-------------------------



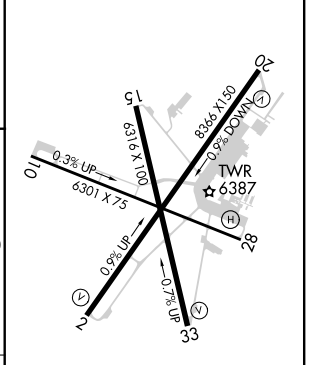
SW-1, 26 APR 2018 to 24 MAY 2018

SW-1, 26 APR 2018 to 24 MAY 2018

ELEV 6349	TDZE 6349
-----------	-----------



ELEV 6349	TDZE 6349
-----------	-----------



9000	HEGMI	POAKE	7 NM Holding Pattern
		SACBO 2.3 NM to ROYSO	JETEK
0.8 NM to ROYSO	ROYSO	3.00°	TCH 54
0.5	0.8	1.5	3.8 NM
		8500	10.6 NM

CATEGORY	A	B	C	D
LNVA MDA	6800-1	451 (500-1)	6800-1 $\frac{3}{8}$	451 (500-1 $\frac{3}{8}$)
CIRCLING	6800-1 451 (500-1)	6920-1 571 (600-1)	7340-3 991 (1000-3)	7660-3 1311 (1400-3)

REIL Rwy 10, 20 and 33
MIRL Rwy 2-20 and 15-33 ★
MIRL Rwy 10-28