

WAAS CH 63039 W02A	APP CRS 027°	Rwy Idg TDZE 6303 Apt Elev 6349
--	------------------------	---

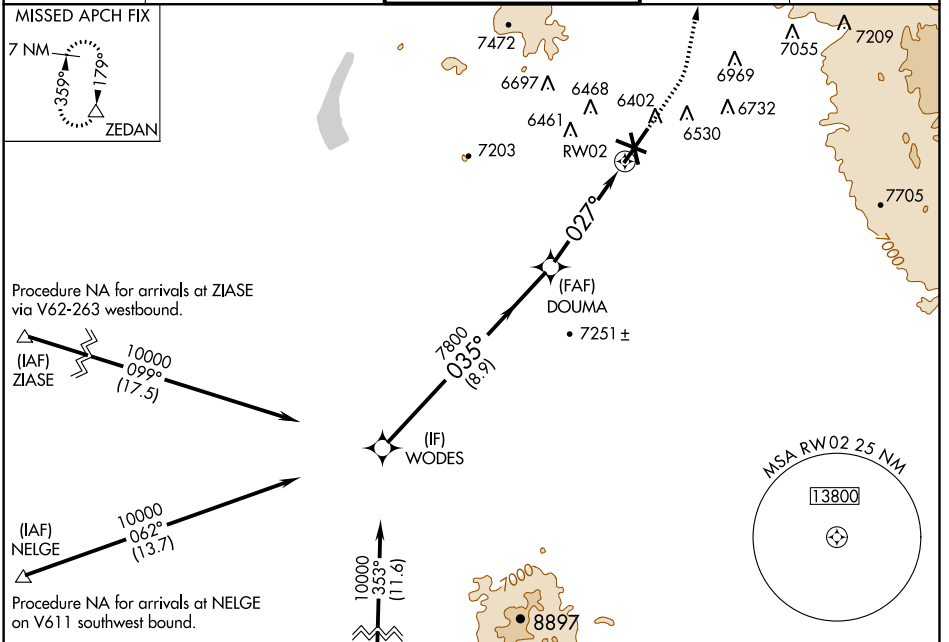
RNAV (GPS) RWY 2

SANTA FE MUNI (SAF)

▽ For uncompensated Baro-VNAV systems, LNAV/VNAV NA below -18°C (0°F) or above 45°C (113°F). DME/DME RNP-0.3 NA.

▲ MISSED APPROACH: Climb to 7300 then climbing left turn to 11000 direct ZEDAN and hold.

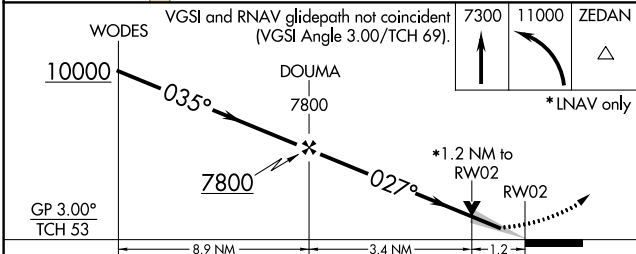
ATIS 128.55	ALBUQUERQUE CENTER 132.8 346.35	SANTA FE TOWER ★ 119.5 (CTAF) 239.3	GND CON 121.7	UNICOM 122.95
-----------------------	---	---	-------------------------	-------------------------



Procedure NA for arrivals at ZIASE via V62-263 westbound.

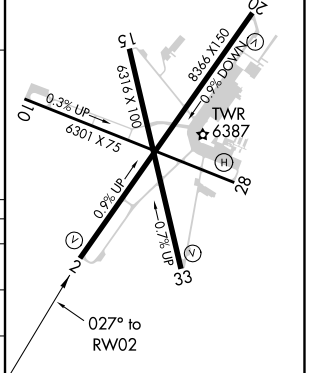
Procedure NA for arrivals at NELGE on V611 southwest bound.

Procedure NA for arrivals at DULKE on V190 southwest bound.



ELEV 6349	TDZE 6303
-----------	-----------

REIL Rwy 10, 20 and 33
MIRL Rwy 2-20 and 15-33 ★
MIRL Rwy 10-28



CATEGORY	A	B	C	D
LPV DA	6503-¾		200 (200-¾)	
LNAV/VNAV DA	6553-⅞		250 (300-⅞)	
LNAV MDA	6740-1 437 (400-1)		6740-1¼ 437 (400-1¼)	
CIRCLING	6800-1 451 (500-1)	6920-1 571 (600-1)	7340-3 991 (1000-3)	7660-3 1311 (1400-3)

SW-1, 26 APR 2018 to 24 MAY 2018

SW-1, 26 APR 2018 to 24 MAY 2018