

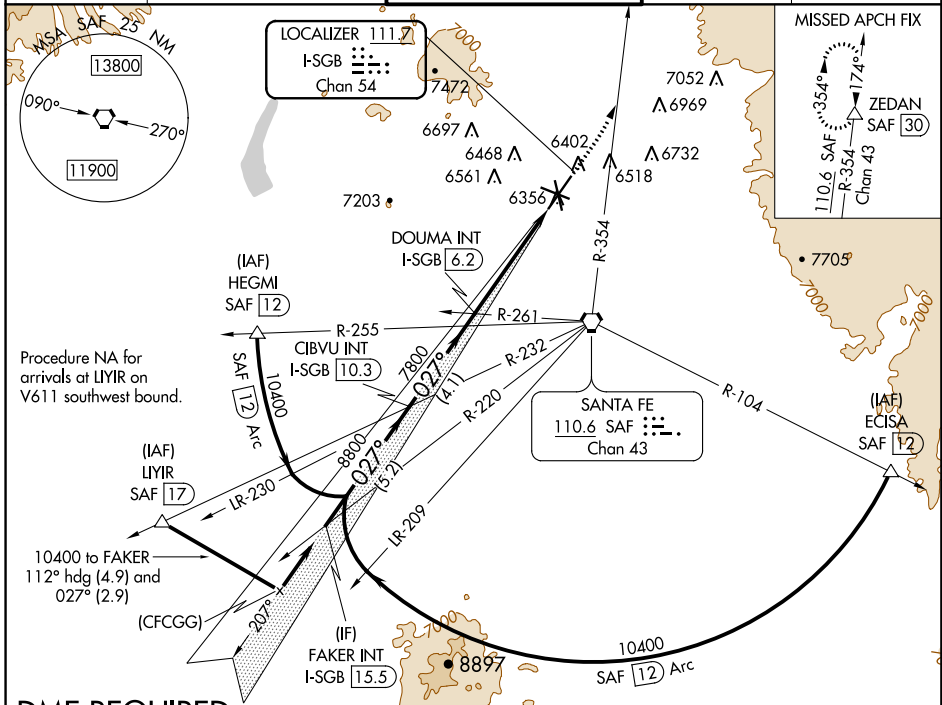
LOC/DME I-SGB 111.7 Chan 54	APP CRS 027°	Rwy Idg TDZE Apt Elev	8366 6303 6349
--	------------------------	-----------------------------	---

ILS or LOC RWY 2

SANTA FE MUNI (SAF)

DME required. MISSED APPROACH: Climb to 7300 then climbing left turn to 11000 on SAF VORTAC R-354 to ZEDAN/SAF 30 DME and hold.

ATIS 128.55	ALBUQUERQUE CENTER 132.8 346.35	SANTA FE TOWER ★ 119.5 (CTAF) 0 239.3	GND CON 121.7	UNICOM 122.95
-----------------------	---	---	-------------------------	-------------------------



SW-1, 26 APR 2018 to 24 MAY 2018

SW-1, 26 APR 2018 to 24 MAY 2018

DME REQUIRED

FAKER INT I-SGB [15.5]	CIBVU INT I-SGB [10.3]	DOUMA INT I-SGB [6.2]	7300	11000	ZEDAN
10400	8800	7800	↑	SAF R-354	△
GS 3.00° TCH 53					*LOC only
5.2 NM	4.1 NM	3.4 NM	1.2		
CATEGORY	A	B	C	D	
S-ILS 2	6503-¾		200 (200-¾)		
S-LOC 2	6740-1	437 (400-1)	6740-1¼	437 (400-1¼)	
CIRCLING	6800-1	6920-1	7340-3	7660-3	
	451 (500-1)	571 (600-1)	991 (1000-3)	1311 (1400-3)	

