

WAAS CH <b>72805</b> <b>W02A</b>	APP CRS <b>016°</b>	Rwy Idg TDZE Apt Elev	<b>6527</b> <b>1173</b> <b>1194</b>
--	------------------------	-----------------------------	---

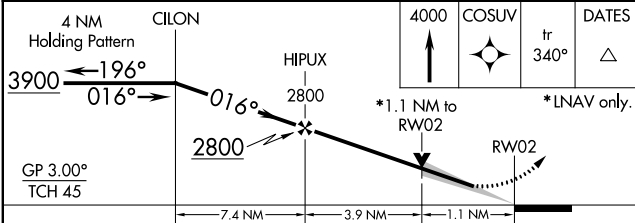
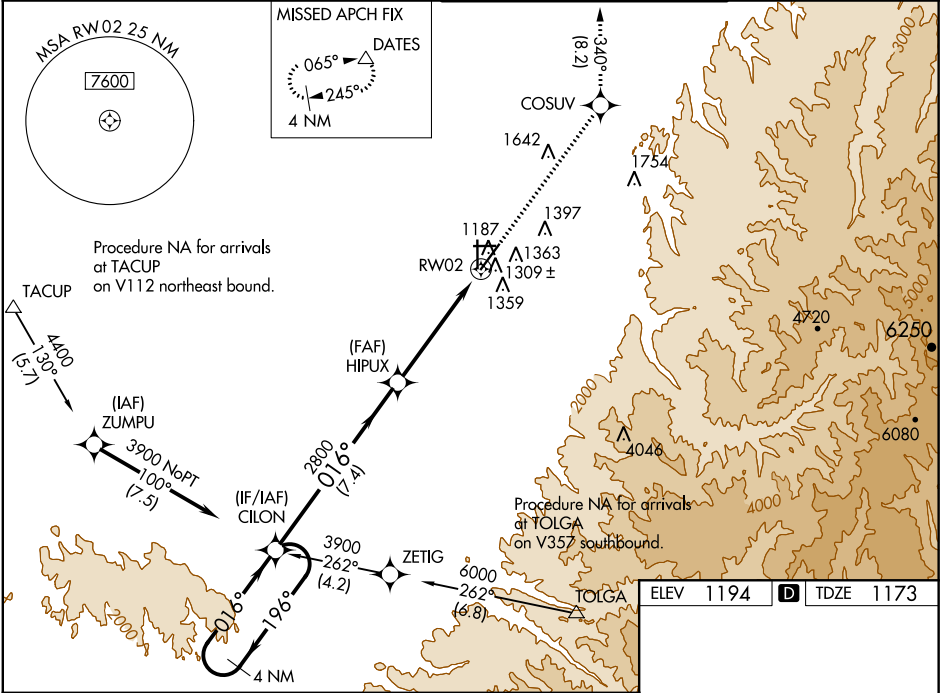
# RNAV (GPS) RWY 2

WALLA WALLA RGNL (ALW)

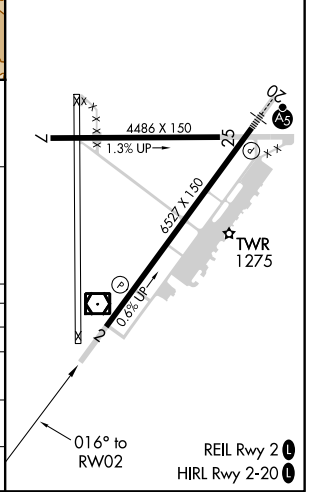
**⚠** For uncompensated Baro-VNAV systems, LNAV/VNAV NA below -11°C (13°F) or above 54°C (130°F). DME/DME RNP-0.3 NA. When local altimeter setting not received, use Pendleton altimeter setting and increase all DA/MDA 120 feet and LPV all visibilities ¼ mile, LNAV/VNAV all visibilities ⅓ mile, LNAV Cats C/D visibility ⅓ mile, and Circling Cat C visibility ¼ mile. VDP and Baro-VNAV NA when using Pendleton altimeter setting.

**MISSED APPROACH:** Climb to 4000 direct COSUV and on track 340° to DATES and hold.

ASOS <b>135.875</b>	CHINOOK APP CON * <b>133.15 379.15</b>	WALLA WALLA TOWER * <b>118.5 (CTAF) 0 289.4</b>	GND CON <b>121.6 289.4</b>
------------------------	---	--	-------------------------------



ELEV 1194	<b>D</b>	TDZE 1173
-----------	----------	-----------



CATEGORY	A	B	C	D
LPV DA		1373-3/4	200 (200-3/4)	
LNAV/VNAV DA		1509-1 1/8	336 (400-1 1/8)	
LNAV MDA	1560-1	387 (400-1)	1560-1 1/8	387 (400-1 1/8)
<b>C</b> CIRCLING	1760-1 566 (600-1)	1820-1 626 (700-1)	2120-2 3/4 926 (1000-2 3/4)	2300-3 1106 (1200-3)

NW-1, 26 APR 2018 to 24 MAY 2018

NW-1, 26 APR 2018 to 24 MAY 2018