

LOC I-ALW 111.7	APP CRS 196°	Rwy ldg 6527 TDZE 1194 Apt Elev 1194
---------------------------	------------------------	---

ILS Z or LOC/DME RWY 20

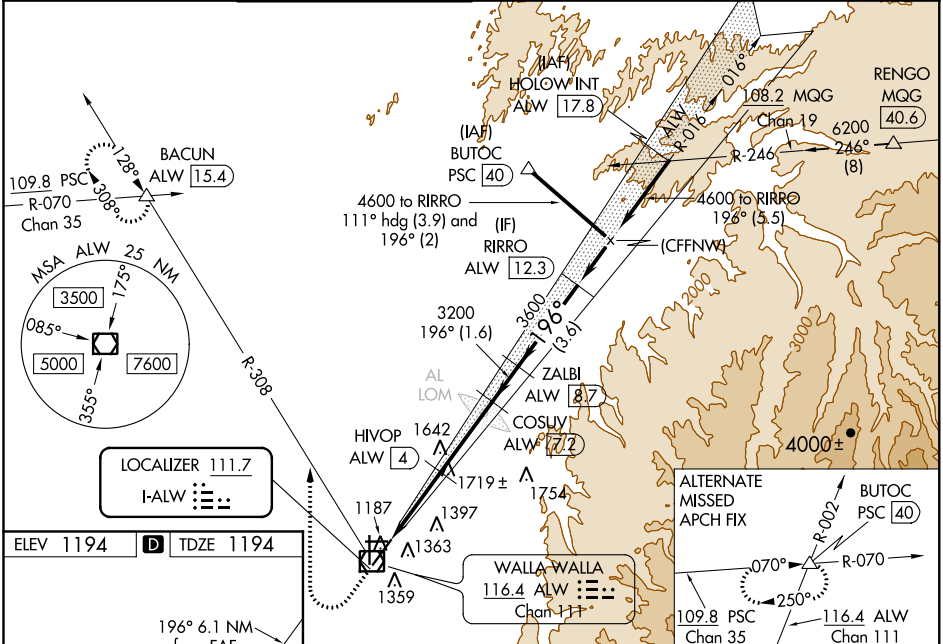
WALLA WALLA RGNL (ALW)

▼ DME required. When local altimeter setting not received, use Pendleton altimeter setting and increase all DA and all MDA 120 feet, increase S-LS 20 visibility to RVR 3200, increase S-LOC 20 Cat A visibility 3/8 mile, Cat C and D visibility 1/4 mile and Circling Cat A and C/D visibility 1/4 mile. VDP NA when using Pendleton altimeter setting. For inoperative MALSRS, when using Pendleton altimeter setting, increase S-LS 20 all Cats visibility to 5000 RVR. DME from ALW VOR/DME. Simultaneous reception of I-ALW and ALW VOR/DME required. For inoperative MALSRS, increase S-LOC 20 Cat C/D visibility 3/4 mile. # RVR 1800 authorized with use of FD or AP or HUD to DA.



MALSRS
MISSED APPROACH: Climb to 1800 then climbing right turn to 4000 on heading 340° and ALW VOR/DME R-308 to BACUN INT/ALW 15.4 DME and hold.

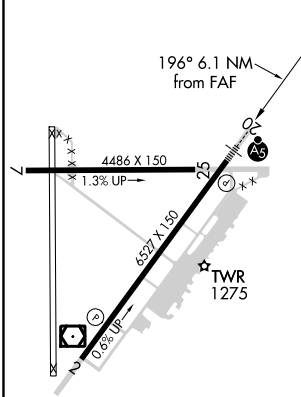
ASOS 135.875	CHINOOK APP CON ★ 133.15 379.15	WALLA WALLA TOWER ★ 118.5 (CTAF) 289.4	GND CON 121.6 289.4
------------------------	---	--	-------------------------------



NW-1, 26 APR 2018 to 24 MAY 2018

NW-1, 26 APR 2018 to 24 MAY 2018

ELEV 1194	D	TDZE 1194
-----------	----------	-----------



REIL Rwy 2 **1**
HIRL Rwy 2-20 **1**

1800	4000	ALW R-308	BACUN	COSUV ALW 7.2	ZALBI ALW 8.7	RIRRO ALW 12.3
*LOC only.						
ALW 1	*ALW 3.3	HIVOP ALW 4	3200	196°	4600	GS 3.00° TCH 50
2400*	3200	3600	4600			
2.3 NM	0.7 NM	3.1 NM	1.6 NM	3.6 NM		

CATEGORY	A	B	C	D
S-LS 20#	1394/24 200 (200-1/2)			
S-LOC 20	1980/24 786 (800-1/2)	1980/40 786 (800-3/4)	1980-1 3/4 786 (800-1 1/4)	786 (800-1 1/4)
C CIRCLING	1980-1 786 (800-1)	1980-1 1/4 786 (800-1 1/4)	2120-2 3/4 926 (1000-2 3/4)	2300-3 1106 (1200-3)