


LOC I-ALW <b>111.7</b>	APP CRS <b>196°</b>	Rwy ldg TDZE <b>6527 1194</b>	Apt Elev <b>1194</b>
---------------------------	------------------------	--------------------------------------	-------------------------

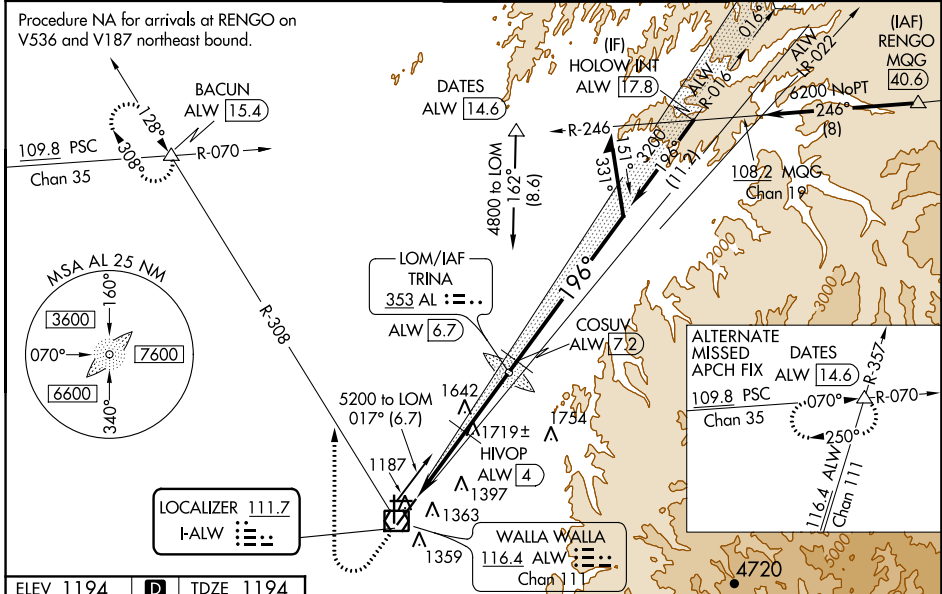
# ILS Y or LOC RWY 20

WALLA WALLA RGNL (ALW)

**⚠** VDP NA when using Pendleton altimeter setting. When local altimeter setting not received, use Pendleton altimeter setting and increase all DA and all MDA 120 feet. Increase S-ILS 20 visibility all Cats to RVR 3200, S-LOC 20 Cat A/C/D visibility 1/2 mile. Increase HIVOP DME FIX S-LOC 20 Cat A/C/D visibility 1/4 mile, and Circling Cat A and C visibility 1/4 mile. For inoperative MALSRL, when using Pendleton altimeter setting increase S-ILS 20 all Cats visibility to RVR 5500. For inoperative MALSRL increase HIVOP DME FIX minimums S-LOC 20 Cat C/D visibility 3/4 mile. Inoperative table does not apply to S-LOC 20 Cat A, C, and D visibility when using Pendleton altimeter setting. # RVR 1800 authorized with use of FD or AP or HUD to DA.

**MALSRL**  
  
 MISSED APPROACH:  
 Climb to 1800 then climbing right turn to 4000 on heading 340° and ALW VOR/DME R-308 to BACUN INT/ALW 15.4 DME and hold.

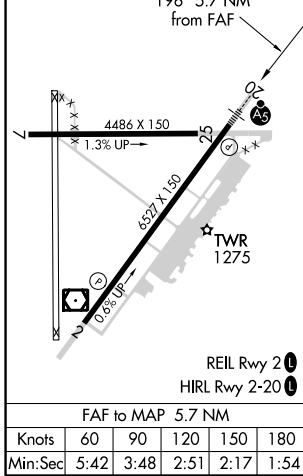
ASOS <b>135.875</b>	CHINOOK APP CON ★ <b>133.15 379.15</b>	WALLA WALLA TOWER ★ <b>118.5 (CTAF) 289.4</b>	GND CON <b>121.6 289.4</b>
------------------------	---	--	-------------------------------



NW-1, 26 APR 2018 to 24 MAY 2018

NW-1, 26 APR 2018 to 24 MAY 2018

ELEV 1194	<b>D</b>	TDZE 1194
-----------	----------	-----------



1800	4000	ALW R-308	BACUN	TRINA LOM ALW 6.7	Remain within 10 NM
*2400 when using Pendleton altimeter setting. *LOC only.					
ALW 1	*ALW 3.3	HIVOP ALW 4	COSUV ALW 7.2	3071	3200
-2.3 NM -0.7 -2.7 NM -0.5					

CATEGORY	A	B	C	D
S-ILS 20	#1394/24 200 (200-1/2)			
S-LOC 20	2280/40 1086 (1100-3/4)	2280/55 1086 (1100-1/4)	2280-2 1/2 1086 (1100-2 1/2)	1086 (1100-2 1/2)
<b>C</b> CIRCLING	2280-1 1/4 1086 (1100-1 1/4)	2280-1 1/2 1086 (1100-1 1/2)	2280-3 1086 (1100-3)	2300-3 1106 (1200-3)
HIVOP DME FIX MINIMUMS				
S-LOC 20	1980/24 786 (800-1/2)	1980/40 786 (800-3/4)	1980-1 3/4 786 (800-1 3/4)	786 (800-1 3/4)
<b>C</b> CIRCLING	1980-1 786 (800-1)	1980-1 1/4 786 (800-1 1/4)	2120-2 3/4 926 (1000-2 3/4)	2300-3 1106 (1200-3)