

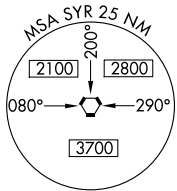
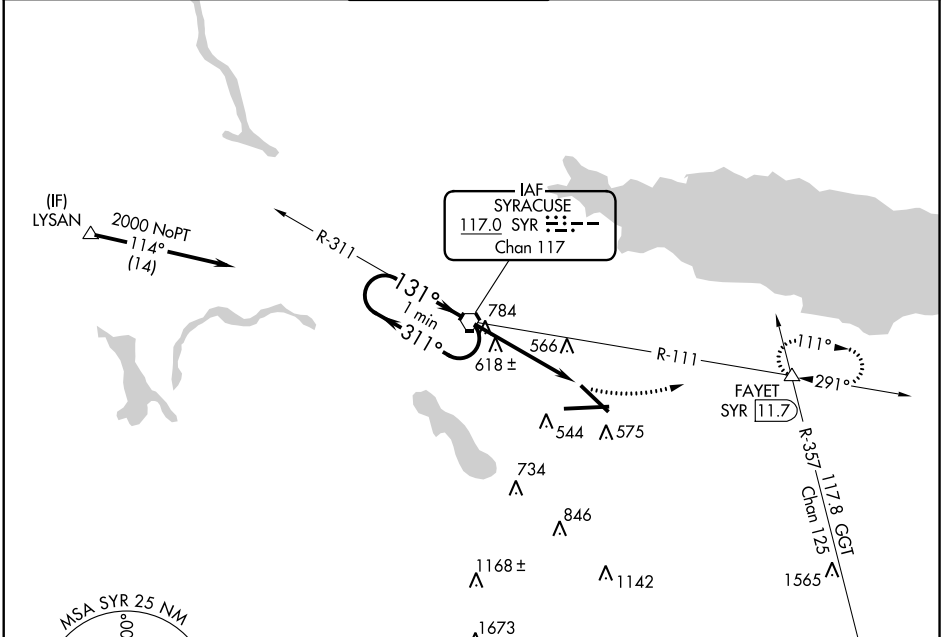
VORTAC SYR 117.0 Chan 117	APP CRS 131°	Rwy ldg TDZE Apt Elev 7500 417 421
---	------------------------	--

VOR RWY 15

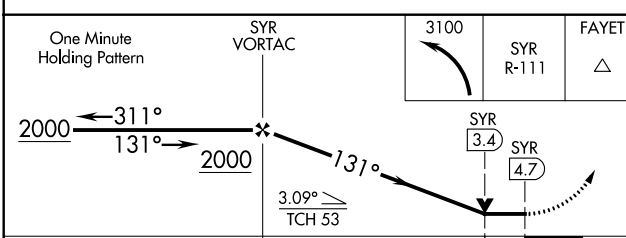
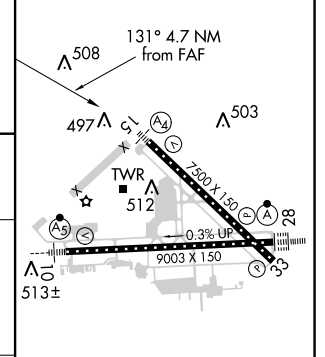
SYRACUSE HANCOCK INTL (SYR)

<p>▼ Inoperative table does not apply. Helicopter visibility reduction below 3/4 SM NA.</p>	<p>MALS A4</p>	<p>MISSED APPROACH: Climbing left turn to 3100 via SYR R-111 to FAYET Int/SYR 11.7 DME and hold, continue climb-in-hold to 3100.</p>

<p>ATIS 124.225</p>	<p>SYRACUSE APP CON 134.275 279.6</p>	<p>SYRACUSE TOWER 120.3 239.0</p>	<p>GND CON 121.7 348.6</p>	<p>CLNC DEL 125.05 257.775</p>
--------------------------------	--	--	---------------------------------------	---



ELEV 421	D TDZE 417
----------	-------------------



CATEGORY	A	B	C	D
S-15	880-1	463 (500-1)	880-1 3/8	463 (500-1 3/8)
CIRCLING	880-1 459 (500-1)	900-1 479 (500-1)	900-1 1/2 479 (500-1 1/2)	980-2 559 (600-2)

TDZ/CL Rwy 28					
HIRL Rwy 10-28 and 15-33					
FAF to MAP 4.7 NM					
Knots	60	90	120	150	180
Min:Sec	4:42	3:08	2:21	1:53	1:34

NE-2, 26 APR 2018 to 24 MAY 2018

NE-2, 26 APR 2018 to 24 MAY 2018