

WAAS CH 45517 W28A	APP CRS 281°	Rwy Idg TDZE Apt Elev	9003 413 421
--	------------------------	-----------------------------	---

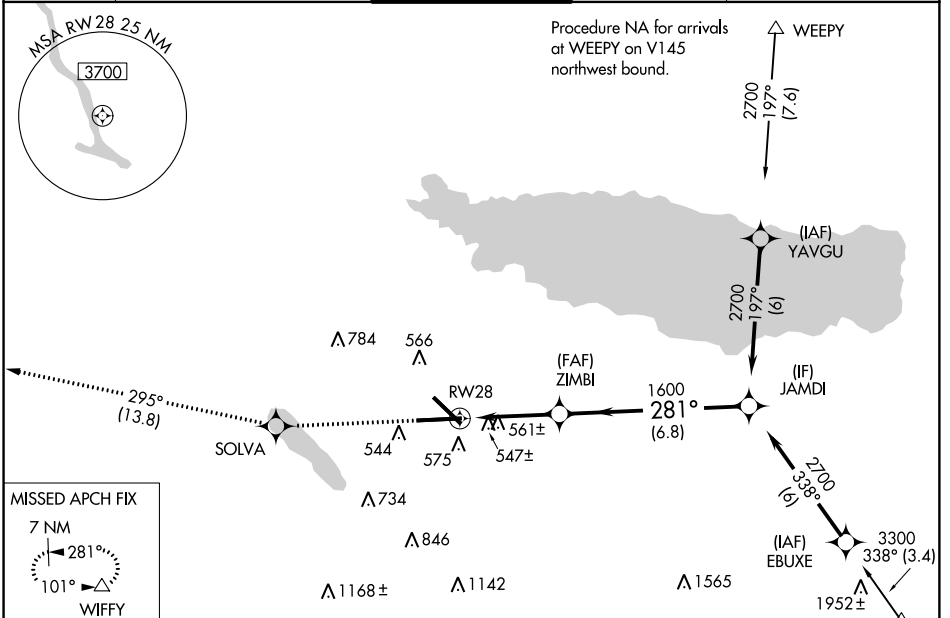
RNAV (GPS) Z RWY 28

SYRACUSE HANCOCK INTL (SYR)

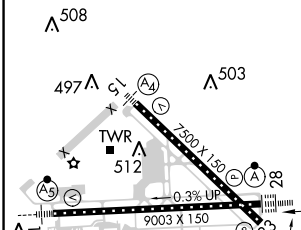
▽ For uncompensated Baro-VNAV systems, LNAV/VNAV NA below -21°C (-6°F) or above 54°C (130°F). DME/DME RNP-0.3 NA. For inop ALSF-2, increase LNAV Cats C/D visibility to 1½ mile.

ALSF-2
 MISSED APPROACH: Climb to 3000 direct SOLVA and on track 295° to WIFFY and hold.

ATIS 124.225	SYRACUSE APP CON 134.275 279.6	SYRACUSE TOWER 120.3 239.0	GND CON 121.7 348.6	CLNC DEL 125.05 257.775
------------------------	--	--------------------------------------	-------------------------------	-----------------------------------



ELEV 421	D	TDZE 413
-----------------	----------	-----------------



CATEGORY	A	B	C	D
LPV DA	613/18 200 (200-½)			
LNAV/VNAV DA	850/50 437 (500-1)			
LNAV MDA	820/24	407 (400-½)	820/40	407 (400-¾)
CIRCLING	880-1 459 (500-1)	900-1 479 (500-1)	900-1½ 479 (500-1½)	980-2 559 (600-2)

NE-2, 26 APR 2018 to 24 MAY 2018

NE-2, 26 APR 2018 to 24 MAY 2018