

WAAS CH <b>40017</b> <b>W10A</b>	APP CRS <b>100°</b>	Rwy Idg TDZE <b>421</b> Apt Elev <b>421</b>	<b>9003</b>
--	------------------------	---	-------------

# RNAV (GPS) Z RWY 10

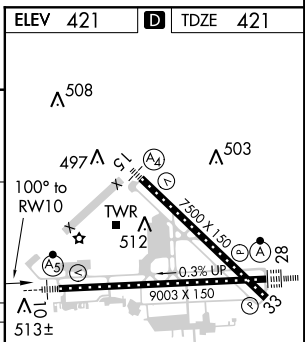
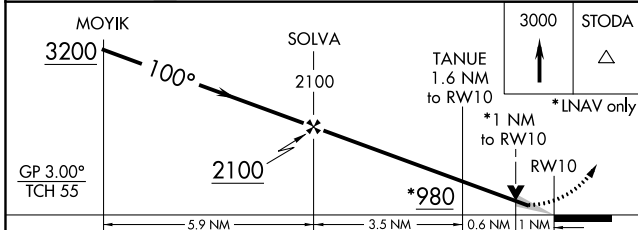
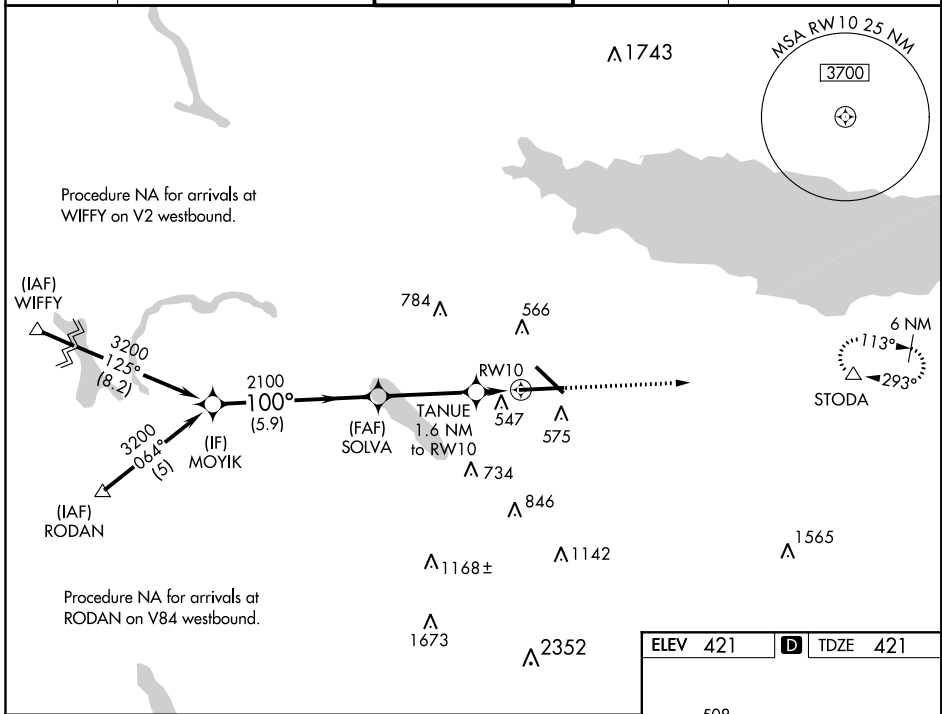
SYRACUSE HANCOCK INTL (SYR)

**▼** For uncompensated Baro-VNAV systems, LNAV/VNAV NA below -21°C (-6°F) or above 54°C (130°F). DME/DME RNP-0.3 NA. For inop MALS, increase LNAV/VNAV all Cats visibility to RVR 4500. \*\* RVR 1800 authorized with use of FD or AP or HUD to DA.



**MISSED APPROACH:**  
Climb to 3000 direct  
STODA and hold.

ATIS <b>124.225</b>	SYRACUSE APP CON <b>134.275 279.6</b>	SYRACUSE TOWER <b>120.3 239.0</b>	GND CON <b>121.7 348.6</b>	CLNC DEL <b>125.05 257.775</b>
------------------------	--	--------------------------------------	-------------------------------	-----------------------------------



CATEGORY	A	B	C	D
LPV DA**		621/24	200 (200-½)	
LNAV/VNAV DA		720/24	299 (300-½)	
LNAV MDA	800/24	379 (400-½)	800/35	379 (400-¾)
CIRCLING	880-1 459 (500-1)	900-1 479 (500-1)	900-1½ 479 (500-1½)	980-2 559 (600-2)

TDZ/CL Rwy 28  
HIRL Rws 10-28 and 15-33

NE-2, 26 APR 2018 to 24 MAY 2018

NE-2, 26 APR 2018 to 24 MAY 2018