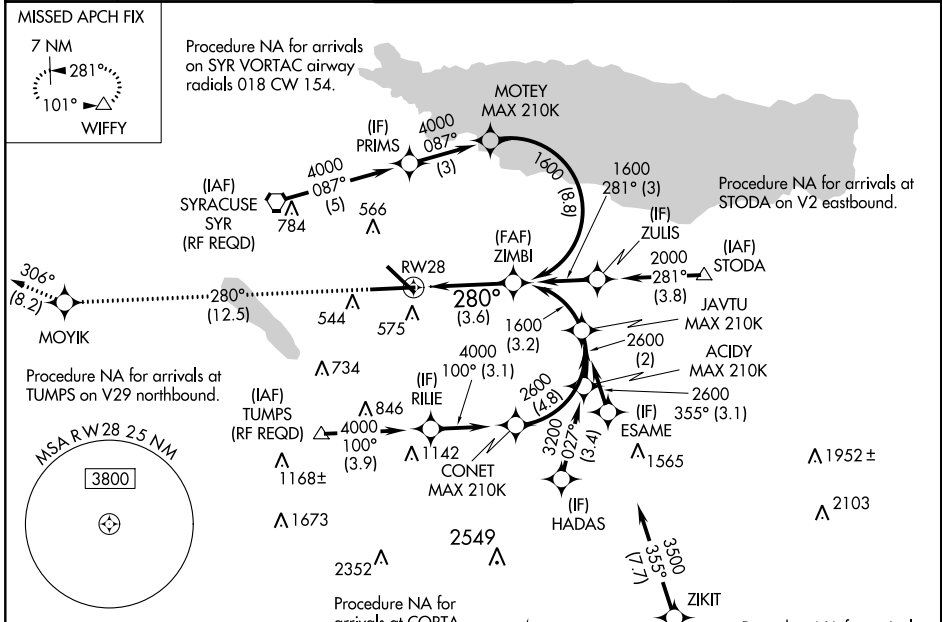


APP CRS 280°	Rwy Idg TDZE Apt Elev	9003 413 421
------------------------	-----------------------------	-----------------------------

RNAV (RNP) Y RWY 28

SYRACUSE HANCOCK INTL (SYR)

GPS required. For uncompensated Baro-VNAV systems, procedure NA below -18°C (0°F) or above 54°C (130°F). For inoperative ALSF-2, increase RNP 0.15 all Cats visibility to 1½. For inoperative ALSF-2, increase RNP 0.30 all Cats visibility to 1¾.		ALSF-2 	MISSED APPROACH: Climb to 3000 on track 280° to MOYIK and on track 306° to WIFFY and hold.	
ATIS 124.225	SYRACUSE APP CON 134.275 279.6	SYRACUSE TOWER 120.3 239.0	GND CON 121.7 348.6	CLNC DEL 125.05 257.775



NE-2, 26 APR 2018 to 24 MAY 2018

NE-2, 26 APR 2018 to 24 MAY 2018

ELEV 421	D TDZE 413
----------	-------------------

TDZ/CL Rwy 28
HIRL Rwy 10-28 and 15-33

3000 MOYIK WIFFY tr 280° tr 306°	See planview for multiple IF locations.	ZIMBI 1600
RW28 280° 1600		GP 3.00° TCH 60
CATEGORY A B C D		
RNP 0.15 DA 862/55 449 (500-1½)		
RNP 0.30 DA 957-1¾ 544 (600-1¾)		
AUTHORIZATION REQUIRED		