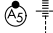


APP CRS 100°	Rwy Idg 9003
	TDZE 421
	Apt Elev 421

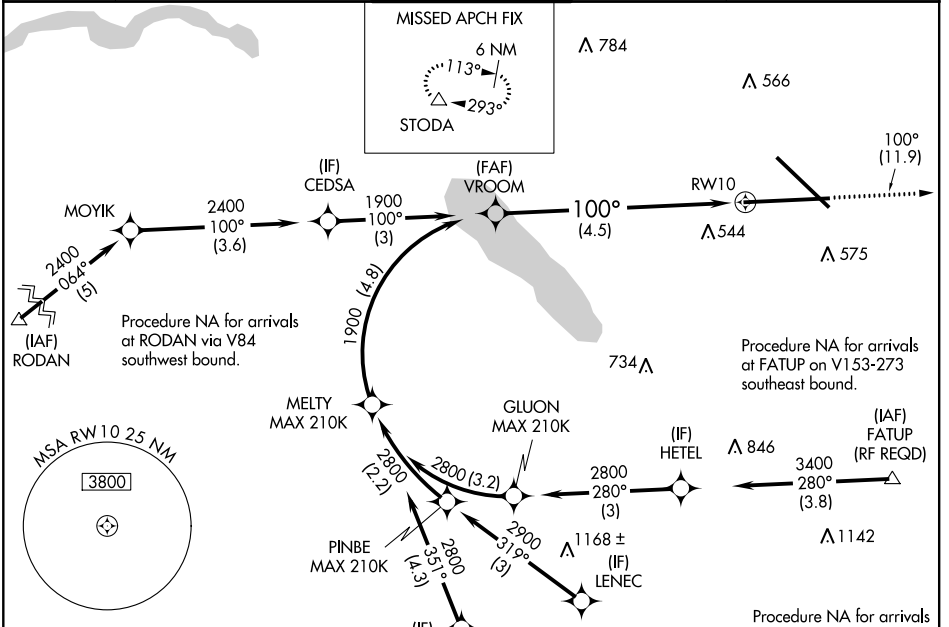
RNAV (RNP) Y RWY 10

SYRACUSE HANCOCK INTL (SYR)

▼ For uncompensated Baro-VNAV systems, procedure NA below -18°C (0°F) or above 54°C (130°F). For inoperative MALS/R, increase RNP 0.15 all Cats visibility to 1½. For inoperative MALS/R, increase RNP 0.30 all Cats visibility to 1½. GWS required.

MALS/R

MISSED APPROACH:
 Climb to 3000 on track 100° to STODA and hold.

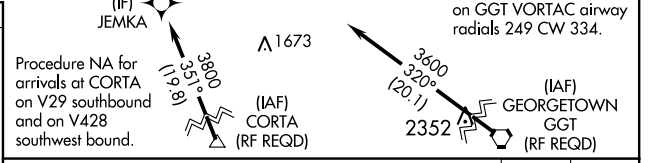
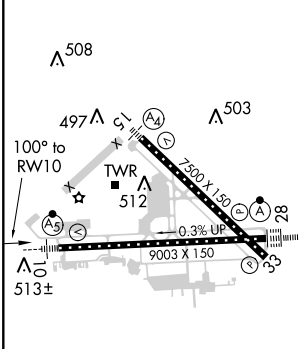
ATIS 124.225	SYRACUSE APP CON 134.275 279.6	SYRACUSE TOWER 120.3 239.0	GND CON 121.7 348.6	CLNC DEL 125.05 257.775
-------------------------------	---	---	--------------------------------------	--



NE-2, 26 APR 2018 to 24 MAY 2018

NE-2, 26 APR 2018 to 24 MAY 2018

ELEV 421	D	TDZE 421
----------	----------	----------



CATEGORY	A	B	C	D
RNP 0.15 DA		816/45	395 (400-7%)	
RNP 0.30 DA		881/55	460 (500-1¼)	

AUTHORIZATION REQUIRED