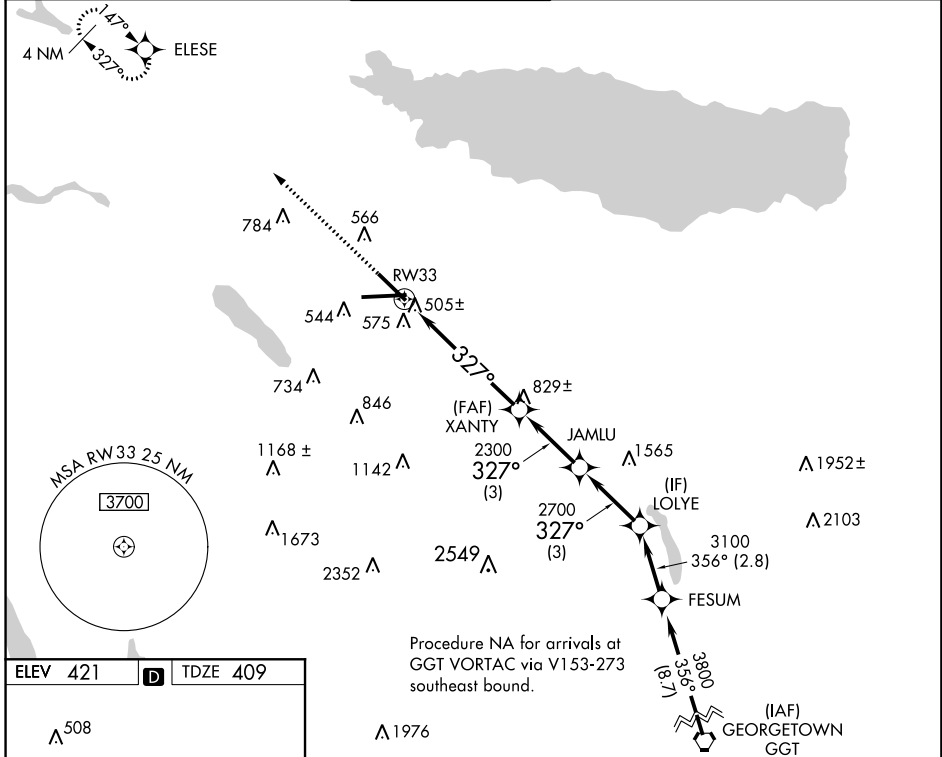


WAAS CH <b>81823</b> <b>W33A</b>	APP CRS <b>327°</b>	Rwy ldg TDZE Apt Elev	<b>7500</b> <b>409</b> <b>421</b>
--	------------------------	-----------------------------	---

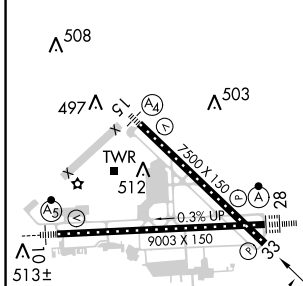
# RNAV (GPS) RWY 33

SYRACUSE HANCOCK INTL (SYR)

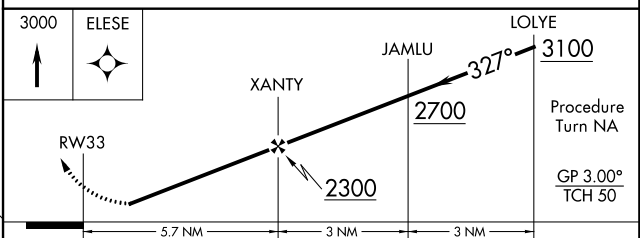
<p>Baro-VNAV NA below -15°C (5°F). DME/DME RNP-0.3 NA.</p>		<p>MISSED APPROACH: Climb to 3000 direct ELESE and hold.</p>		
<p>ATIS <b>124.225</b></p>	<p>SYRACUSE APP CON <b>134.275 279.6</b></p>	<p>SYRACUSE TOWER <b>120.3 239.0</b></p>	<p>GND CON <b>121.7 348.6</b></p>	<p>CLNC DEL <b>125.05 257.775</b></p>



ELEV 421	<b>D</b>	TDZE 409
----------	----------	----------



TDZ/CL Rwy 28  
HIRL Rws 10-28 and 15-33



CATEGORY	A	B	C	D
LPV DA	734/60 325 (400-1¼)			
LNAV/VNAV DA	874-1¾ 465 (500-1¾)			
LNAV MDA	880/50	471 (500-1)	880/60 471 (500-1¼)	880-1½ 471 (500-1½)
CIRCLING	880-1¾	459 (500-1¾)	900-1¾ 479 (500-1¾)	980-2 559 (600-2)

NE-2: 26 APR 2018 to 24 MAY 2018

NE-2: 26 APR 2018 to 24 MAY 2018