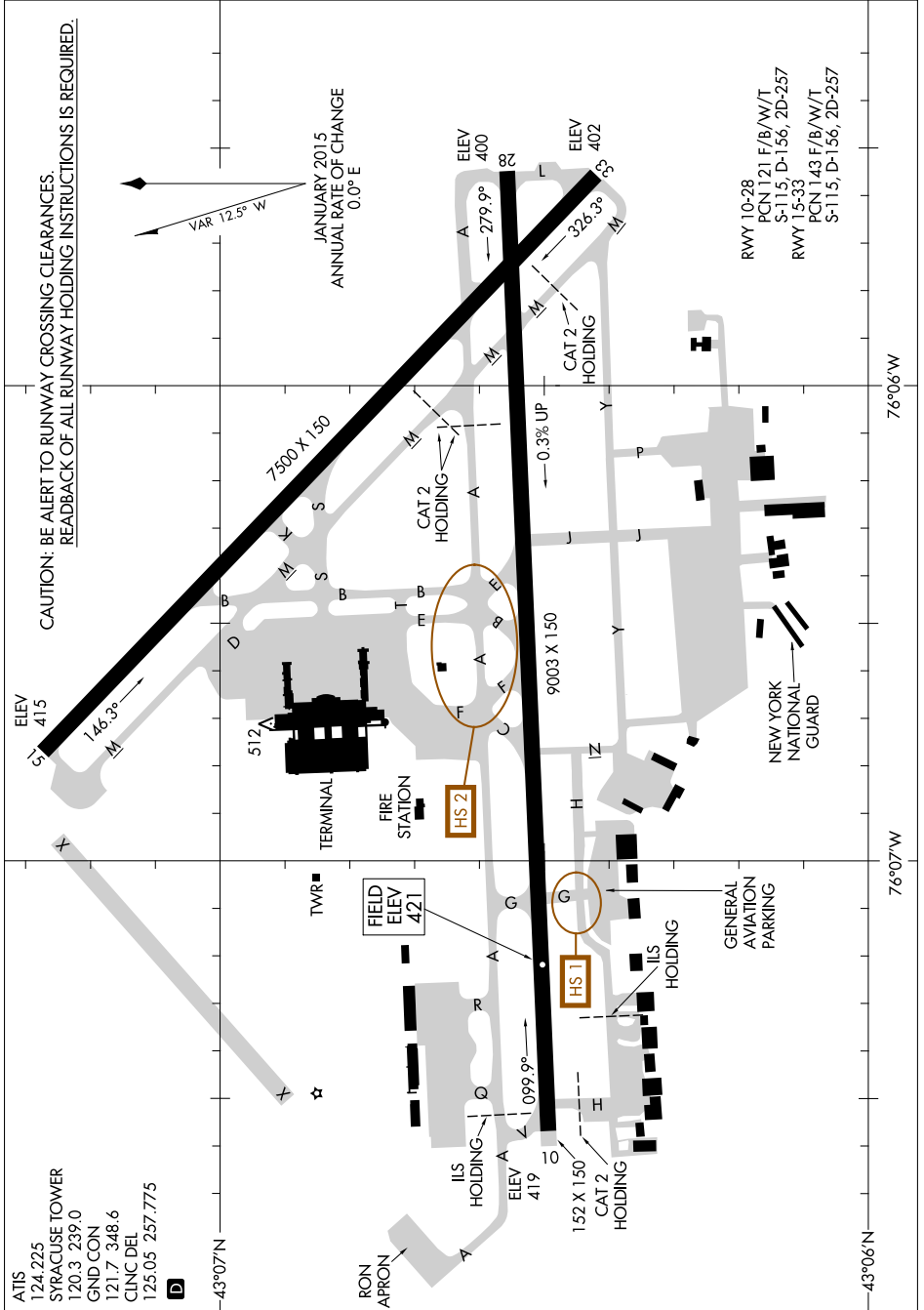


AIRPORT DIAGRAM

AL-411 (FAA)

SYRACUSE HANCOCK INTL (SYR)
SYRACUSE, NEW YORK

NE-2, 26 APR 2018 to 24 MAY 2018



NE-2, 26 APR 2018 to 24 MAY 2018

AIRPORT DIAGRAM

SYRACUSE, NEW YORK
SYRACUSE HANCOCK INTL (SYR)