

LOC/DME I-SEM <b>110.5</b> Chan <b>42</b>	APP CRS <b>329°</b>	Rwy Idg <b>8014</b> TDZE <b>165</b> Apt Elev <b>166</b>
---	------------------------	---

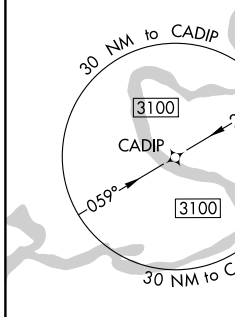
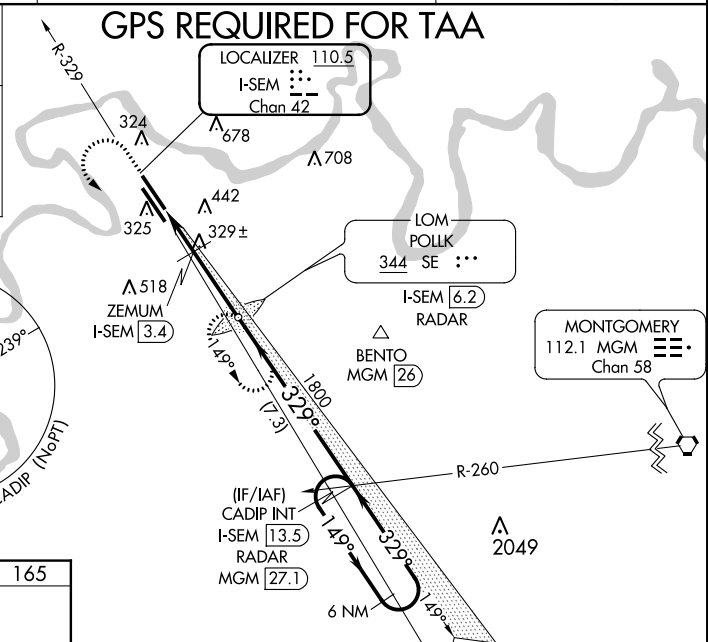
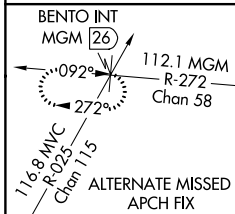
# ILS Y or LOC Y RWY 33

CRAIG FIELD (SEM)

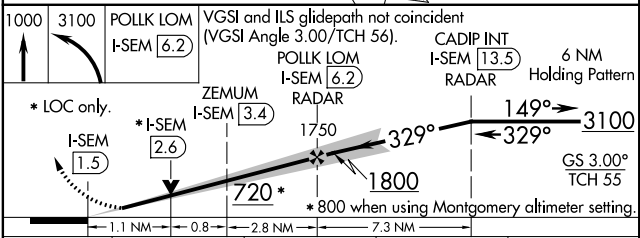
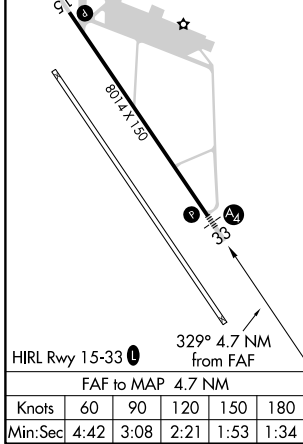
For inoperative MALS, increase S-LOC 33 Cat D visibility to 1½ and increase ZEMUM fix minimums S-LOC 33 Cats C and D visibility to 1½ mile. VDP NA with Montgomery altimeter setting. When local altimeter setting not received, use Montgomery altimeter setting and increase DA 78 feet, all MDA 80 feet, increase S-LOC 33 Cats C and D visibility ½ mile, Circling Cat C visibility ½ mile and Circling Cat D visibility ¼ mile, increase ZEMUM fix minimums S-LOC 33 Cats C and D visibility ½ mile and Circling Cat C visibility ½ mile and Circling Cat D visibility ¼ mile. For inoperative MALS, when using Montgomery altimeter setting, increase S-ILS 33 all Cats visibility to ½ mile, S-LOC 33 Cats C and D visibility to ¾ mile and increase ZEMUM fix minimums Cats C and D visibility to 1½ mile. ADF required.

MALS  
 MISSED APPROACH: Climb to 1000 then climbing left turn to 3100 direct POLLK LOM/I-SEM 6.2 DME/RADAR and hold, continue climb-in-hold to 3100.

AWOS-3PT <b>119.15</b>	MONTGOMERY APP CON * <b>124.0 363.025</b>	UNICOM <b>122.7</b> (CTAF)
---------------------------	--	-------------------------------



ELEV <b>166</b>	TDZE <b>165</b>
-----------------	-----------------



CATEGORY	A	B	C	D
S-ILS 33	365-¾		200 (200-¾)	
S-LOC 33	720-¾	555 (600-¾)	720-1½	555 (600-1½)
CIRCLING	720-1	760-1	760-1½	1040-2¾
	554 (600-1)	594 (600-1)	594 (600-1½)	874 (900-2¾)
ZEMUM FIX MINIMUMS				
S-LOC 33	580-¾	415 (500-¾)	580-1	415 (500-1)
CIRCLING	660-1	760-1	760-1½	1040-2¾
	494 (500-1)	594 (600-1)	594 (600-1½)	874 (900-2¾)

SE-4, 26 APR 2018 to 24 MAY 2018

SE-4, 26 APR 2018 to 24 MAY 2018