

ARLIN FOUR ARRIVAL

AL-322 (FAA)

PHOENIX, ARIZONA

SW-4, 26 APR 2018 to 24 MAY 2018

ARRIVAL ROUTE DESCRIPTION

BLYTHE TRANSITION (BLH.ARLIN4): From over BLH VORTAC on BLH R-089 and IWA R-256 to ARLIN INT. Thence. . . .

MOHAK TRANSITION (MOHAK.ARLIN4): From over MOHAK INT on GBN R-247 and BXK R-215 to HYDRR INT, then on IWA R-256 to ARLIN INT. Thence. . . .

PHOENIX SKY HARBOR INTL: Rwy 7L/R or 8: From over ARLIN, Expect vectors to final approach course; Rwy 25L/R or 26: From over ARLIN, on IWA R-256 to TUKEE. Expect vectors to final approach course prior to TUKEE.

SATELLITE AIRPORTS: Expect vectors after passing SCOPE or JUDTH.

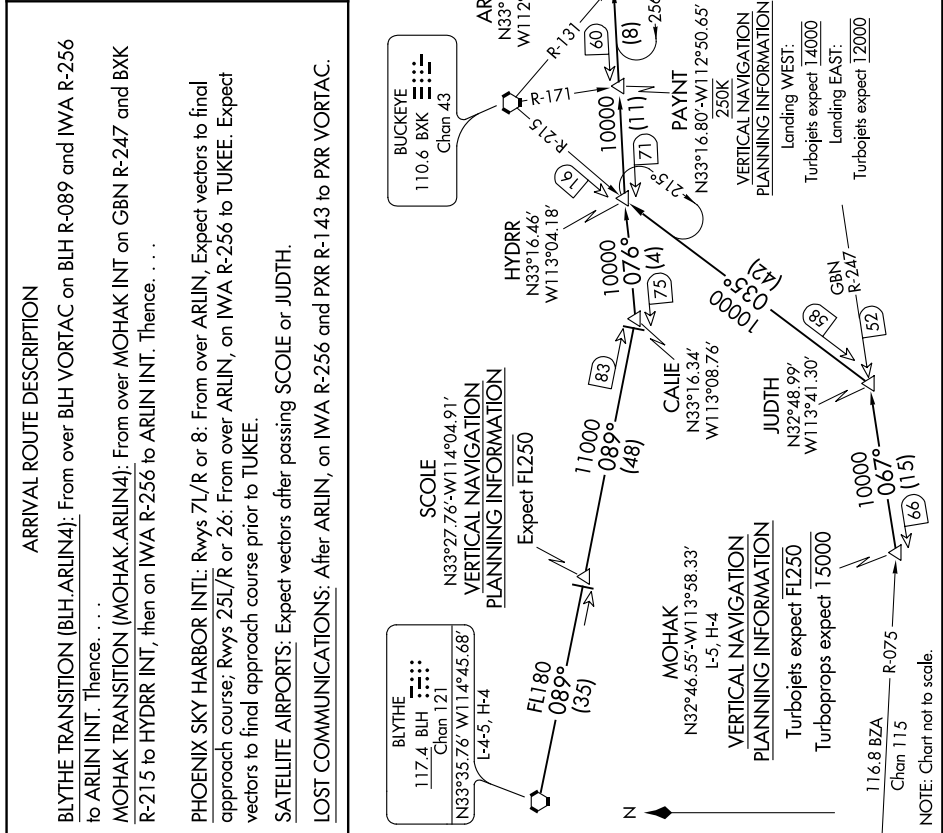
LOST COMMUNICATIONS: After ARLIN, on IWA R-256 and PXR R-143 to PXR VORTAC.

PHOENIX APP CON 124.1 256.9
 PHOENIX TOWER 118.7 278.8 (Rwy 8-26)
 PHOENIX GND CON 120.9 254.3 (Rwy 7L-23R, 7R-25L)
 CHANDLER MUNI ATIS 119.75 269.2
 FALCON FIELD ATIS 128.325
 PHOENIX DEER VALLEY ATIS 118.25
 PHOENIX-MESA GATEWAY ATIS 126.5
 PHOENIX SKY HARBOR D-ATIS 133.5 270.275
 SCOTTSDALE ATIS 127.575
 SCOTTSDALE ATIS 118.6

PHOENIX-DEER VALLEY
 PHOENIX SKY HARBOR INTL
 AMBRR
 STELLAR
 ALEYS
 TUKEE
 CHANDLER MUNI
 PHOENIX-MESA GATEWAY
 FALCON FIELD

PHOENIX-DEER VALLEY
 PHOENIX SKY HARBOR INTL
 AMBRR
 STELLAR
 ALEYS
 TUKEE
 CHANDLER MUNI
 PHOENIX-MESA GATEWAY
 FALCON FIELD

NOTE: RADAR required
 NOTE: DME required



SW-4, 26 APR 2018 to 24 MAY 2018

ARLIN FOUR ARRIVAL

PHOENIX, ARIZONA