

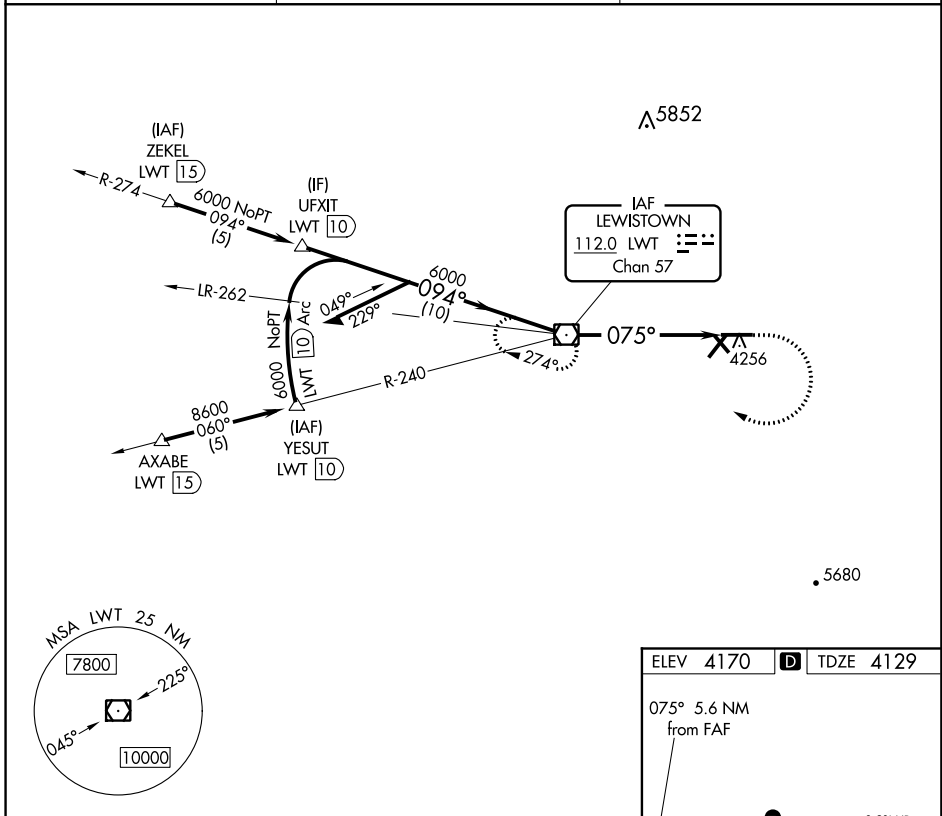
VOR/DME LWT 112.0 Chan 57	APP CRS 075°	Rwy Idg 6100 TDZE 4129 Apt Elev 4170
---	------------------------	---

VOR RWY 8

LEWISTOWN MUNI (LWT)

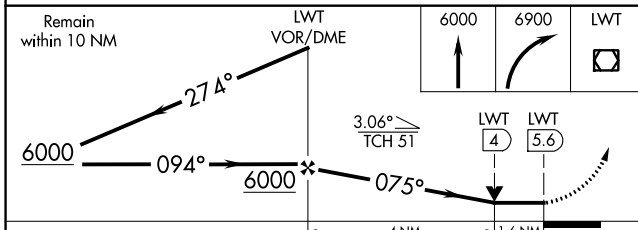
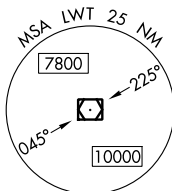
▲ MISSED APPROACH: Climb to 6000 then climbing right turn to 6900 direct LWT VOR/DME and hold.

ASOS 118.375	GREAT FALLS RADIO 122.2	UNICOM 123.0 (CTAF) ①
------------------------	-----------------------------------	---------------------------------

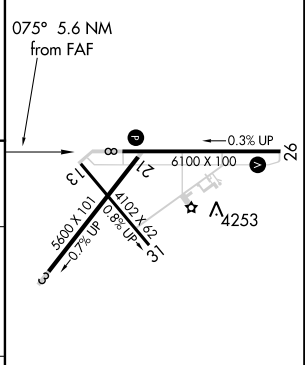


NW-1, 26 APR 2018 to 24 MAY 2018

NW-1, 26 APR 2018 to 24 MAY 2018



ELEV 4170	D TDZE 4129
-----------	--------------------



CATEGORY	A	B	C	D
S-8	4680-1	551 (600-1)	4680-1 5/8	551 (600-1 5/8)
C CIRCLING	4680-1 510 (600-1)	4820-1 650 (700-1)	4980-2 1/4 810 (900-2 1/4)	5240-3 1070 (1100-3)

REIL Rwys 8 and 26 ①
MIRL Rwys 3-21, 8-26 and 13-31 ①

FAF to MAP 5.6 NM

Knots	60	90	120	150	180
Min:Sec	5:36	3:44	2:48	2:14	1:52