

VOR/DME LAR 117.6 Chan 123	APP CRS 292°	Rwy Idg TDZE Apt Elev 6300 7278 7284
---	------------------------	--

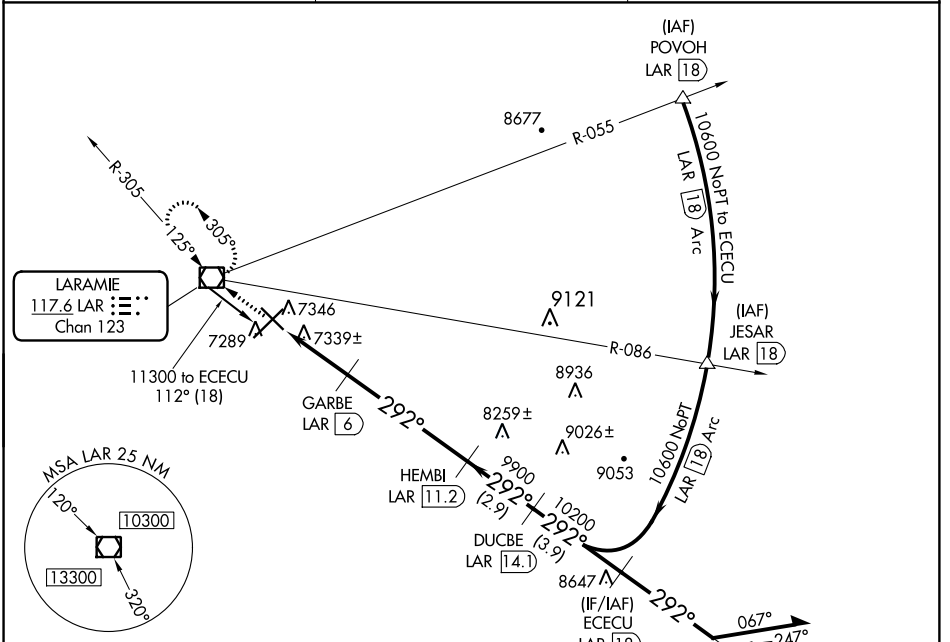
VOR/DME RWY 30

LARAMIE RGNL (L.A.R.)

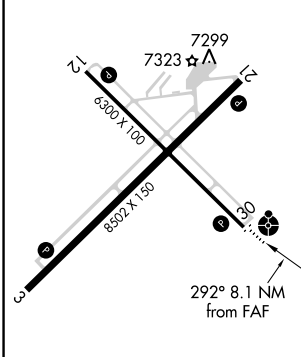
ODALS MISSED APPROACH: Climb to 9600 direct LAR VOR/DME and hold, continue climb-in-hold to 9600.

35°C

ASOS 135.475	DENVER CENTER 125.9 284.7	UNICOM 123.05 (CTAF)
------------------------	-------------------------------------	--------------------------------



ELEV 7284	D	TDZE 7278
-----------	----------	-----------



REIL Rws 3, 12 and 21
MIRL Rws 3-21 and 12-30

9600	LAR	ECECU LAR 18	Remain within 10 NM
LAR 4	GARBE LAR 6	HEMBI LAR 11.2	DUCBE LAR 14.1
8220	9900	10200	10600
0.9	2 NM	5.2 NM	2.9 NM
3.9 NM			
CATEGORY	A	B	C
S-30	7600-¾ 322 (400-¾)		7600-1 322 (400-1)
CIRCLING	7660-1 376 (400-1)	7740-1 456 (500-1)	7740-1½ 456 (500-1½) 7840-2 556 (600-2)

NW-1, 26 APR 2018 to 24 MAY 2018

NW-1, 26 APR 2018 to 24 MAY 2018