

WAAS CH <b>86325</b> <b>W03A</b>	APP CRS <b>033°</b>	Rwy Idg TDZE Apt Elev	<b>8502</b> <b>7284</b> <b>7284</b>
--	------------------------	-----------------------------	---

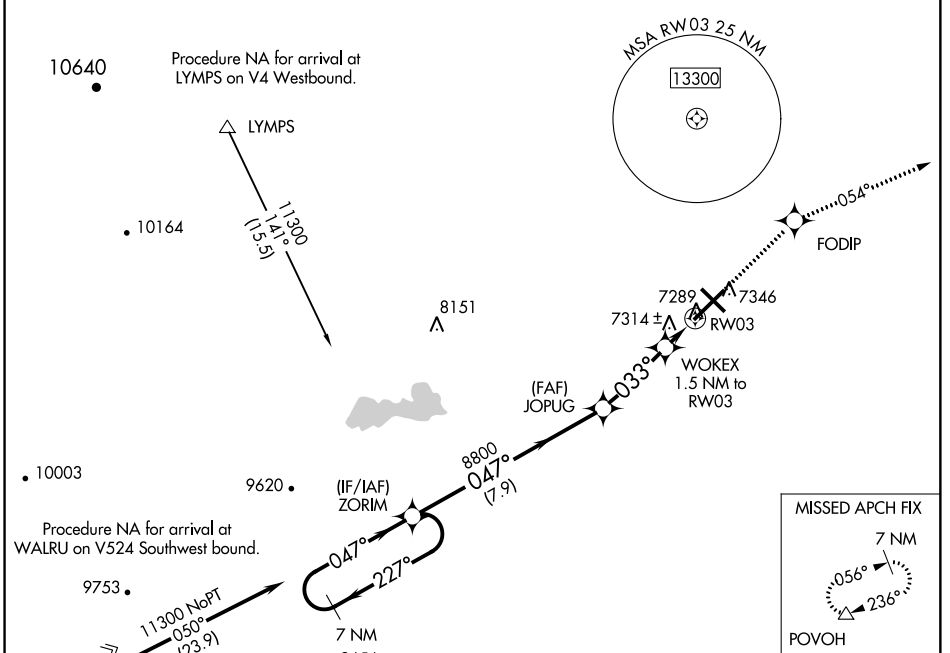
# RNAV (GPS) RWY 3

LARAMIE RGNL (L.A.R.)

**⚠** DME/DME RNP-0.3 NA. Circling to Rwy 30 NA at night. Baro-VNAV NA. Helicopter visibility reduction below 3/4 SM NA.

**⚠** MISSED APPROACH: Climb to 11000 direct FODIP and on track 054° to POVOH and hold, continue climb-in-hold to 11000.

ASOS <b>135.475</b>	DENVER CENTER <b>125.9 284.7</b>	UNICOM <b>123.05 (CTAF) 0</b>
------------------------	-------------------------------------	----------------------------------



ELEV 7284	<b>D</b> TDZE 7284
-----------	--------------------

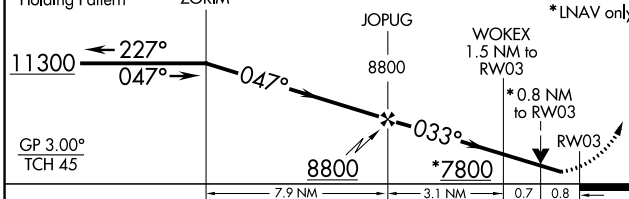
VGSI and RNAV Glidepath not coincident (VGSI Angle 3.00/TCH 32).

7 NM Holding Pattern ZORIM

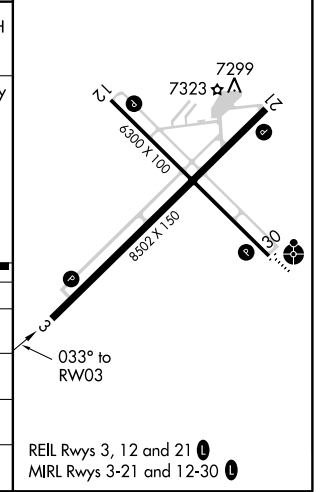
FODIP 11000

POVOH 11000

tr 054°



CATEGORY	A	B	C	D
LPV DA		7534-3/4	250 (300-3/4)	
LNAV/VNAV DA		7534-3/4	250 (300-3/4)	
LNAV MDA	7580-1	296 (300-1)	7580-7/8	296 (300-7/8)
CIRCLING	7660-1 376 (400-1)	7740-1 456 (500-1)	7740-1 1/2 456 (500-1 1/2)	7840-2 556 (600-2)



NW-1, 26 APR 2018 to 24 MAY 2018

NW-1, 26 APR 2018 to 24 MAY 2018