

VORTAC CZQ <b>112.9</b> Chan <b>76</b>	APP CRS <b>347°</b>	Rwy Idg TDZE Apt Elev	<b>N/A</b> <b>N/A</b> <b>280</b>
--	------------------------	-----------------------------	--

**VOR/DME or GPS-C**  
FRESNO CHANDLER EXECUTIVE (FCH)

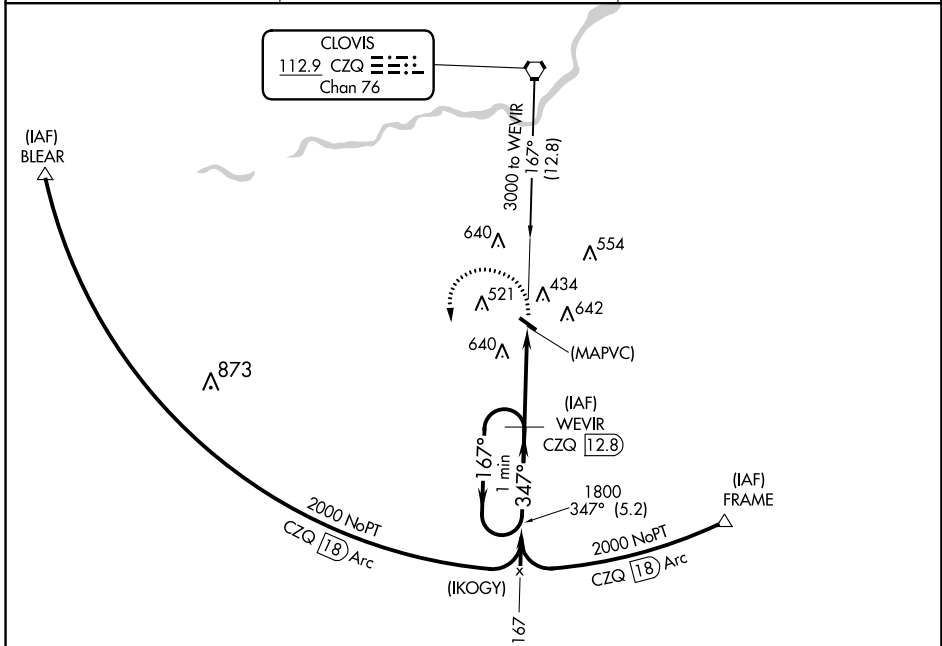
**▽** If local altimeter setting not received, use Fresno Yosemite Intl altimeter setting and increase MDA 20 feet.

**MISSED APPROACH:** Climbing left turn to 2000 via R-167 to WEVIR 12.8 DME and hold.

AWOS-3  
**135.225**

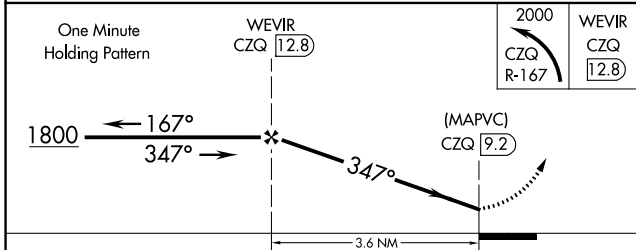
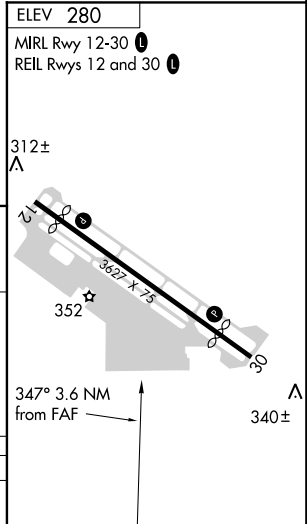
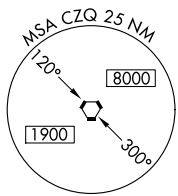
FRESNO APP CON  
**119.0 323.25**

UNICOM  
**123.0 (CTAF) ①**



SW-2, 26 APR 2018 to 24 MAY 2018

SW-2, 26 APR 2018 to 24 MAY 2018



CATEGORY	A	B	C	D
CIRCLING	1020-1	740 (800-1)	1020-2 740 (800-2)	NA