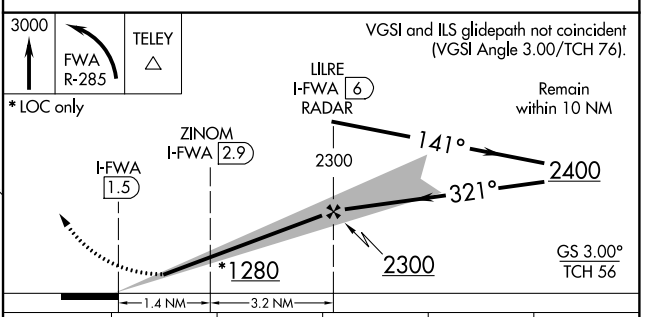
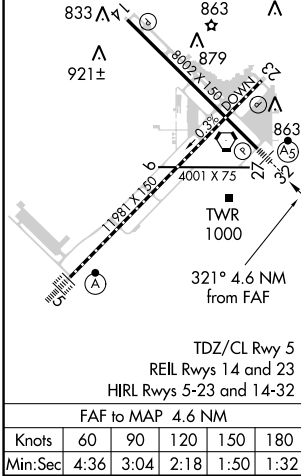
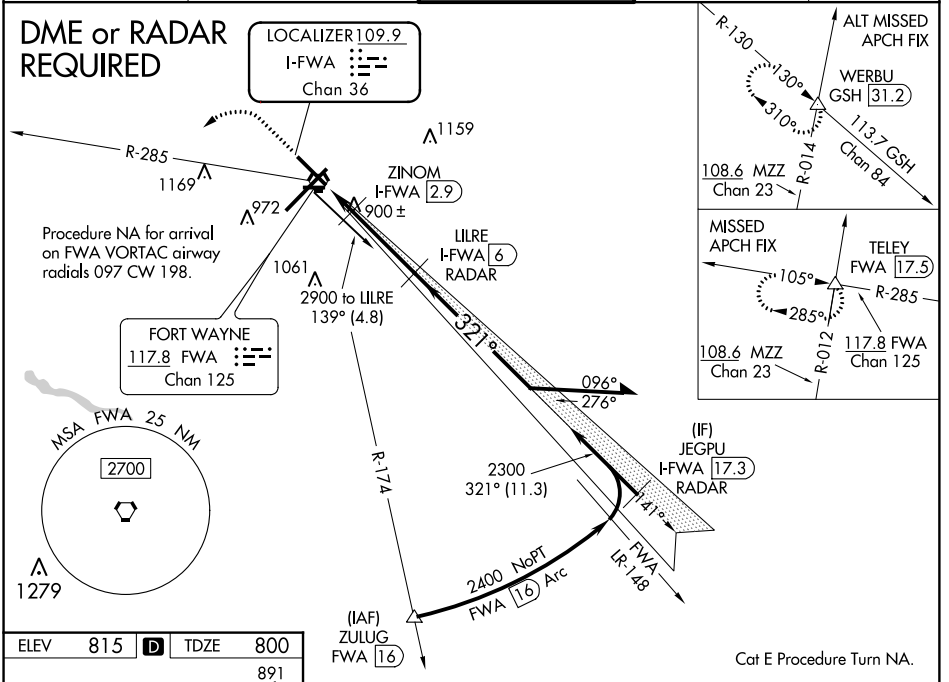


| | | | |
|--|------------------------|-----------------------------|---|
| LOC/DME I-FWA 109.9 Chan 36 | APP CRS 321° | Rwy Idg TDZE Apt Elev | 8001 800 815 |
|--|------------------------|-----------------------------|---|

ILS or LOC RWY 32

FORT WAYNE INTL (FWA)

| | | | | |
|--|--|---|-------------------------------|---------------------------|
| ASR DME required. For inop ALS, increase S-ILS 32 Cat E visibility to RVR 4000, S-LOC 32 Cat E visibility to RVR 6000. Use I-FWA DME when on the localizer course. # RVR 1800 authorized with use of FD or AP or HUD to DA. | MALSR | MISSED APPROACH: Climb to 3000 then left turn on FWA VORTAC R-285 to TELEY INTL/FWA 17.5 DME and hold. | | |
| ATIS 121.25 360.825 | FORT WAYNE APP CON 127.2 284.6 | FORT WAYNE TOWER 119.1 269.325 | GND CON 121.9 348.6 | CLNC DEL 124.75 |



| CATEGORY | A | B | C | D | E |
|-----------------|-----------------------|-------------|-------------------------|-------------------------|-------------------------|
| S-ILS 32 | # 1000/24 200 (200-½) | | | | |
| S-LOC 32 | 1160/24 | 360 (400-½) | 1160/40 360 (400-¾) | | |
| CIRCLING | 1300-1 | 485 (500-1) | 1420-1¾ 605 (700-1¾) | 1520-2¼ 705 (800-2¼) | 1520-2½ 705 (800-2½) |

EC-2, 26 APR 2018 to 24 MAY 2018

EC-2, 26 APR 2018 to 24 MAY 2018