

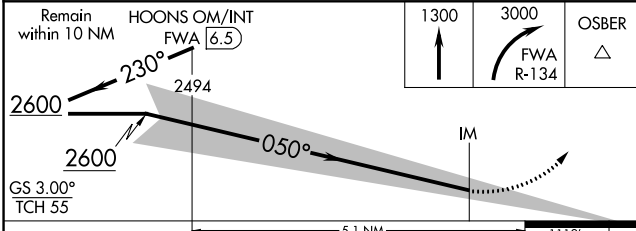
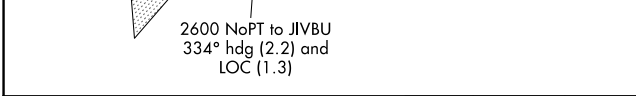
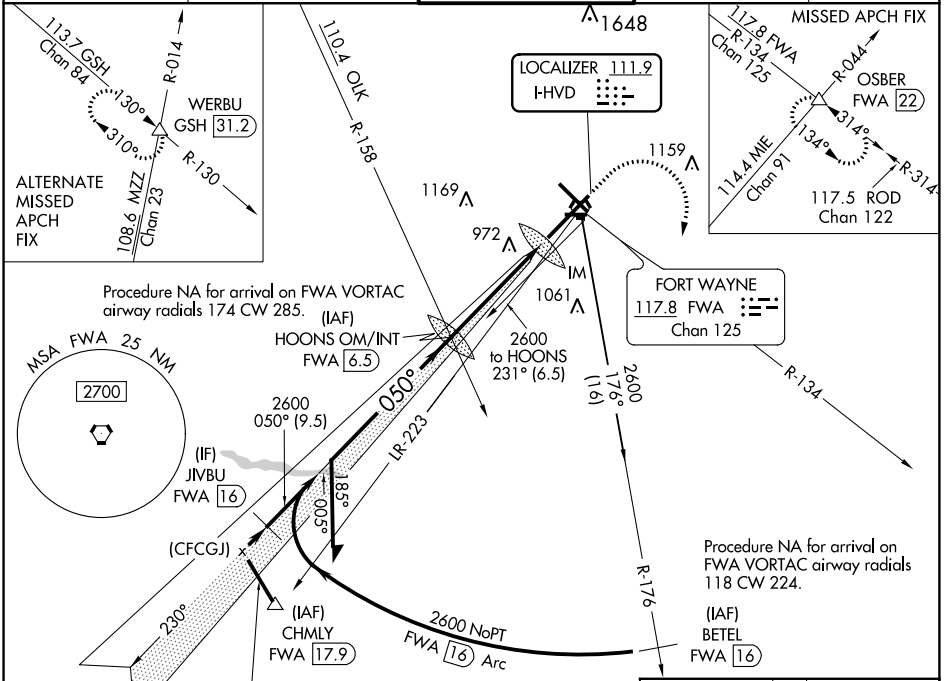
LOC I-HVD <b>111.9</b>	APP CRS <b>050°</b>	Rwy ldg TDZE Apt Elev	<b>11981</b> <b>815</b> <b>815</b>
---------------------------	------------------------	-----------------------------	--

# ILS RWY 5 (CAT II)

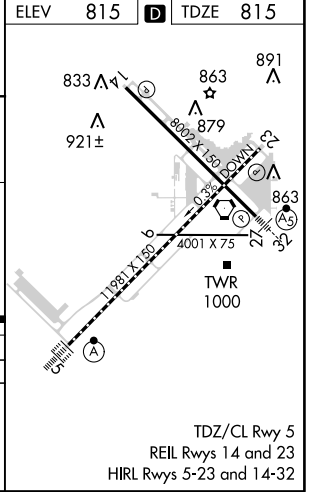
## FORT WAYNE INTL (FWA)

 ASR	ALSF-2	MISSED APPROACH: Climb to 1300 then climbing right turn to 3000 on FWA R-134 to OSBER INT/FWA 22 DME and hold.

ATIS <b>121.25 360.825</b>	FORT WAYNE APP CON <b>127.2 284.6</b>	FORT WAYNE TOWER <b>119.1 269.325</b>	GND CON <b>121.9 348.6</b>	CLNC DEL <b>124.75</b>
-------------------------------	--	--	-------------------------------	---------------------------



CATEGORY	A	B	C	D
S-ILS 5		RA 106/12	100 DA 915	



**CATEGORY II ILS - SPECIAL AIRCREW & AIRCRAFT CERTIFICATION REQUIRED**

EC-2: 26 APR 2018 to 24 MAY 2018

EC-2: 26 APR 2018 to 24 MAY 2018