

WAAS CH 97602 W31A	APP CRS 315°	Rwy Idg TDZE Apt Elev	5900 73 76
--	------------------------	-----------------------------	---------------------------------------

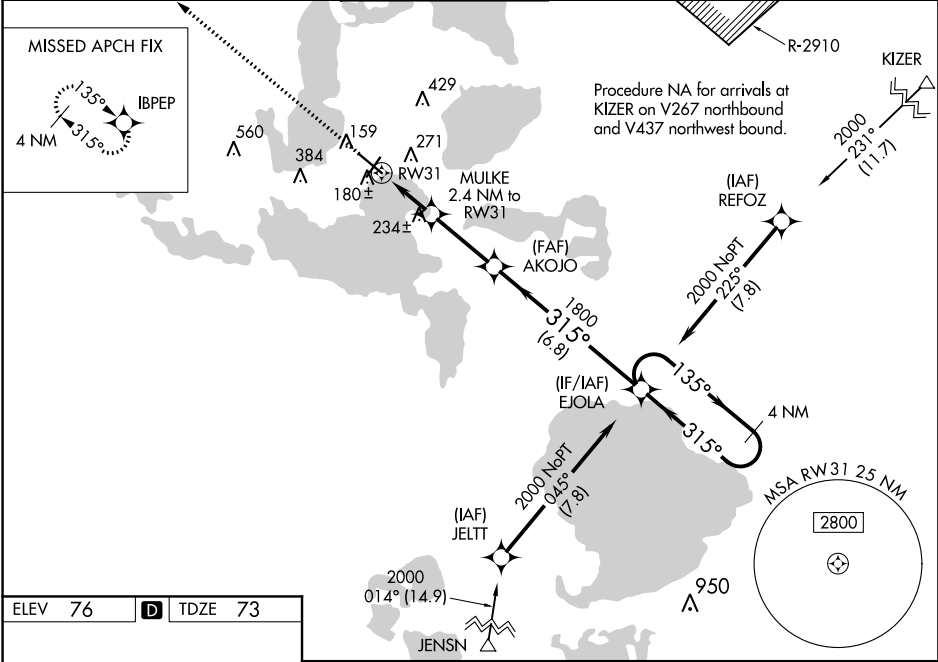
RNAV (GPS) RWY 31

LEESBURG INTL (L.E.E)

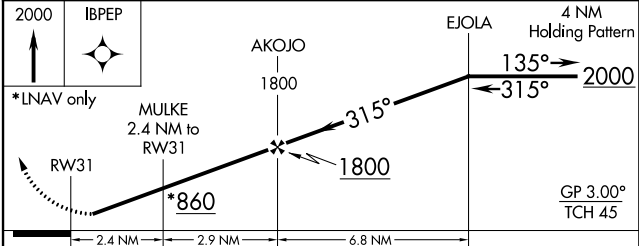
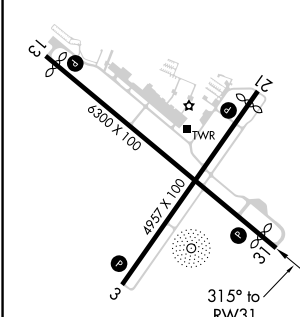
⚠ Baro-VNAV NA when using Orlando Intl altimeter setting. For uncompensated Baro-VNAV systems, LNAV/VNAV NA below -15°C (5°F) or above 43°C (109°F). DME/DME RNP-0.3 NA. Helicopter visibility reduction below 1 SM NA. When local altimeter setting not received, use Orlando Intl altimeter setting and increase all DA 85 feet and all MDA 100 feet; increase LPV all Cats visibility 1/8 mile, increase LNAV/VNAV all Cats, LNAV and Circling Cats C/D visibility 1/4 mile. When VGSI inop, Straight-in/Circling Rwy 31 procedure NA at night. When VGSI inop, Circling Rwy 3 and 21 NA at night.

MISSED APPROACH:
Climb to 2000 direct IBPEP and hold.

ASOS 134.325	ORLANDO APP CON 119.525 351.9	LEESBURG TOWER * 119.35 (CTAF)	GND CON 121.725	GCO 121.725	UNICOM 122.725
------------------------	---	--	---------------------------	-----------------------	--------------------------



ELEV 76	D	TDZE 73
---------	----------	---------



CATEGORY	A	B	C	D
LPV DA		323-1	250 (300-1)	
LNAV/VNAV DA		357-1	284 (300-1)	
LNAV MDA	500-1	427 (500-1)	500-1¼	427 (500-1¼)
CIRCLING	700-1	624 (700-1)	700-1¾	624 (700-1¾)
			700-2	624 (700-2)

REIL Rwy 13 and 31
MIRL Rwy 3-21 and 13-31

SE-3, 29 MAR 2018 to 26 APR 2018

SE-3, 29 MAR 2018 to 26 APR 2018