

WAAS CH <b>77802</b> <b>W13A</b>	APP CRS <b>135°</b>	Rwy Idg TDZE Apt Elev	<b>5500</b> <b>76</b> <b>76</b>
--	------------------------	-----------------------------	---------------------------------------

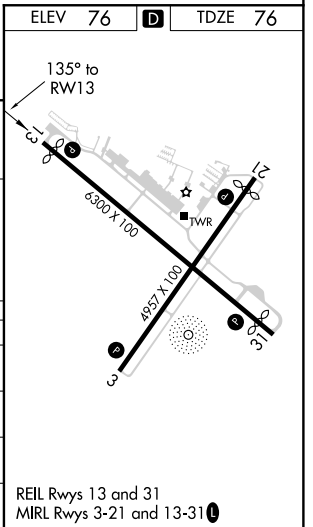
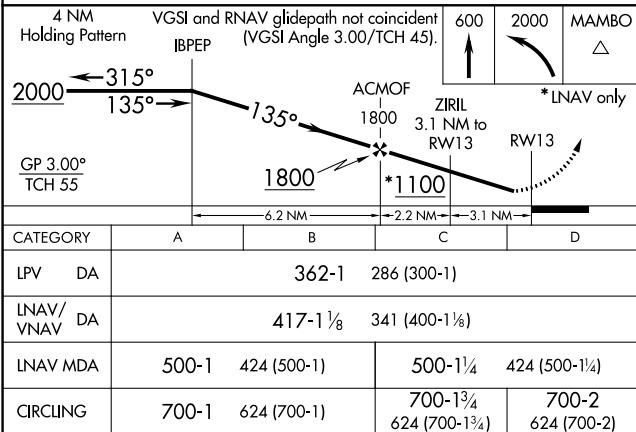
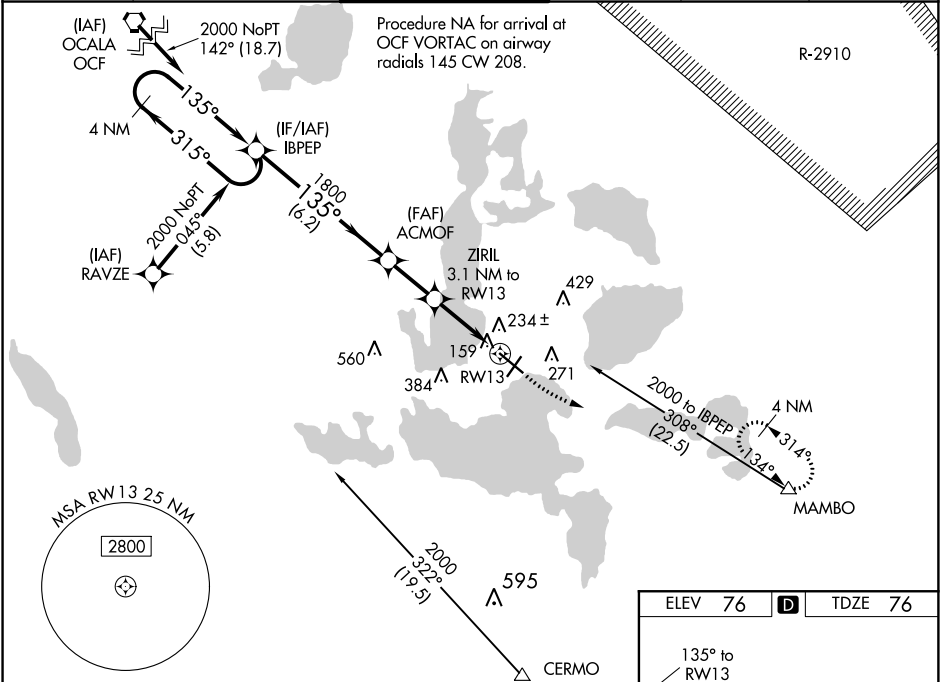
# RNAV (GPS) RWY 13

LEESBURG INTL (L/E)

▼ Baro-VNAV NA when using Orlando Infil altimeter setting. For uncompensated Baro-VNAV systems, LNAV/VNAV NA below -15°C (5°F) or above 43°C (109°F). DME/DME RNP-0.3 NA. Helicopter visibility reduction below 1 SM NA. When local altimeter setting not received, use Orlando Infil altimeter setting and increase all DA 85 feet and all MDA 100 feet; increase LPV and LNAV/VNAV all Cats and LNAV and Circling Cat C and D visibility ¼ mile. When VGSI inop, Straight-in/Circling Rwy 13 procedure NA at night. When VGSI inop, Circling Rwy 3 and 21 NA at night.

▲ MISSED APPROACH: Climb to 600 then climbing left turn to 2000 direct MAMBO and hold.

ASOS <b>134.325</b>	ORLANDO APP CON <b>119.525 351.9</b>	LEESBURG TOWER * <b>119.35 (CTAF)</b>	GND CON <b>121.725</b>	GCO <b>121.725</b>	UNICOM <b>122.725</b>
------------------------	---	--	---------------------------	-----------------------	--------------------------



SE-3, 29 MAR 2018 to 26 APR 2018

SE-3, 29 MAR 2018 to 26 APR 2018