

WAAS CH <b>50302</b> <b>W30A</b>	APP CRS <b>302°</b>	Rwy Idg <b>4238</b> TDZE <b>54</b> Apt Elev <b>66</b>
--	------------------------	---

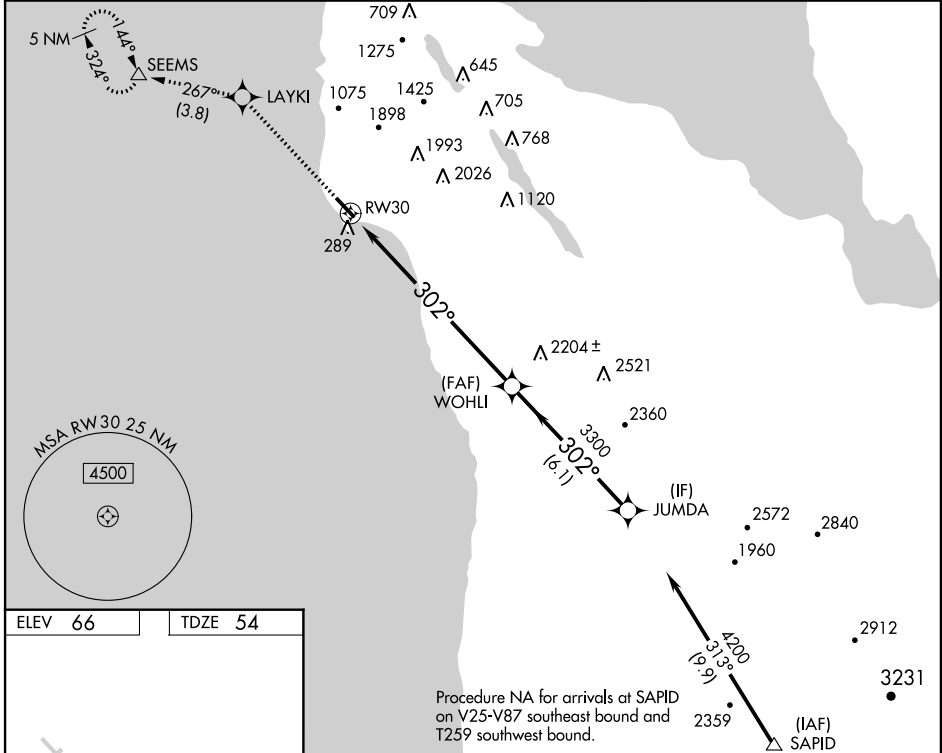
# RNAV (GPS) Z RWY 30

HALF MOON BAY (HAF)

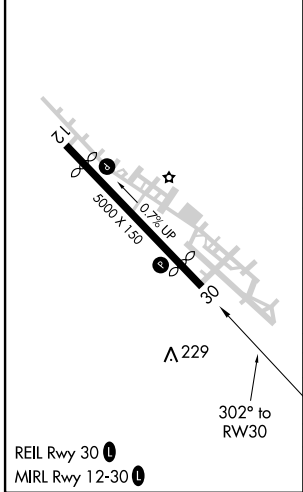
**NA** DME/DME RNP-0.3 NA.  
When local altimeter setting not received, use San Francisco Intl altimeter setting.

MISSED APPROACH: Climb to 6000 direct LAYKI and on track 267° to SEEMS and hold, continue climb-in-hold to 6000.

AWOS <b>127.275</b>	NORCAL APP CON <b>135.1 307.2</b>	UNICOM <b>122.8 (CTAF)</b>
------------------------	--------------------------------------	-------------------------------



ELEV 66	TDZE 54
---------	---------



6000	LAYKI	tr 267°	SEEMS	JUMDA
VGSI and RNAV glidepath not coincident (VGSI Angle 3.00/TCH 24).				
	RWY 30		WOHLI	JUMDA
		8.5 NM	6.1 NM	
CATEGORY	A	B	C	D
LPV DA	363-1	309 (300-1)		NA
SAN FRANCISCO ALTIMETER SETTING MINIMUMS				
LPV DA	391-1	337 (400-1)		NA

SW-2, 29 MAR 2018 to 26 APR 2018

SW-2, 29 MAR 2018 to 26 APR 2018