

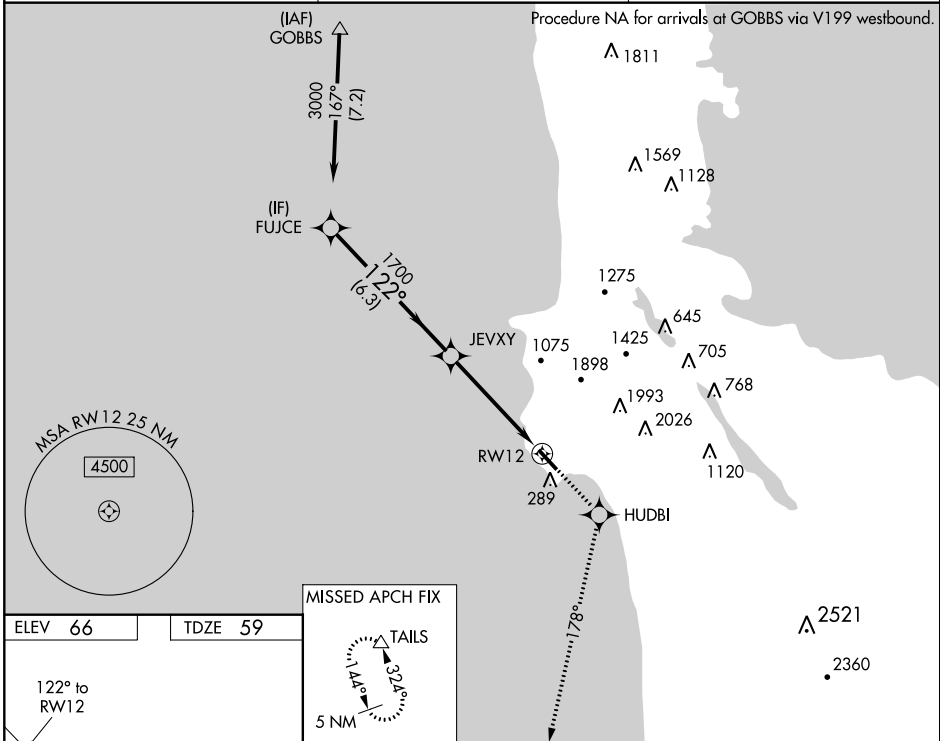
WAAS CH 93802 W12A	APP CRS 122°	Rwy ldg 4248 TDZE 59 Apt Elev 66
---------------------------------	------------------------	---

RNAV (GPS) Z RWY 12

HALF MOON BAY (HAF)

<p>V NA DME/DME RNP-0.3 NA. When local altimeter setting not received, use San Francisco Intl altimeter setting. Helicopter visibility reduction below 3/4 SM NA.</p>	<p>MISSED APPROACH: Climb to 6000 direct HUDBI and via 178° track to TAILS and hold, continue climb-in-hold to 6000.</p>
---	--

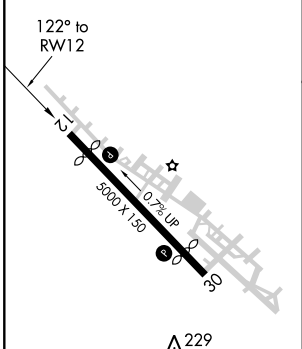
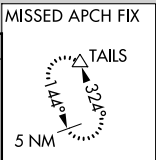
AWOS 127.275	NORCAL APP CON 135.1 307.2	UNICOM 122.8 (CTAF)
------------------------	--------------------------------------	-------------------------------



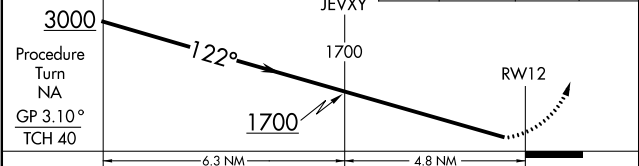
SW-2, 29 MAR 2018 to 26 APR 2018

SW-2, 29 MAR 2018 to 26 APR 2018

ELEV 66	TDZE 59
---------	---------



<p>VGSI and RNAV glidepath not coincident (VGSI Angle 3.00/TCH 24).</p> <p>FUJCE</p>	6000	HUDBI	178° tr	TAILS
--	------	-------	---------	-------



CATEGORY	A	B	C	D
LPV DA	395-1¼	336 (400-1¼)		NA
SAN FRANCISCO ALTIMETER SETTING MINIMUMS				
LPV DA	423-1¼	364 (400-1¼)		NA

REIL Rwy 30 **1**
MIRL Rwy 12-30 **1**