

WAAS CH <b>53317</b> <b>W22A</b>	APP CRS <b>223°</b>	Rwy Idg TDZE <b>429</b> Apt Elev <b>429</b>	<b>4000</b>
--	------------------------	---	-------------

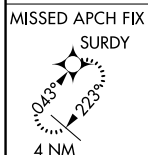
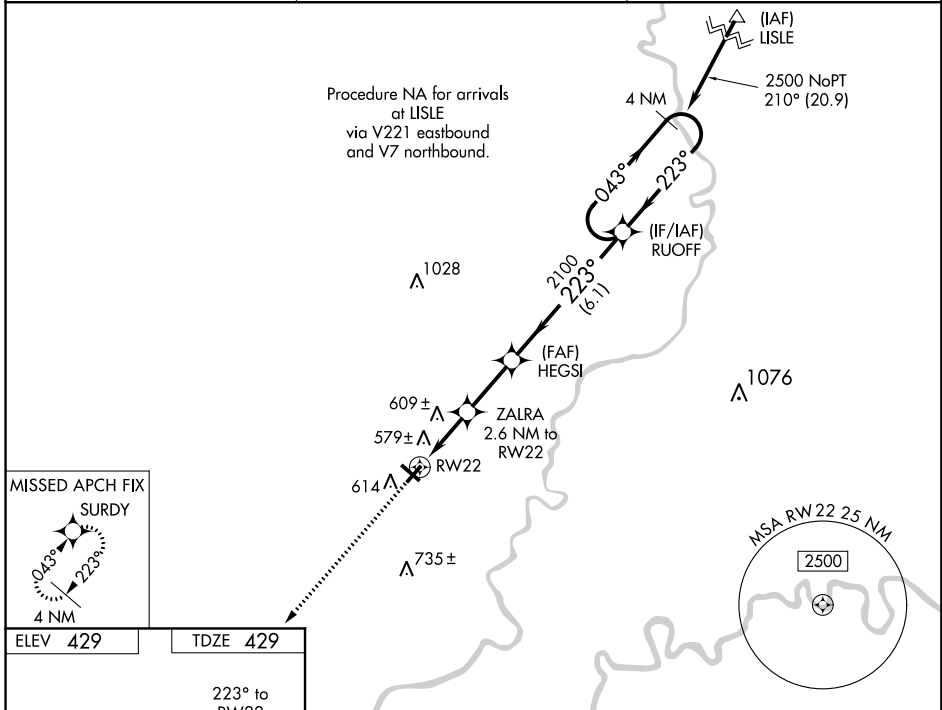
# RNAV (GPS) RWY 22

MOUNT CARMEL MUNI (AJG)

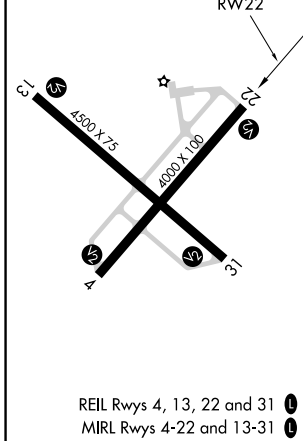
**⚠** When VGSI inoperative, Straight-in/Circling Rwy 22 procedure NA at night. When VGSI inoperative, Circling Rwy 4 NA at night. Baro-VNAV NA when using Lawrenceville altimeter setting. For uncompensated Baro-VNAV systems, LNAV/VNAV NA below -15°C (5°F) or above 54°C (130°F). DME/DME RNP-0.3 NA. Visibility reduction by helicopters NA. When local altimeter setting not received, use Lawrenceville altimeter setting and increase all DA 26 feet and all MDA 40 feet.

**MISSED APPROACH:**  
Climb to 2500 direct SURDY and hold.

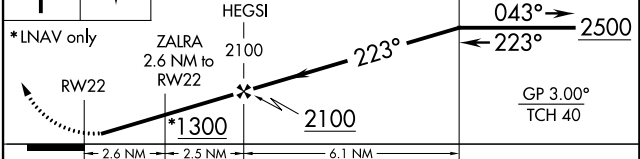
AWOS-3 <b>134.9</b>	EVANSVILLE APP CON* <b>125.6 343.7</b>	UNICOM <b>122.7 (CTAF) 0</b>
------------------------	---	---------------------------------



ELEV <b>429</b>	TDZE <b>429</b>
-----------------	-----------------



2500 SURDY VGSI and RNAV glidepath not coincident (VGSI Angle 3.00/TCH 22). 4 NM Holding Pattern RUOFF



CATEGORY	A	B	C	D
LPV DA	679-1 250 (300-1)			NA
LNAV/VNAV DA	888-1¾ 459 (500-1¾)			NA
LNAV MDA	860-1	431 (500-1)	860-1¼ 431 (500-1¼)	NA
CIRCLING	980-1	551 (600-1)	980-1½ 551 (600-1½)	NA