

WAAS CH 58236 W10A	APP CRS 102°	Rwy Idg 5350 TDZE 28 Apt Elev 28
--	------------------------	---

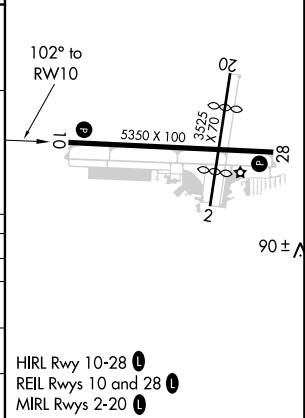
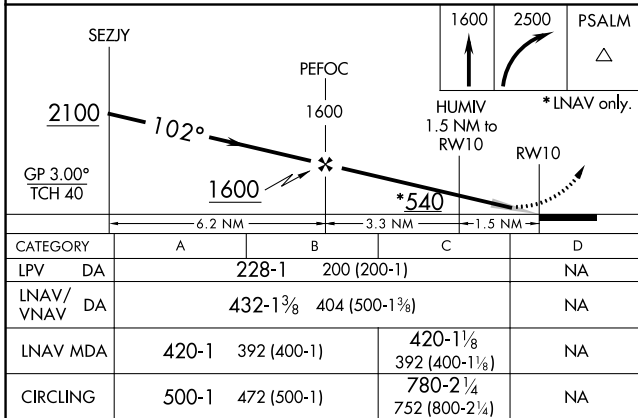
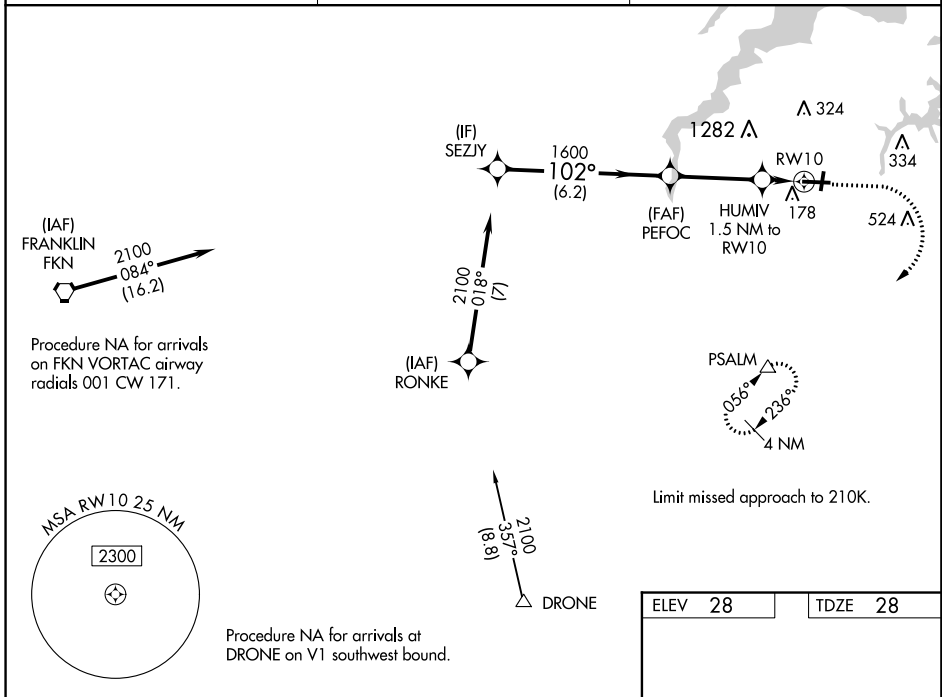
RNAV (GPS) RWY 10

HAMPTON ROADS EXECUTIVE (PVG)

⚠ Baro-VNAV NA when using Norfolk Intl altimeter setting. For uncompensated Baro-VNAV systems, LNAV/VNAV NA below -15°C (5°F) or above 54°C (130°F). DME/DME RNP-0.3 NA. When local altimeter setting not received, use Norfolk Intl altimeter setting and increase all DA 33 feet and all MDA 40 feet; increase LNAV/VNAV all Cats visibility and LNAV Cat C visibility 1/8 mile. Circling NA for Cat C N of Rwy 10-28. Circling NA to Rwy 2 and 20. Helicopter visibility reduction below 1 SM NA.

MISSED APPROACH:
Climb to 1600 then climbing right turn to 2500 direct PSALM and hold.

AWOS-3PT 118.375	NORFOLK APP CON 118.9 353.7	UNICOM 122.725 (CTAF) 0
----------------------------	---------------------------------------	-----------------------------------



NE-3, 29 MAR 2018 to 26 APR 2018

NE-3, 29 MAR 2018 to 26 APR 2018