

WAAS CH <b>86928</b> <b>W17A</b>	APP CRS <b>147°</b>	Rwy Idg TDZE Apt Elev	<b>3695</b> <b>379</b> <b>388</b>
--	------------------------	-----------------------------	---

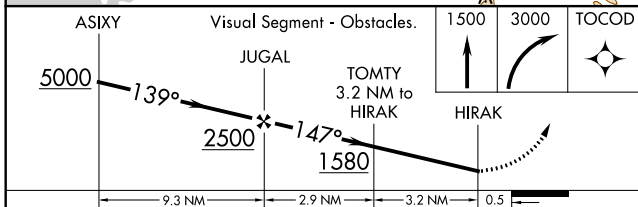
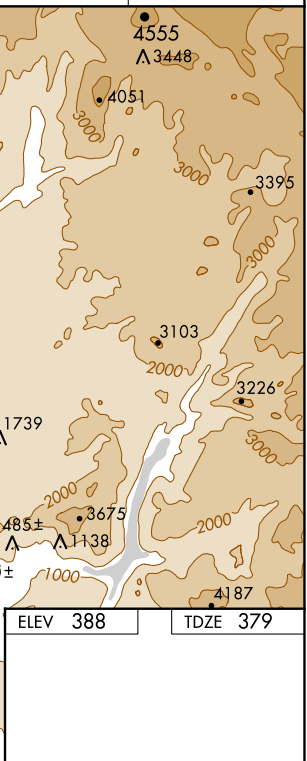
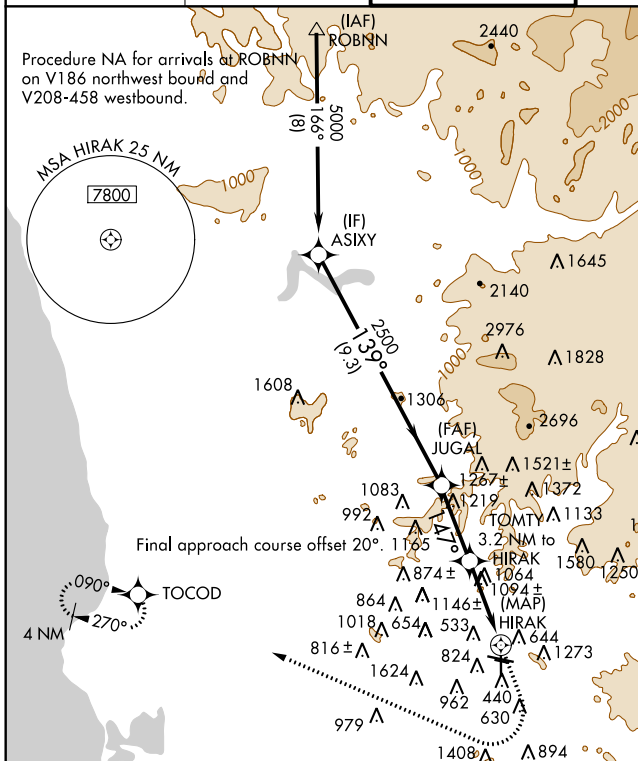
# RNAV (GPS) RWY 17

GILLESPIE FIELD (SEE)

**⚠** Circling NA NE of Rwy 17 and 27R. DME/DME RNP-0.3 NA. When local altimeter setting not received, use Miramar MCAS altimeter setting and increase all MDA 40 feet. Helicopter visibility reduction below 1 SM NA. Night landing: Rwy 9L, 9R, 27L, 27R, 35 NA.

**MISSED APPROACH:** Climb to 1500 then climbing right turn to 3000 direct TOCOD and hold.

ATIS <b>125.45</b>	SOCAL APP CON <b>124.35 279.625</b>	GILLESPIE TOWER* <b>120.7(CTAF) 257.8</b>	GND CON <b>121.7</b>	CLNC DEL <b>125.1</b>
-----------------------	--	--	-------------------------	--------------------------



CATEGORY	A	B	C	D
LP MDA	1360-1¼ 981 (1000-1¼)	1360-1½ 981 (1000-1½)	1360-3	981 (1000-3)
LNAV MDA	1380-1¼ 1001 (1000-1¼)	1380-1½ 1001 (1000-1½)	1380-3	1001 (1000-3)
CIRCLING	1440-1¼ 1052 (1100-1¼)	1440-1½ 1052 (1100-1½)	1440-3	1052 (1100-3)

ELEV 388 TDZE 379

MIRL Rwy 9L-27R and 17-35  
REIL Rwy 27R

SW-3, 29 MAR 2018 to 26 APR 2018

SW-3, 29 MAR 2018 to 26 APR 2018