

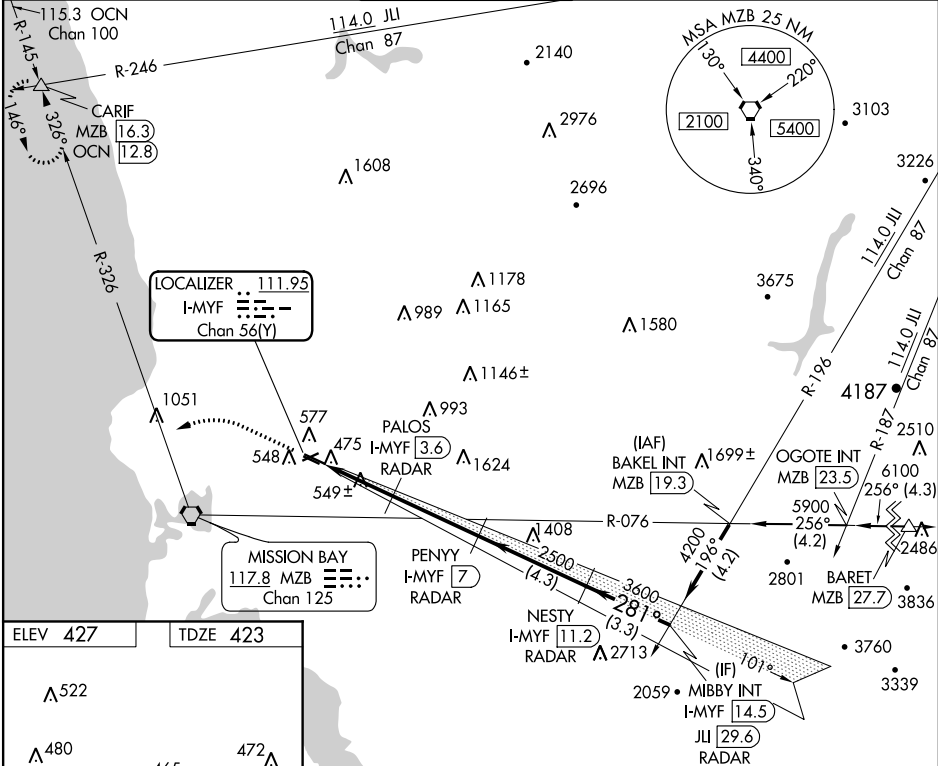
LOC/DME I-MYF 111.95 Chan 56(Y)	APP CRS 281°	Rwy Idg 3401 TDZE 423 Apt Elev 427
---	------------------------	---

ILS or LOC RWY 28R
MONTGOMERY-GIBBS EXECUTIVE (MYF)

▼ DME or RADAR required. VDP NA with San Diego Intl altimeter setting.
▲ When local altimeter setting not received, use San Diego Intl altimeter setting and increase all DA 71 feet and all MDA 80 feet.
 For inoperative MALS when using San Diego Intl altimeter setting, increase S-ILS 28R all Cats visibility to 1 mile.

MALS MISSED APPROACH: Climb to 1100 then climbing left turn to 3000 via heading 270° and MZB VORTAC R-326 to CARIF INT/MZB 16.3 DME and hold.

ATIS 126.9	SOCAL APP CON 124.35 279.625	MONTGOMERY TOWER* 119.2 (CTAF) 0 269.4	GND CON 118.225	CLNC DEL 123.725	SAN DIEGO RADIO 122.4
----------------------	--	--	---------------------------	----------------------------	---------------------------------



SW-3, 29 MAR 2018 to 26 APR 2018

SW-3, 29 MAR 2018 to 26 APR 2018

ELEV 427	TDZE 423
REIL Rwy 28L	
MIRL Rwy 10L-28R	
FAF to MAP 6.3 NM	
Knots	60 90 120 150 180
Min:Sec	6:18 4:12 3:09 2:31 2:06

1100	3000	MZB R-326	CARIF		
↑	hdg 270°				
*LOC only		PENNY I-MYF (7) RADAR	NESTY I-MYF (11.2) RADAR	MIBBY INT I-MYF (14.5) RADAR	Procedure Turn NA
I-MYF (0.7)	*I-MYF (1.7)	PALOS I-MYF (3.6) RADAR	2500	281° 4200	
			1380*	3600	
			2500		GS 3.00° TCH 41
			1.1 NM	1.9 NM	3.4 NM
			4.3 NM	3.3 NM	
CATEGORY	A	B	C	D	
S-ILS 28R	623-½	200 (200-½)		NA	
S-LOC 28R	800-½	377 (400-½)		NA	
CIRCLING	880-1	453 (500-1)		NA	