

WAAS CH <b>63039</b> W02A	APP CRS <b>027°</b>	Rwy Idg TDZE <b>6303</b> Apt Elev <b>6349</b>
---------------------------------	------------------------	---

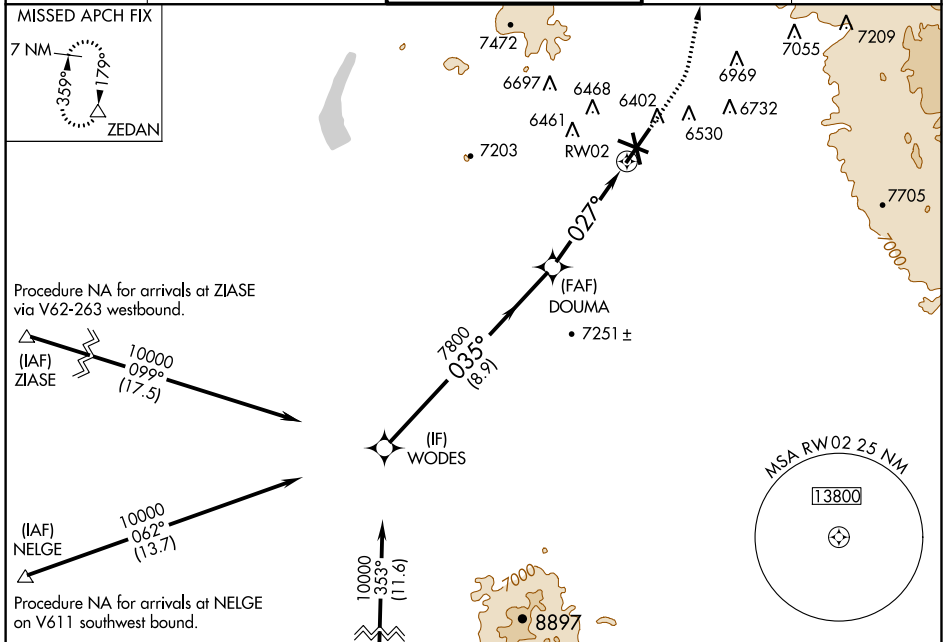
# RNAV (GPS) RWY 2

SANTA FE MUNI (SAF)

**▽** For uncompensated Baro-VNAV systems, LNAV/VNAV NA below -18°C (0°F) or above 45°C (113°F). DME/DME RNP-0.3 NA.

**▲** MISSED APPROACH: Climb to 7300 then climbing left turn to 11000 direct ZEDAN and hold.

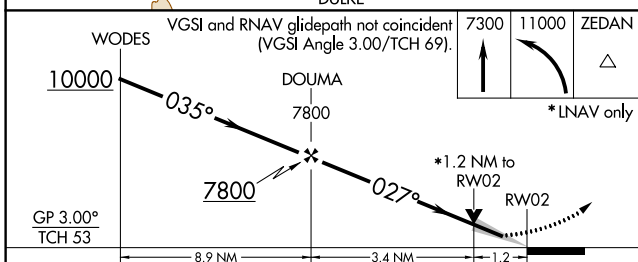
ATIS <b>128.55</b>	ALBUQUERQUE CENTER <b>132.8 346.35</b>	SANTA FE TOWER ★ <b>119.5 (CTAF) 239.3</b>	GND CON <b>121.7</b>	UNICOM <b>122.95</b>
-----------------------	---	---	-------------------------	-------------------------



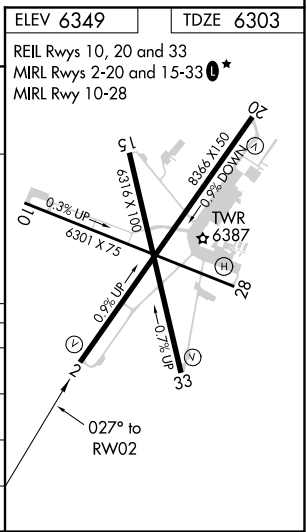
Procedure NA for arrivals at ZIASE via V62-263 westbound.

Procedure NA for arrivals at NELGE on V611 southwest bound.

Procedure NA for arrivals at DULKE on V190 southwest bound.



CATEGORY	A	B	C	D
LPV DA		6503-¾	200 (200-¾)	
LNAV/VNAV DA		6553-7/8	250 (300-7/8)	
LNAV MDA	6740-1	437 (400-1)	6740-1¼	437 (400-1¼)
<b>C</b> CIRCLING	6800-1 451 (500-1)	6920-1 571 (600-1)	7340-3 991 (1000-3)	7660-3 1311 (1400-3)



SW-1, 29 MAR 2018 to 26 APR 2018

SW-1, 29 MAR 2018 to 26 APR 2018