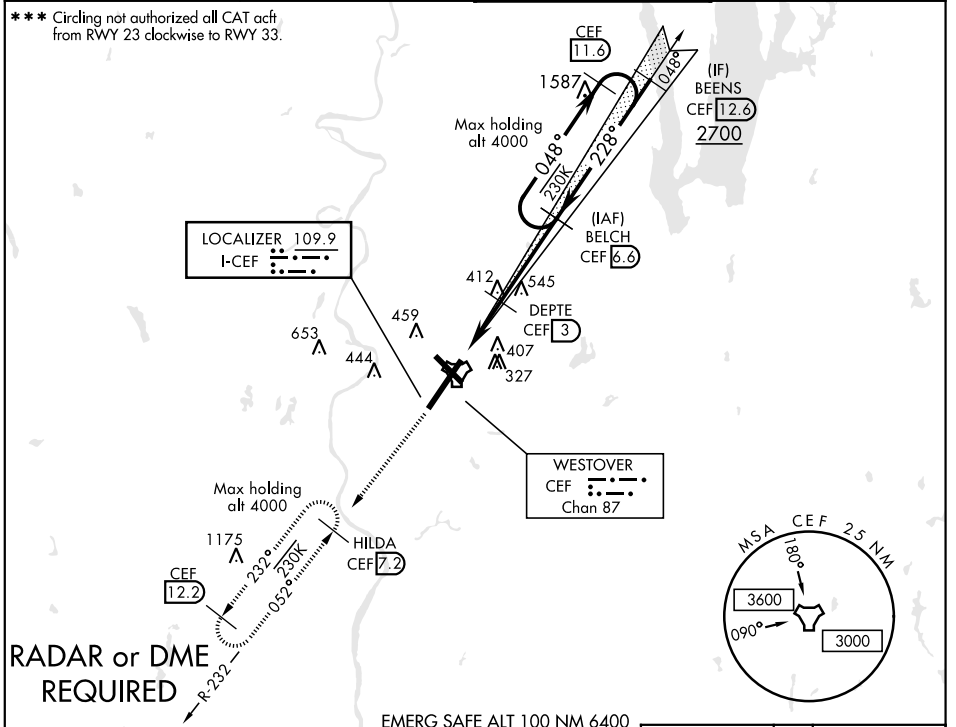


ILS or LOC RWY 23

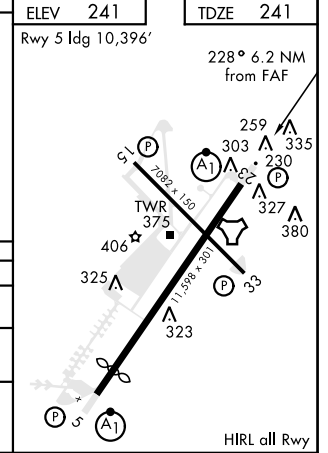
| | | | | |
|--|-------------------------|--|---------------|--|
| LOC I-CEF 109.9 | APCH CRS 228° | Rwy ldg 11,598 TDZE 241 Arpt Elev 241 | AL-447 [USAF] | WESTOVER ARB METROPOLITAN (KCEF) |
| ▼ * When ALS inop, increase RVR to 40 and vis to ¼ mile. ** When ALS inop, increase CAT AB RVR to 55 and vis to 1 mile, CAT CDE vis to 1 ½ miles. | | | ALSF-1 | MISSED APPROACH: Climb to 2500 via CEF R-232 to HILDA and hold. Expect radar vectors |

| | | | |
|--------------------------|--|---|--------------------------------|
| ATIS ★ 127.525 | BRADLEY APP CON 125.35 281.5 | WESTOVER TOWER ★ 134.85 (CTAF) 348.75 | GND CON 118.35 275.8 |
|--------------------------|--|---|--------------------------------|



EMERG SAFE ALT 100 NM 6400

| 2500 ↑ CEF R-232 | HILDA CEF 7.2 | ↑ LOC ONLY | BELCH 6.6 | 048° → | 2700 |
|---|--------------------|----------------|--------------------|------------------|------------------|
| TACAN | ZODER 9 | DEPTTE 3 | 1020 | 228° ← | |
| VGSIs and descent angles not coincident | | | | | |
| GS 3.00° TCH 46 | | | | | |
| .5 NM 2.1 NM 3.6 NM | | | | | |
| CATEGORY | A | B | C | D | E |
| S-ILS 23 * | 441/24 | | 200 | (200-½) | |
| S-LOC 23 ** | 760/24 519 (600-½) | | 760/55 519 (600-1) | | |
| *** | 780-1 | 800-1 | 820-1 ½ | 960-2 ¼ | 980-2 ½ |
| ☑ CIRCLING | 539 (600-1) | 559 (600-1) | 579 (600-1 ½) | 719 (800-2 ¼) | 739 (800-2 ½) |



ILS or LOC RWY 23

NE-1, 29 MAR 2018 to 26 APR 2018

NE-1, 29 MAR 2018 to 26 APR 2018