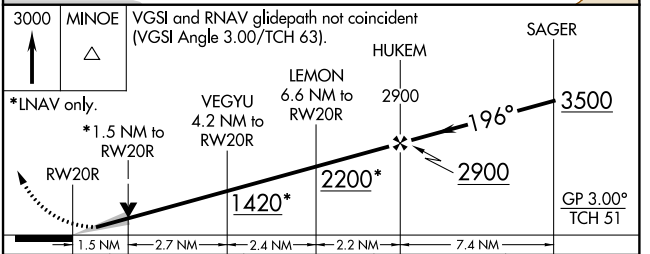
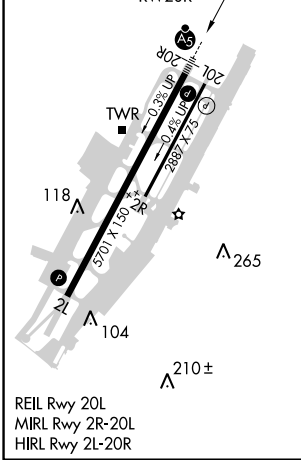
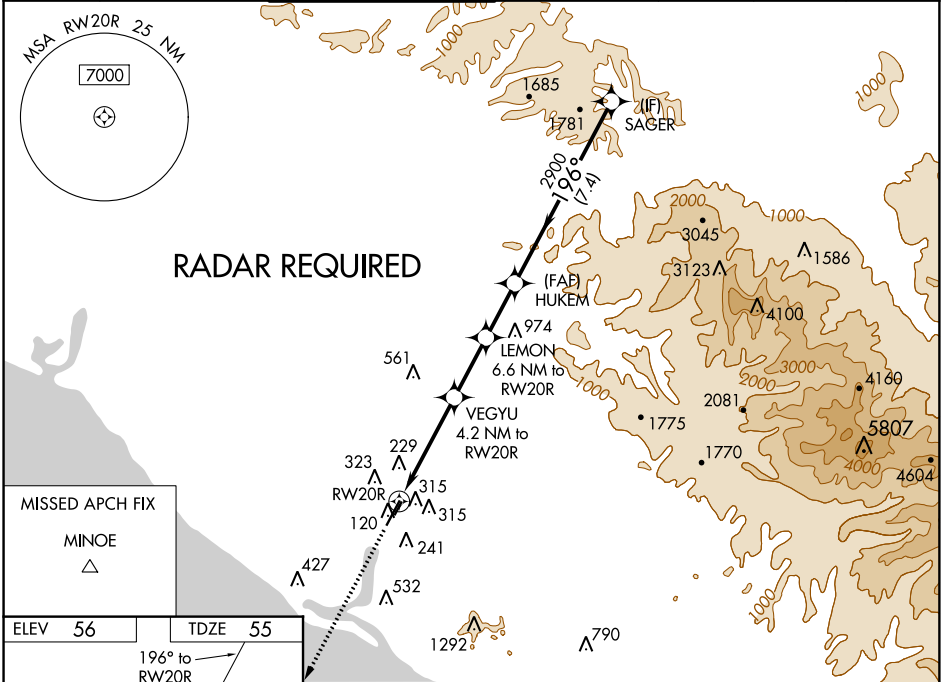


WAAS CH 99502 W20A	APP CRS 196°	Rwy Idg TDZE 55 Apt Elev 56	5701
--	------------------------	---	-------------

RNAV (GPS) Y RWY 20R

JOHN WAYNE AIRPORT-ORANGE COUNTY (SNA)

<p>▼ For uncompensated Baro-VNAV systems, LNAV/VNAV NA below 5°C (41°F) or above 54°C (130°F). DME/DME RNP-0.3 NA. # RVR 1800 authorized with use of FD or AP or HUD to DA.</p>		<p>MALSR</p>	<p>MISSED APPROACH: Climb to 3000 direct MINOE.</p>			
D-ATIS 126.0	SOCAL APP CON 121.3 263.1	JOHN WAYNE TOWER * 126.8 (CTAF) 0 379.9	GND CON (EAST) 120.8 (WEST) 132.25	CLNC DEL 118.0	CPDLC	UNICOM 122.95



CATEGORY	A	B	C	D
LPV DA#	255/24		200 (200-½)	
LNAV/VNAV DA	516/60		461 (500-1¼)	
LNAV MDA	580/24	525 (600-½)	580/55	525 (600-1¼)
<input checked="" type="checkbox"/> CIRCLING	640-1	584 (600-1)	840-2¼ 784 (800-2¼)	1160-3 1104 (1200-3)

SW-3, 29 MAR 2018 to 26 APR 2018

SW-3, 29 MAR 2018 to 26 APR 2018