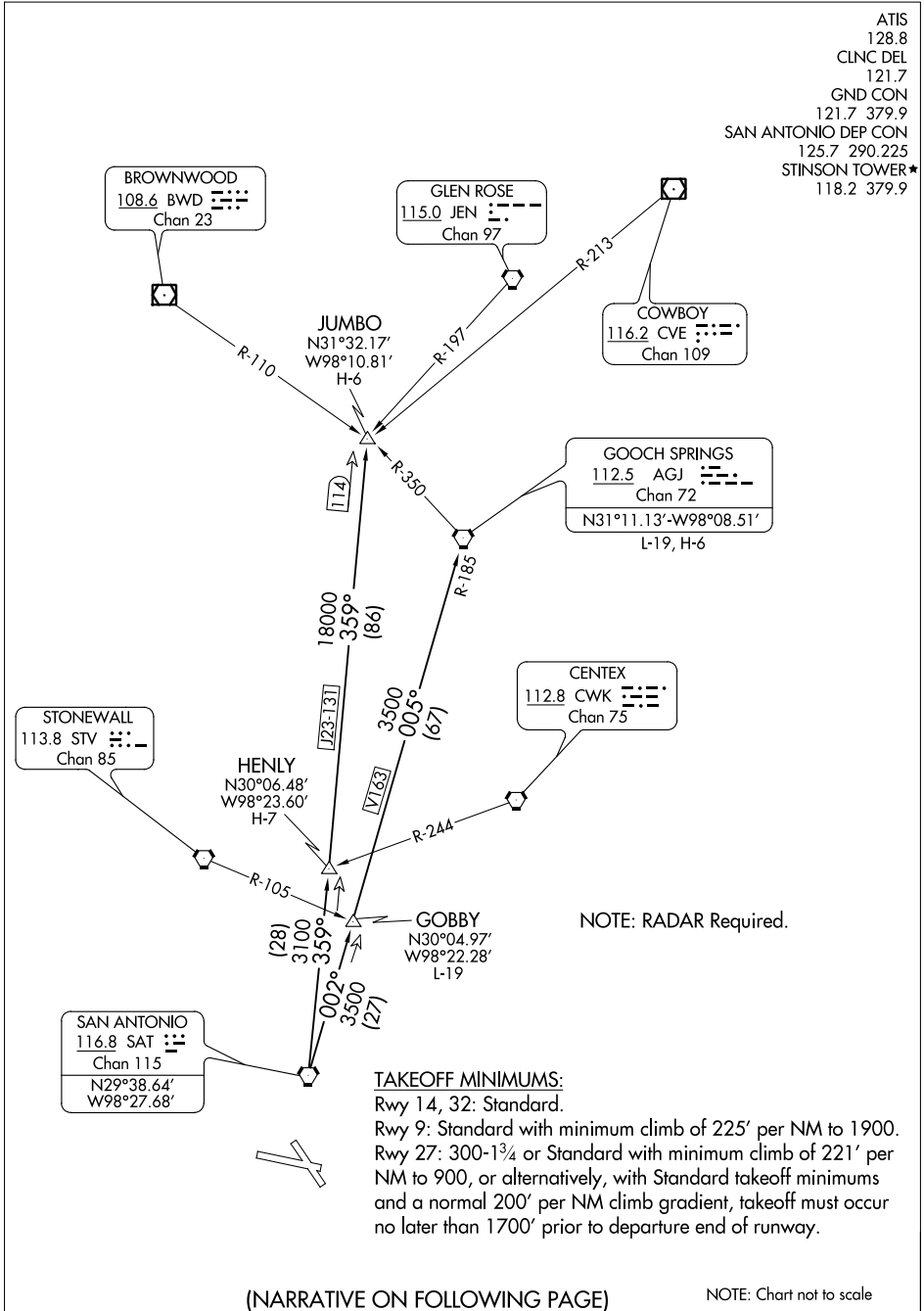


ALAMO TWO DEPARTURE

ATIS 128.8
 CLNC DEL 121.7
 GND CON 121.7 379.9
 SAN ANTONIO DEP CON 125.7 290.225
 STINSON TOWER* 118.2 379.9



SC-3, 29 MAR 2018 to 26 APR 2018

SC-3, 29 MAR 2018 to 26 APR 2018

TAKEOFF MINIMUMS:

Rwy 14, 32: Standard.
 Rwy 9: Standard with minimum climb of 225' per NM to 1900.
 Rwy 27: 300-1³/₄ or Standard with minimum climb of 221' per NM to 900, or alternatively, with Standard takeoff minimums and a normal 200' per NM climb gradient, takeoff must occur no later than 1700' prior to departure end of runway.

(NARRATIVE ON FOLLOWING PAGE)

NOTE: Chart not to scale

ALAMO TWO DEPARTURE