


LOC/DME I-SLE 110.3 Chan 40	APP CRS 133°	Rwy Idg TDZE Apt Elev 5811 204 214
--	------------------------	--

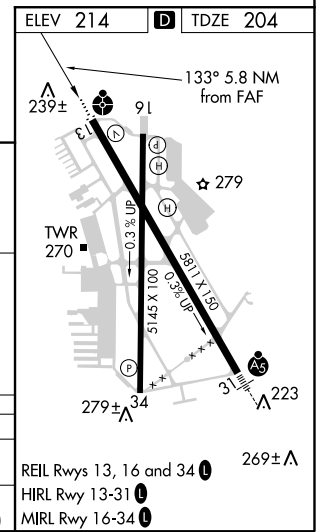
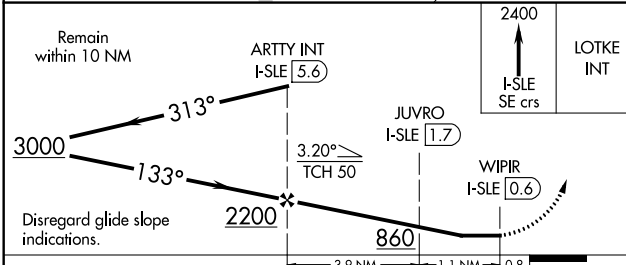
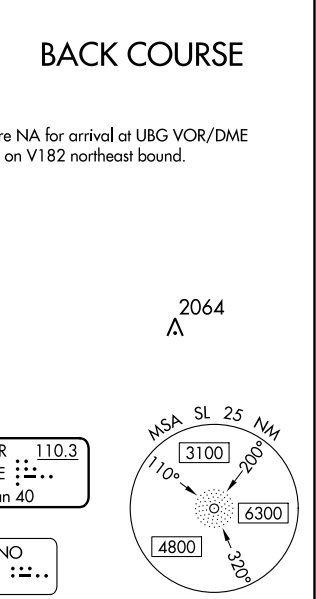
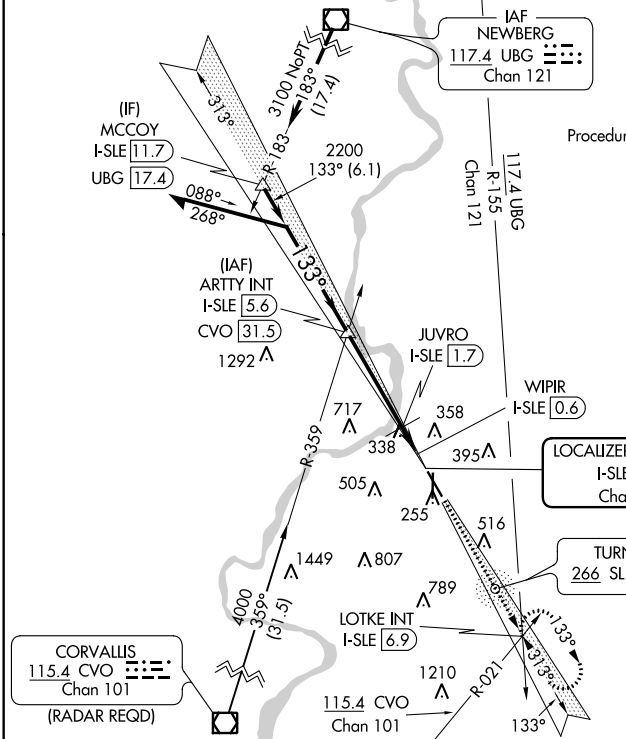
LOC BC RWY 13

MCNARY FIELD (SLE)

When local altimeter setting not received, use Mc Minnville altimeter setting:
 Increase all MDA 60 feet; increase S-13 Cat C/D visibility to 1 1/8 SM and Circling Cat C visibility to 2 1/2 SM. For inop ALS, increase S-13 Cat C and D visibility to 1 1/8 SM. For inop ALS when using Mc Minnville altimeter setting, increase S-13 Cat D visibility to 1 3/8 SM. Rwy 13 helicopter visibility reduction below 3/4 SM NA DME required. Rwy 34 helicopter visibility reduction below 1 SM NA.

ODALS

 MISSED APPROACH: Climb to 2400 on I-SLE Localizer SE course to LOTKE INT/ I-SLE 6.9 DME and hold.

ATIS 124.55	SEATTLE CENTER 125.8 291.7	SALEM TOWER ★ 119.1 (CTAF) 0 257.2	GND CON 121.9	UNICOM 122.95
-----------------------	--------------------------------------	--	-------------------------	-------------------------



CATEGORY	A	B	C	D
S-13	600-3/4 396 (400-3/4)		600-1 396 (400-1)	
CIRCLING	900-1 686 (700-1)	940-1 726 (800-1)	1000-2 1/4 786 (800-2 1/4)	1260-3 1046 (1100-3)

NW-1, 29 MAR 2018 to 26 APR 2018

NW-1, 29 MAR 2018 to 26 APR 2018