

18032

AIRPORT DIAGRAM

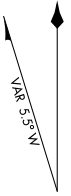
AL-156 (FAA)

FORT WAYNE INTL (FWA)
FORT WAYNE, INDIANA

ATIS
 121.25 360.825
 FORT WAYNE TOWER
 119.1 269.325
 GND CON
 121.9 348.6
 CLNC DEL
 124.75

D

41°00'N



JANUARY 2015
 ANNUAL RATE OF CHANGE
 0.1° W

40°59'N

NON MOVEMENT
 AREA

EC-2: 29 MAR 2018 to 26 APR 2018

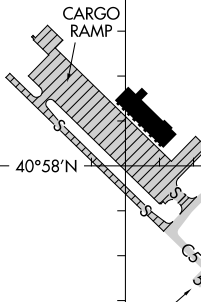
EC-2: 29 MAR 2018 to 26 APR 2018

40°58'N

85°13'W

85°12'W

85°11'W

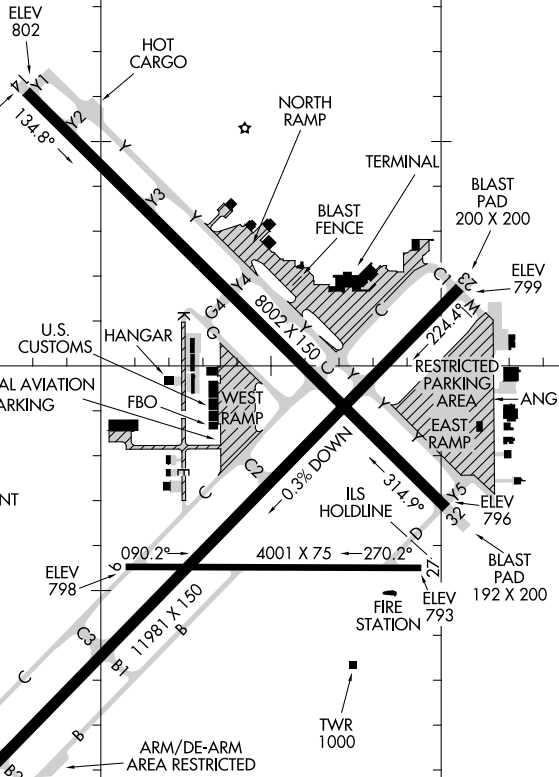


BLAST
 PAD
 200 X 150

FIELD
 ELEV
 815

CAUTION: BE ALERT TO
 RUNWAY CROSSING CLEARANCES.
 READBACK OF ALL RUNWAY
 HOLDING INSTRUCTIONS IS REQUIRED.

RWY 05-23
 PCN 59 R/C/W/T
 S-100, D-190, 2D-355, 2D/2D2-780
 RWY 09-27
 PCN 35 F/C/W/U
 S-100, D-190, 2D-215, 2D/2D2-430
 RWY 14-32
 PCN 54 F/C/W/T
 S-100, D-190, 2D-215, 2D/2D2-430



ELEV 802
 HOT CARGO
 NORTH RAMP
 TERMINAL
 BLAST PAD 150 X 150
 134.8°
 BLAST PAD 200 X 200
 ELEV 799
 RESTRICTED PARKING AREA
 U.S. CUSTOMS
 HANGAR
 FBO
 WEST RAMP
 EAST RAMP
 224.8°
 0.3% DOWN
 314.9°
 ILS HOLDLINE
 090.2°
 4001 X 75
 270.2°
 ELEV 798
 11981 X 150
 044.4°
 BLAST PAD 192 X 200
 ELEV 796
 BLAST PAD 200 X 200
 ELEV 793
 FIRE STATION
 TWR 1000
 ARM/DE-ARM AREA RESTRICTED
 GENERAL AVIATION PARKING
 U.S. CUSTOMS
 HANGAR
 FBO
 WEST RAMP
 EAST RAMP
 RESTRICTED PARKING AREA
 ANG

AIRPORT DIAGRAM

18032

FORT WAYNE, INDIANA
FORT WAYNE INTL (FWA)