

WAAS CH <b>63022</b> <b>W06A</b>	APP CRS <b>067°</b>	Rwy Idg TDZE Apt Elev	<b>5500</b> <b>665</b> <b>665</b>
--	------------------------	-----------------------------	---

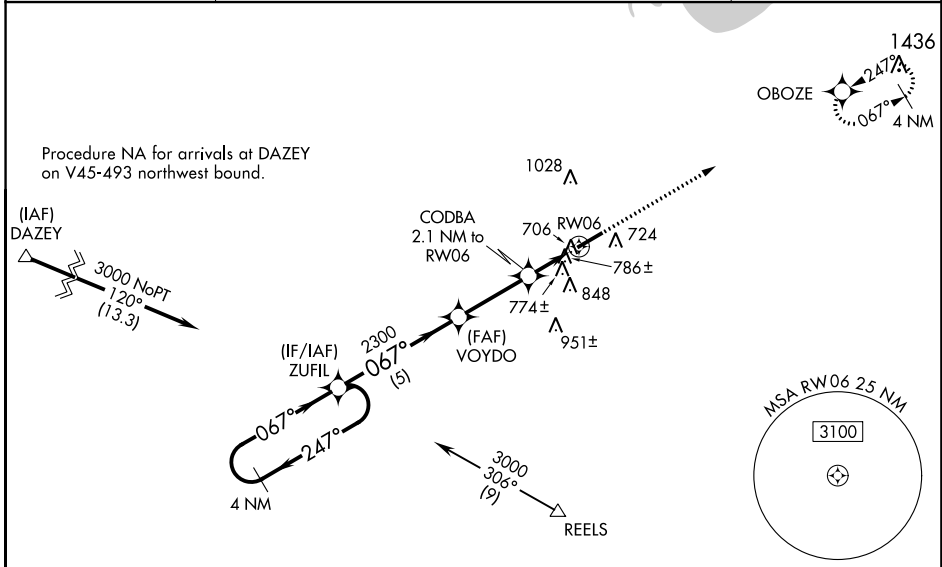
# RNAV (GPS) RWY 6

SANDUSKY COUNTY RGNL (S24)

**NA** For uncompensated Baro-VNAV systems, LNAV/VNAV NA below -16°C (4°F) or above 54°C (130°F). DME/DME RNP-0.3 NA. When local altimeter setting not received, use Toledo Express altimeter setting and increase all DA 93 feet and all MDA 100 feet; increase LPV all Cats, LNAV/VNAV all Cats and LNAV Cats C/D visibility 3/8 mile and increase Circling Cat C/D visibility 1/2 mile. Baro-VNAV and VDP NA when using Toledo Express altimeter setting.

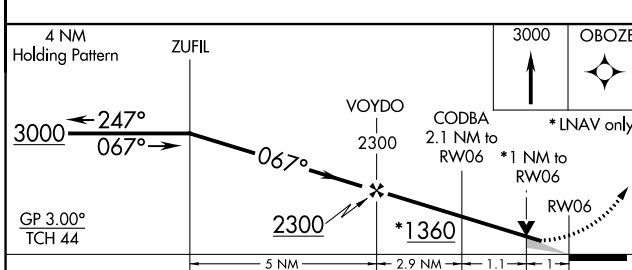
**MISSED APPROACH:**  
Climb to 3000 direct OBOZE and hold.

AWOS-3 <b>119.575</b>	MANSFIELD APP CON★ <b>127.35 390.8 (360°- 180°)</b> TOLEDO APP CON <b>126.1 307.0 (180°-360°)</b>	UNICOM <b>123.05 (CTAF)</b>
--------------------------	--	--------------------------------



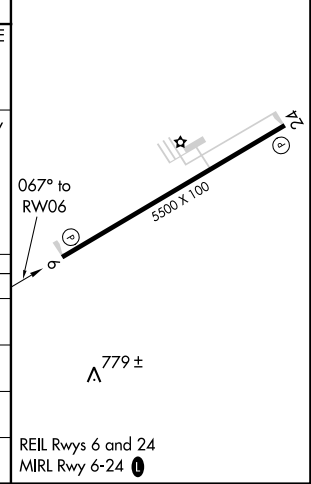
Procedure NA for arrivals at DAZEY on V45-493 northwest bound.

Procedure NA for arrivals at REELS on V92 southeast bound.



ELEV 665	TDZE 665
----------	----------

CATEGORY	A	B	C	D
LPV DA		915-3/4	250 (300-3/4)	
LNAV/VNAV DA		948-7/8	283 (300-7/8)	
LNAV MDA		1040-1	375 (400-1)	
<b>C</b> CIRCLING	1120-1 455 (500-1)	1160-1 495 (500-1)	1380-2 715 (800-2)	1380-2 1/4 715 (800-2 1/4)



EC-2. 01 MAR 2018 to 29 MAR 2018

EC-2. 01 MAR 2018 to 29 MAR 2018