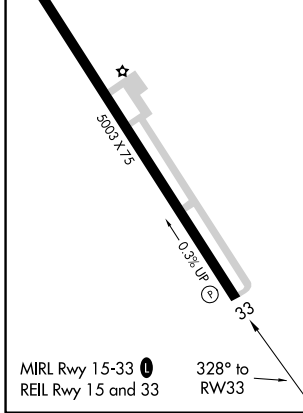
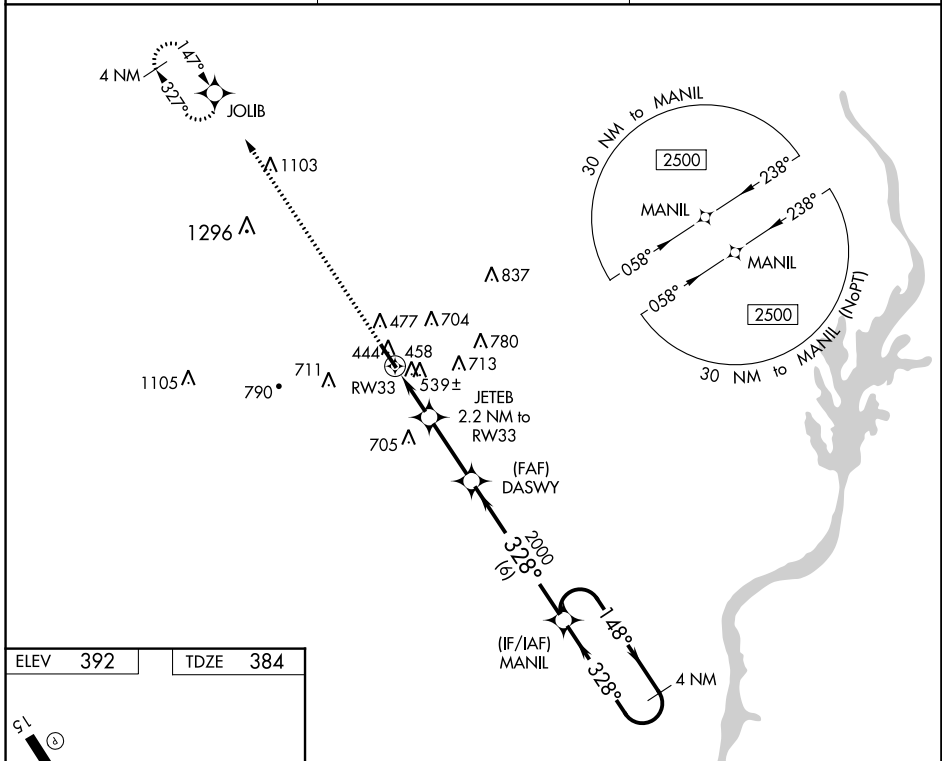


WAAS CH 87134 W33A	APP CRS 328°	Rwy Idg TDZE Apt Elev	5003 384 392
--	------------------------	-----------------------------	---

RNAV (GPS) RWY 33

BOONEVILLE/BALDWIN (8M1)

<p>▼ Baro-VNAV NA. DME/DME RNP-0.3 NA. Use Corinth altimeter setting, when not received, use Tupelo altimeter setting. Helicopter visibility reduction below 3/4 SM NA.</p> <p>▲ NA</p>	<p>MISSED APPROACH: Climb to 2500 direct JOLIB and hold.</p>	
<p>CORINTH AWOS-3 118.675</p>	<p>MEMPHIS CENTER 135.9 273.55</p>	<p>UNICOM 122.8 (CTAF) 0</p>



2500	JOLIB	VGSI and RNAV glidepath not coincident (VGSI Angle 3.00/TCH 40).	MANIL	4 NM Holding Pattern
*LNAV only.		JETEB 2.2 NM to RW33	DASWY 2000	2500
RW33		*1120	2000	GP 3.00° TCH 50
2.2 NM		2.8 NM	6 NM	

CATEGORY	A	B	C	D
LPV DA		688-1	304 (300-1)	
LNAV/VNAV DA		783-1 ³ / ₈	399 (400-1 ³ / ₈)	
LNAV MDA	860-1	476 (500-1)	860-1 ³ / ₈	476 (500-1 ³ / ₈)
CIRCLING	940-1	548 (600-1)	1180-2 ¹ / ₄ 788 (800-2 ¹ / ₄)	1340-3 948 (1000-3)

SC-4, 01 MAR 2018 to 29 MAR 2018

SC-4, 01 MAR 2018 to 29 MAR 2018