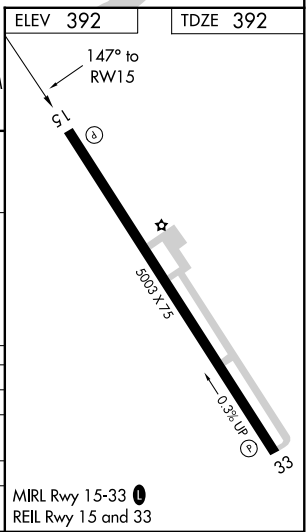
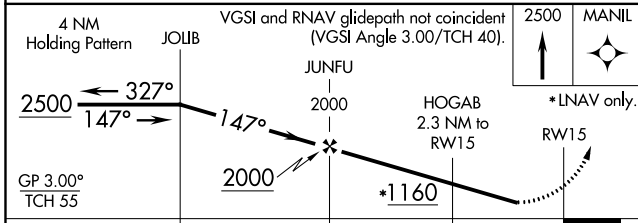
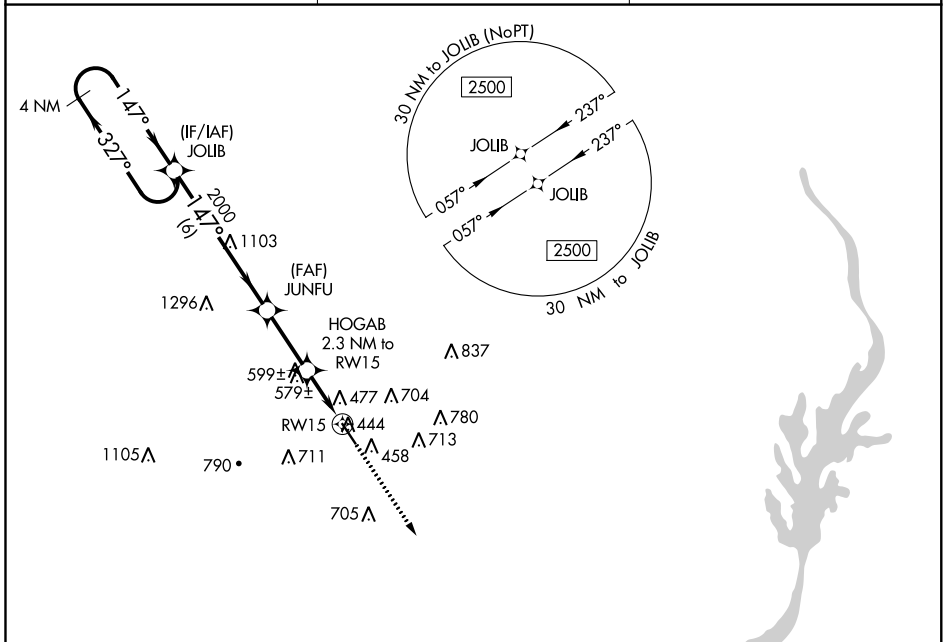


WAAS CH <b>49234</b> W15A	APP CRS <b>147°</b>	Rwy Idg TDZE Apt Elev	<b>5003</b> <b>392</b> <b>392</b>
---------------------------------	------------------------	-----------------------------	---

# RNAV (GPS) RWY 15

BOONEVILLE/BALDWIN (8M1)

<p><b>▼</b> Baro-VNAV NA. DME/DME RNP-0.3 NA. Use Corinth altimeter setting, when not received use Tupelo altimeter setting and increase all DA 4 feet, and all MDA 20 feet. Helicopter visibility reduction below ¼ SM NA.</p> <p><b>▲</b> NA</p>	<p>MISSED APPROACH: Climb to 2500 direct MANIL and hold.</p>	
<p>CORINTH AWOS-3 <b>118.675</b></p>	<p>MEMPHIS CENTER <b>135.9 273.55</b></p>	<p>UNICOM <b>122.8 (CTAF) 0</b></p>



CATEGORY	A	B	C	D
LPV DA	777-1¼ 385 (400-1¼)			
LNAV/VNAV DA	842-1½ 450 (500-1½)			
LNAV MDA	880-1	488 (500-1)	880-1⅓	488 (500-1⅓)
CIRCLING	940-1	548 (600-1)	1180-2¼	1340-3
			788 (800-2¼)	948 (1000-3)

SC-4, 01 MAR 2018 to 29 MAR 2018

SC-4, 01 MAR 2018 to 29 MAR 2018