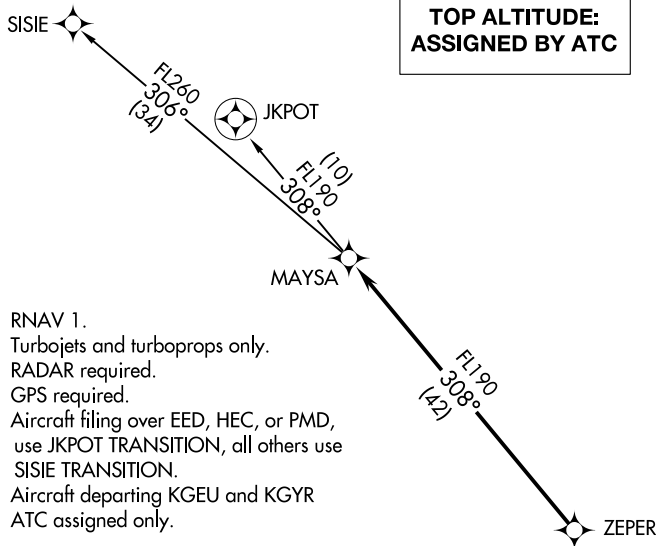


(MAYSA5.MAYSA) 16315

MAYSA FIVE DEPARTURE (RNAV)

SL-6915 (FAA)

GLENDALE MUNI (G^EU)
GLENDALE, ARIZONA



ATIS
 119.425
 GND CON
 118.0
 GLENDALE TOWER *
 121.0
 LUKE DEP CON *
 118.15 363.125
 PHOENIX DEP CON
 120.7 239.0

- NOTE: RNAV 1.
 NOTE: Turbojets and turboprops only.
 NOTE: RADAR required.
 NOTE: GPS required.
 NOTE: Aircraft filing over EED, HEC, or PMD, use JKPOT TRANSITION, all others use SISIE TRANSITION.
 NOTE: Aircraft departing KGEU and KGYR ATC assigned only.

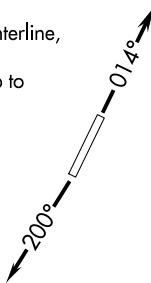
TAKEOFF OBSTACLE NOTES

- Rwy 1: Light on blast fence 4' from DER, 130' left of centerline, up to 10' AGL/1088' MSL.
 Trees beginning 124' from DER, left and right of centerline, up to 30' AGL/1104' MSL.
 Vehicles beginning 299' from DER, 80' right of centerline, up to 15' AGL/1091' MSL.
 Poles and trees beginning 400' from DER, 197' right of centerline, up to 75' AGL/1144' MSL.
- Rwy 19: Trees beginning 281' from DER, 331' left of centerline, up to 33' AGL/1060' MSL.

TAKEOFF MINIMUMS

Rwys 1, 19: Standard.

NOTE: Chart not to scale.



DEPARTURE ROUTE DESCRIPTION

TAKEOFF RUNWAY 1: Climb heading 014° or as assigned by ATC, thence. . . .

TAKEOFF RUNWAY 19: Climb heading 200° or as assigned by ATC, thence. . . .

. . . .expect RADAR vectors to ZEPER, then on track 308° to MAYSA. Then on (transition), expect filed altitude 3 minutes after departure.

JKPOT TRANSITION (MAYSA5.JKPOT)

SISIE TRANSITION (MAYSA5.SISIE)

MAYSA FIVE DEPARTURE (RNAV)
(MAYSA5.MAYSA) 10NOV16

GLENDALE, ARIZONA
GLENDALE MUNI (G^EU)

SW-4, 01 MAR 2018 to 29 MAR 2018

SW-4, 01 MAR 2018 to 29 MAR 2018