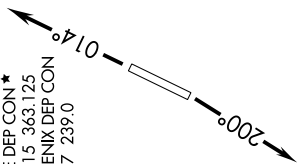


SW-4, 01 MAR 2018 to 29 MAR 2018

**TOP ALTITUDE:  
ASSIGNED BY ATC**

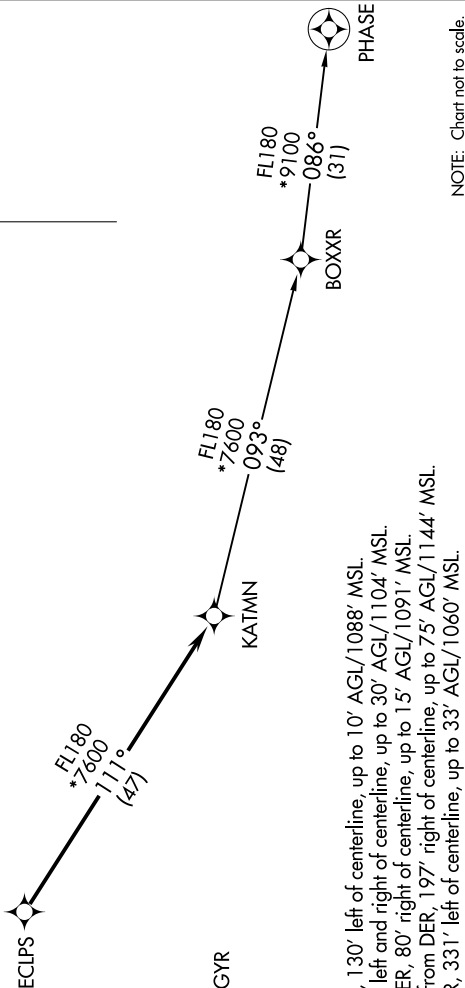
ATIS 119.425  
GND CON 118.0  
GLENDALE TOWER \* 121.0  
LUKE DEP CON \* 118.15 363.125  
PHOENIX DEP CON 120.7 239.0



**DEPARTURE ROUTE DESCRIPTION**

**TAKEOFF RUNWAY 1:** Climb heading 014° or as assigned by ATC, thence. . . .  
**TAKEOFF RUNWAY 19:** Climb heading 200° or as assigned by ATC, thence. . . .  
. . . . expect RADAR vectors to ECLPS, then on track 111° to KATMN. Then on (transition), expect filed altitude 3 minutes after departure.  
**PHASE TRANSITION (KATMN5.PHASE)**

**TAKEOFF MINIMUMS**  
Rwys 1, 19: Standard.



- NOTE: RNAV 1.
- NOTE: Turbojets and turboprops only.
- NOTE: RADAR required.
- NOTE: GPS required.
- NOTE: Aircraft departing KGEU and KGYR ATC assigned only.

**TAKEOFF OBSTACLE NOTES**

Rwy 1: Light on blast fence 4' from DER, 130' left of centerline, up to 10' AGL/1088' MSL.  
Trees beginning 124' from DER, left and right of centerline, up to 30' AGL/1104' MSL.  
Vehicles beginning 299' from DER, 80' right of centerline, up to 15' AGL/1091' MSL.  
Poles and trees beginning 400' from DER, 197' right of centerline, up to 75' AGL/1144' MSL.  
Rwy 19: Trees beginning 281' from DER, 331' left of centerline, up to 33' AGL/1060' MSL.

NOTE: Chart not to scale.

SW-4, 01 MAR 2018 to 29 MAR 2018